



more than a place, it's home.

**NORWOOD YOUNG AMERICA ECONOMIC DEVELOPMENT COMMISSION**

Wednesday, June 14, 2023 - 6:00pm

City Hall Council Chambers, 310 Elm Street West

**AGENDA**

1. Call to Order
  - A. Pledge of Allegiance
2. Adoption of Agenda
3. Approve Minutes
  - A. May 10, 2023, EDC meeting
4. Introductions, Presentations, and Public Comment

(Citizens may address the Economic Development Commission about any non-agenda item of concern. Speakers must state their name, address, and limit their remarks to three minutes. The Economic Development Commission will take no official action on these items but may refer the matter to staff for a future report or direct that the matter be scheduled for a future meeting.)
5. New Business
  - A. NYA Business Dashboard
  - B. Yellowstone Trail – Cultural Heritage Tourism Master Plan
  - C. Carver County Workforce Development/Economic Development Partnership
6. Old Business/Update
  - A. Housing Study Update
  - B. Façade Program
  - C. Central Trades & Advisory Group Update
  - D. Chamber of Commerce Update
7. City Council & Other Commission Updates
8. Upcoming Meetings - Next EDC meeting – 6:00 p.m., June 14, 2023
9. Adjournment

June 15, 2023	Sr. Advisory	9:00 AM
June 20, 2023	Park and Recreation Commission Meeting	5:15 PM
June 26, 2023	City Council Workshop/EDA/Meeting	5:00 PM/6:00 PM
July 5, 2023	Planning and Zoning Commission Meeting	6:00 PM (Please note the day change due to the holiday)
July 12, 2023	NYA Food Distribution	12:30 PM to 1:30 PM
July 10, 2023	City Council Meeting	6:00 PM
July 12 <sup>th</sup> , 2023	Economic Development Commission Meeting	6:00 PM
July 18, 2023	Park and Recreation Commission Meeting	5:15 PM
July 20, 2023	Sr. Advisory	9:00 AM
July 24, 2023	City Council Workshop/EDA/Meeting	5:00 PM/6:00 PM

# NORWOOD YOUNG AMERICA ECONOMIC DEVELOPMENT COMMISSION

Wednesday, May 10, 2023 - 6:00pm

City Hall Council Chambers, 310 Elm Street West

## Minutes

In Attendance: Carol Lagergren, Jason Winter, Connor Smith, Mike Eggers, Mike McPadden

Absent: Kayla Dammann, Andrea Gerth

Staff: CEDD Karen Hallquist

Guest: none

### **1. Call to Order**

Vice Chair Smith called the meeting to order at 6:00pm.

A. Pledge of Allegiance

### **2. Adoption of Agenda**

*Motion: JW/ME to approve the agenda with the deletion of the Appointment of Officers. Motion passed 5-0.*

### **3. Appointment of Officers**

### **4. Approve Minutes**

A. April 12, 2023, EDC meeting

*Motion: CL/JW to approve. Motion passed 5-0.*

### **5. Introductions, Presentations, and Public Comment - None**

### **6. New Business**

#### **A. NYA Business Dashboard**

Hallquist shared that Carver Canine is looking to lease the former Countryside Vet building along Hwy 5 and sent a letter of support for that location. Copper Canyon should be opening in June – ribbon cutting to follow.

### **7. Old Business/Update**

#### **7.A Small Business Seminar – May 3, 2023**

Commissioners gave the following feedback:

- Low participation (22), however, definitely do the event again – the presentation was great and the business panelists gave great information. Excellent content.
- Advertising should go out earlier. Include other cities/commissions to attend in Waconia and Cologne. Use a personal invitation as another format for advertising.
- Next year consider having OrangeBall Creative come to talk about branding/marketing (they did the city's branding). Have NextStage do their presentation every other year.

#### **7.B Housing Study Update**

Hallquist shared that the NYA City Council approved the proposal submitted by WSB in the amount of \$15,000 at the April 24, 2023, meeting. Staff has confirmed with WSB, and a contract will be provided to sign to start the process. The timeline for completion is August 2023. Staff will be applying to the Carver County CDA Community Growth Initiative Pre-Development Grant Program in the amount of \$7,500.

#### **7.E Central Trades & Advisory Group**

Hallquist shared that she and Commissioner Eggers attended the Hutchinson Workforce Conference "Out of the Box & Into the Movement Education and Business: Working Together" on Friday, April 28<sup>th</sup> at Hutchinson High School. The conference centered around schools/cities/manufacturers making connections to bring real world jobs to students. The workforce needs can be solved by collaborating with schools to expose students to career opportunities from as young of an age as 5<sup>th</sup> grade.

#### **7.D Façade Program**

Commissioners reviewed the rough draft for the façade loan program. Details included a 1-1 match up to \$5,000 of a no-interest loan to be paid back within 18 months of the completion of the project.

Commissioner Winters will review the guidelines and application. It was noted that the paid invoice from the contractor must be submitted to get the loan.

## **7.EChamber of Commerce Update**

Hallquist shared the following chamber events:

- May 19<sup>th</sup> is the chamber golf tourney in Glencoe.
- June 3<sup>rd</sup> is Springfest on Historic Downtown Norwood
- No Taste of NYA this year.

## **8. City Council & Other Commission Updates**

ME: Planning Commission updates:

- Reviewing industrial park zoning.
- Timon Dammann is filling the open commission seat.

CL/MM: Council updates:

- Old Town update.
- Lifeguards are hired for the summer.
- RFP sent out to new management companies for the Harbor/Haven. Ecumen cancelled their contracts with cities and counties.

## **9. Upcoming Meetings - Next EDC meeting – 6:00 pm, June 14, 2023**

## **10. Adjournment**

*Motion: ME/MM to adjourn at 6:55pm. Motion passed 5-0.*

Respectfully submitted,

---

Karen Hallquist, Community & Economic Development Director



TO: Economic Development Commission

FROM: Karen Hallquist, Community & Economic Development Director

DATE: June 14, 2023

SUBJECT: NYA Business Dashboard

Business Development	Location	Status
Carver Canine	13950 Hwy 5	TBD
KJS Laundromat	219 Elm St E	Ribbon cutting TBD??
Copper Canyon Bar & Grill	425 Merger St	Tentative ribbon cutting July 12 9:30am
Children of Tomorrow	316 Hwy 212	Expansion
Business Inquiries		
PuroClean	RC-1	Potential for expansion
Mini Storage	B-1 Business Industrial	Interested in city-owned greenspace
Mfg	I-1 Light Industrial	Interested in 2 <sup>nd</sup> Ind Park
Incubator Facility	I-1 Light Industrial	Interested in 2 <sup>nd</sup> Ind Park
Mfg – waterbased solutions	I-1 Light Industrial	Submitted LOI
Mfg Expansion	I-1	Researching options for 2 <sup>nd</sup> Ind Park
Mfg	I-1 Light Industrial	Submitted LOI
Mfg	B-1/I-1	Interested in 2 <sup>nd</sup> Ind Park
Mfg	I-1 Light Industrial	Interested in 2 <sup>nd</sup> Ind Park
Indoor storage	B-1/I-1 Business Industrial	Interested in 2 <sup>nd</sup> Ind Park
Insurance Agency		Working with owner for location
Market Rate apartments	C-3 Downtown District	Conversation w developer
Retail/food shop	C-3 Downtown District	TBD
Construction company	I-1 Light Industrial	Interested in 2 <sup>nd</sup> Ind Park
Landscaping company	B-1 Business Industrial	Interested in city-owned greenspace .
Auto repair	RC-1	Expansion possibilities
Retail/food shop	C-2 General Commercial	Researching location
Housing Development Opportunities		
Kloth Property	16810 CR 31	61.32 acres of R-1 Residential – listed for \$1.6M - single family land available
Preserve/Meadow Property	N 700 block of Lakewood Trl	22.66 acres listed for \$1.2M
JAM Property	NE Corner of Tacoma/Hwy 212	60.69 acres of Transitional Ag land – for sale again
Wenlund Property	13620 CR 33 (south of NYA)	80+ acre parcel - inquiries
Emma Street Lots (7)	Emma Street, NYA	Two (2) lots for sale \$50k ea – one is pending.
Misc Projects		
All-park assessment	All nine parks	Public service staff working on suggested improvements
City Hall Raingardens & Garden Plots		CHS to start in Fall 2023
Hwy 212 Four Lane Expansion		Design meeting happening – set to start later 2024

Outlot A Plans/public water access	Outlot A & Lakewood Trl & Barnes Lake	Reaching out to DNR and CCWMO
Walking Track	Central Schools	Work Session at City Council Mtg on June 12 <sup>th</sup> at 5pm
Old Town	Willkommen Memorial Park	Work Session at City Council Mtg on June 26 <sup>th</sup> at 5pm
Industrial Park Expansion		Feasibility study going on for infrastructure costs
Masonic Building	10 3 <sup>rd</sup> Ave SE	City Council to start razing process
Central Schools Project	Elem & HS	Permits processed

#### Commercial Land for Sale

- [312 1st Street NE](#) -Rezoned C-3 Downtown District
- [Metro West Industrial Park](#) -frontage along US Highway 212 with vehicle access available off of Railroad Street. There are four lots remaining in this development, ranging in size from 1.28 – 2.52 acres.
- 420 W Railroad Street – bare lot w drainage ditch, no water/sewer access
- Industrial Blvd City-Owned Greenspace

#### Commercial Buildings for Sale or Lease

- [522 Faxon Road](#) – Timm Law office w/additional office space for lease
- 209 Main Street E – former meat market for lease
- 232 Main Street E – former Clark building
- 310 W Hwy 212 – whole building/s for sale
- 319 W Elm Street – former bakery building – office/retail/rental dwelling - for sale or lease

#### Residential Land for Sale

- [16810 CR 31](#)
- [7xx Lakewood Trail](#)
- [13620 CR 33](#) – south of NYA (not annexed)



TO: Economic Development Commission

FROM: Karen Hallquist, Community & Economic Development Director

DATE: June 14, 2023

SUBJECT: Yellowstone Trail – Cultural Heritage Tourism Master Plan

---

The Yellowstone Trail of Minnesota (YTMN) offered a presentation in Glencoe, MN on Wed, May 24, 2023, to talk about their Master Plan which formalizes tourism efforts for the communities along the Yellowstone Trail from Ortonville to the St. Croix River. The plan was implemented in August 2022, with the goal of total collaboration in June 2027.

Interestingly enough, Norwood Young America sits on the edge of two defined locations of the Yellowstone Trail; “Prairie Farm Towns” from Granite Falls to Norwood Young America (along Hwy 212), and “Edge of the Big Woods” from Norwood Young America to Excelsior (from the intersection of Hwy 5 and 212). The Master Plan shares ultimate efforts of the following to those touring the Yellowstone Trail:

- Passport programs/collecting wooden nickels,
- Museums/guide maps (which Willkommen Heritage & Preservation Society has)
- Website and mobile app
- Online newsletter
- Themed exhibits along the trail at 5-7 locations

Staff contacted YTMN to share the “Willkommen to Norwood Young America” packet, plus shared a few tourist attractions and links:

- Stiftungsfest – MN Oldest Consecutive Celebration
- Baylor Regional Park
- Willkommen Heritage & Preservation Society
- Ballfields – Zellmann Field & Willkommen Memorial Park
- Bongards Creameries Retail Store

While there is no monetary investment requested by the organization, staff will remain in contact with YTMN to assure that current and accurate information about NYA is provided for their efforts as the potential for economic benefits for the NYA community are inevitable.

Information Only.

**Norwood Young America**



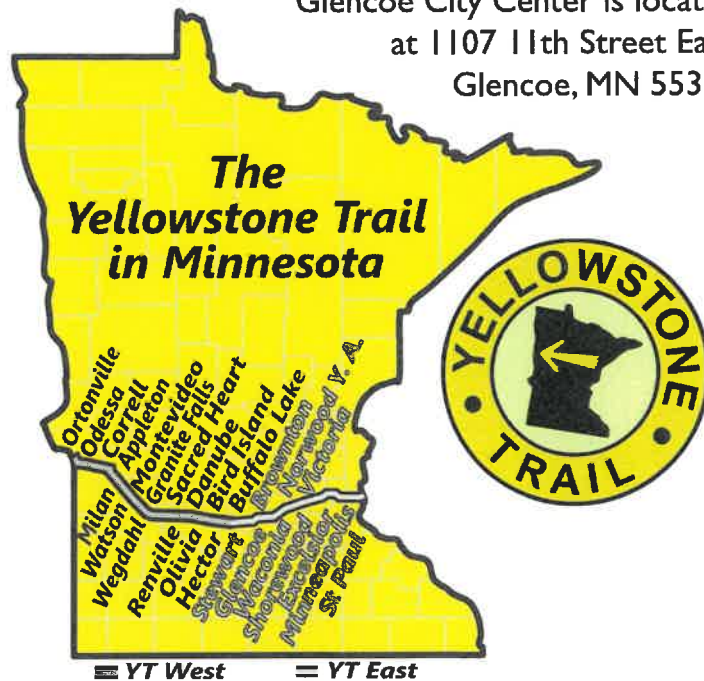
**\*SAVE THE DATE\***

# **YELLOWSTONE TRAIL MASTER PLAN KICK-OFF**

**Calling all Highway 212 community leaders of history,  
culture, arts and economic development**

**WEDNESDAY, MAY 24**  
**2:00 - 4:00 P.M.**  
**GLENCOE CITY CENTER**

Glencoe City Center is located  
at 1107 11th Street East,  
Glencoe, MN 55336



Join Museum Consultant  
and Master Plan developer  
Jim Roe discuss how to  
make the Yellowstone Trail  
brand viable today

**Questions:** contact  
Scott at 541-543-9975





**Greetings!**

**April 26, 2023**

The Yellowstone Trail of Minnesota (YTMN) would like to invite leaders of history, culture, arts, community and economic development to join us in revitalizing the Yellowstone Trail brand to the benefit of all Yellowstone Trail communities.

YTMN held its first meeting in Granite Falls in 2018, bringing together leaders from eight communities running from Buffalo Lake to Granite Falls. By 2020 the organization had integrated all communities in the western half of the state, from Buffalo Lake to Ortonville. In 2021, YTMN was successful in its pursuit of a Minnesota Historical Society Partnership grant, which was used to fund the development of a Yellowstone Trail Cultural Heritage Tourism Master Plan. Over the past two years, the organization has been developing the document with YTMN members across the state alongside consultant Jim Roe.

The Yellowstone Trail Master Plan presents the history of the Yellowstone Trail while also laying the groundwork for future organizational efforts with a guiding source document. The Master Plan was presented to western Minnesota communities this past winter and is now set to be rolled out before eastern Minnesota communities during a presentation that will be held Wednesday, May 24 at the Glencoe City Center.

**You are invited:**

**YELLOWSTONE TRAIL MASTER PLAN PRESENTATION**

Wednesday, May 24 from 2 to 4 p.m.

Glencoe City Hall, 1107 11th St E, Glencoe, MN 55336

Presented by Jim Roe

**\*Livestream to be made available\***

It is our hope that those in attendance will become informed on the past and potential of the Yellowstone Trail brand legacy, and that they will be inspired to join in the effort and/or help spread the word. Links to a livestream of the event will be made available, but we encourage individuals to be present in person to allow for face-to-face introductions.

In addition to this email and letter, individuals will find a copy of the full Yellowstone Trail Master Plan and one page Master Plan presentation event flyer attached. Please don't hesitate to pass this information to any individuals or organizations you believe would be interested in this effort. Additionally, feel free to share potential contacts with us.

**Thank you,**

Scott Tedrick  
President, Yellowstone Trail of Minnesota  
Email: YTofMN@gmail.com  
Cell: 541-543-9975





TO: Economic Development Commission

FROM: Karen Hallquist, Community & Economic Development Director

DATE: June 14, 2023

SUBJECT: Carver County Workforce Development/Economic Development Partnership

---

Staff has been attending the Carver County Workforce Development/Economic Development Partnership meetings starting back in January 2023. This group took a hiatus during the pandemic and started back up again in 2022 with their first event in September at the MN Landscape Arboretum. Members of this group include community development and economic development directors from all Carver County municipalities, Carver County Workforce representative, Hennepin/Carver Workforce Board Director, Carver Co CDA C&E Director, Carver Co Health & Human Services Director, Carver County Planner (township rep), and Commissioner Matt Udermann. The purpose of the meetings is to connect/network with other communities to address workforce needs and growth in Carver County.

The event in September was hosted by the Greater MSP Board. The content focused on economic development of Carver County, specifically manufacturing and housing development. Mayor Lagergren was present for the tour of Carver County and shared information on the industrial park expansion and the benefits that the Hwy 212 four-lane expansion will bring to NYA.

After attending the NYA Manufacturing Today event in October 2022, Commissioner Uderman has a goal to replicate the event in eastern Carver County. Staff provided the CCWD/ED group with the history of the NYA's commitment to recognizing Manufacturing Month each year along with the details of how NYA Manufacturing Today came to be. The CCWD/ED agreed at their last meeting to all attend this year's NYA Manufacturing Today event in October 2023. Staff will arrange for the city bus to tour the group.

Attached is a copy of the memo provided to the CCWD/ED about NYA Manufacturing Today along with two presentations on Carver County Population & Labor Market that were prepared by Tim O'Neill – Twin Cities Labor Market Analyst with DEED.

Discussion Only.



TO: Workforce Development/Economic Development Partnership

FROM: Karen Hallquist, Community & Economic Development Director

DATE: Friday, April 7, 2023

SUBJECT: "NYA Manufacturing Today" Event

---

The Norwood Young America Economic Development Commission, in partnership with the NYA Area Chamber of Commerce, has hosted an annual Manufacturer's Day event over the last fifteen years. The events have featured one local manufacturer (at their location) and inviting all other local manufacturers, City Council, EDC Commissioners, and Chamber members to attend. The participants were given a tour of the featured manufacturer, provided lunch by the EDC/Chamber, given a presentation by the manufacturer, followed by the reading of a Manufacturing Month Proclamation by the mayor.

In 2020, the NYA EDC/Chamber was not able to hold the standard event, however, still wanted to recognize the manufacturers during Manufacturing Month plus acknowledge their work successes during the pandemic. The EDC/Chamber dropped off boxed lunches to all the manufacturers within NYA and presented a framed Certificate of Acknowledgement for Manufacturing Month.

In 2021 and 2022, the Norwood Young America Economic Development Commission, along with the Central Trades & Advisory Group, hosted the "NYA Manufacturing Today" event during Manufacturing Week in October. The Central Trades & Advisory Group started in 2021 and includes representatives from Central Public Schools, NYA EDC, NYA Area Chamber of Commerce, and local NYA manufacturers. The efforts of this group are to encourage students to discover the opportunities and successes of the trades and manufacturing businesses in the area. By revamping the standard event to "NYA Manufacturing Today," it made the primary intention of the event to expose future workforce to well-paying jobs opportunities and careers in the NYA area, while still acknowledging the manufacturing industry for Manufacturing Month.

Both years, the event has included tours to multiple local manufacturers plus a presentation by Central Public School Superintendent Tim Schochenmaier. In his presentation, Mr. Schochenmaier shared information on Central Public School's "On the Job Training" and "My First Job" programs. Both programs are amazing opportunities for all parties involved – gaining school credits, earning a wage, exposing students to the latest – greatest manufacturing

technology and equipment, growing relationships with a potential employer, and bringing much needed workforce to our local manufacturers. Also emphasized was the fact that students do not need a four-year degree for local manufacturing careers, rather attendance at a trade school or 2-year school that could be paid for by their employer. Last year's event was a huge success with about 70 students and a dozen community members and elected officials who participated.

#### Event Follow Up

- Each student was asked to fill out a survey about the event (survey attached). Results of the survey were provided to the CTA group for discussion and used by industrial tech teachers to further conversations in class about manufacturing opportunities (results attached).
- Students were provided with information sheets with all local NYA manufacturing businesses and their primary industry. They were also given a "Did you know..." sheet about manufacturing careers in MN (both attached).
- Central Schools has hosted a Career Fair in the last two years following the Manufacturing event. All the manufacturers involved with the tours were present along with additional manufacturers and other community businesses such as the nursing home, fire department, landscaping companies, Carver Co Sheriff Department, financial advisor, and City. All businesses had employment applications (and free swag) to take.
- Details of the NYA Manufacturing Today event was publicized in the Central Public Schools monthly email newsletter that is sent out to all parents, on Raider Recap (YouTube channel show for Central Raiders Streaming), the City of NYA monthly newsletter, local News & Times newspaper, and City/Chamber social media outlets.

#### Stakeholders in NYA Manufacturing Today:

- School superintendent
- School principal
- School guidance counselor
- School curriculum director
- School industrial technology teachers
- Local manufacturers
- Community & Economic Development Director
- EDC/EDA
- City Council
- Chamber Director
- Elected Officials
- Students
- Parents
- Community

## Challenges

- Stakeholder support. Without the school's support on multiple levels, this event cannot take place. District 108 has an extremely supportive administration who knows that the manufacturing and trades industry is prevalent in the community. All of the other stakeholders on the above list have molded the NYA Manufacturing Today event success to what it is today.
- Parent buy-in. Given that the NYA area is known for trades and manufacturing and not much for retail/office businesses, parent buy-in is not necessarily a challenge, however, could be in a different community. About a quarter of the NYA population has a bachelor's degree or higher. An additional 30% have an associate degree or some college experience but no degree, yet the median household income for the area is approximately \$80,000.
- Scheduling. Our biggest challenge...timing and efficiency. All parties needed to make sure the most effective information is shared in a limited amount of time. The scheduling aspect of the event started with the school to make sure all teachers were aware of the event, parent communication, busing service, etc. Manufacturers had to organize tours at convenient times during their normal daily production. And lunch logistics had to be timely to accommodate the presentation and one afternoon tour.

## Results

- The CTA group will be meeting in May 2023 to share the total number of students who were able to connect with manufacturers for summer jobs or internships. I personally know of six students (two of which are females) that will be working at local manufacturers this summer. One of the female students is taking welding classes that will be paid for in full through the Pipeline program.
- Manufacturers from outside of the community have asked to join the CTA group.
- Because of the success of the event, the school will be reaching out to additional businesses such as electricians, plumbers, autobody mechanics, and service technicians in the area. They are also working with a local implement dealer and excavation company to create a large "sandbox" for students to learn to use a bobcat and other equipment.

## Attachments

- October 11, 2022 City Council Memo: 2022 Mfg Month Proclamation
- NYA Manufacturing Today flyer
- Did you know...flyer
- Thank you to NYA Manufacturers list
- NYA Manufacturing Today Student Survey 2022
- Student Survey Results
- October 2022 City of NYA Newsletter article NYA Manufacturing Today
- LMC May/June 2022 article (submitted from October 2021 NYA Manufacturing Today event)

# mn EMPLOYMENT AND ECONOMIC DEVELOPMENT

## Carver County Population & Labor Market Statistics

Timothy O'Neill – Twin Cities Labor Market Analyst  
Labor Market Information Office (<http://mn.gov/deed/data>)

1

## Meet the LMI Office [mn.gov/deed/data](http://mn.gov/deed/data)



**Angelina Nguyen**  
LMI Director  
[angelina.nguyen@state.mn.us](mailto:angelina.nguyen@state.mn.us)



**Oriane Casale**  
Assistant LMI Director  
[oriane.casale@state.mn.us](mailto:oriane.casale@state.mn.us)



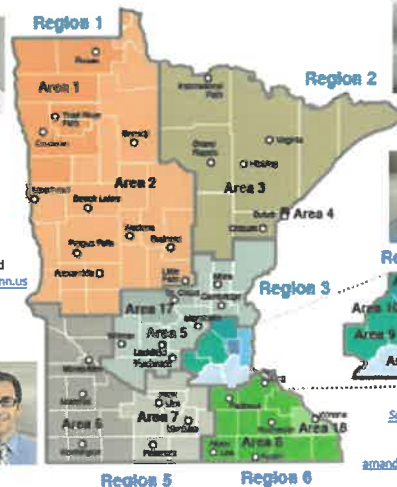
**Alessia Leibert**  
Research Project Manager  
[alessia.leibert@state.mn.us](mailto:alessia.leibert@state.mn.us)

**Anthony Schaffhauser**  
*Northwest*  
Area 2 & 2  
CareerForce Bemidji  
[anthony.schaffhauser@state.mn.us](mailto:anthony.schaffhauser@state.mn.us)  
320-441-6594



**Luke Greiner**  
*Central & Southwest*  
Area 5, 6 & 17  
CareerForce St. Cloud  
[luke.greiner@state.mn.us](mailto:luke.greiner@state.mn.us)  
320-223-6992

**Cameron Macht**  
*Regional Analysis & Outreach Unit Manager*  
CareerForce Willmar  
[cameron.macht@state.mn.us](mailto:cameron.macht@state.mn.us)  
320-441-6596



**Carson Gorecki**  
*Northeast*  
Area 3 & 4  
CareerForce Duluth  
[carson.gorecki@state.mn.us](mailto:carson.gorecki@state.mn.us)  
218-302-8413



**Tim O'Neill**  
*Twin Cities*  
Area 9, 10, 12, 14, 15 & 16  
DEED Headquarters – St. Paul  
[timothy.oneill@state.mn.us](mailto:timothy.oneill@state.mn.us)  
651-259-7401



**Amanda O'Connell**  
*Southeast & South Central*  
Area 7, 8 & 18  
CareerForce Rochester  
[amanda.oconnell@state.mn.us](mailto:amanda.oconnell@state.mn.us)  
320-441-6571



2

## Carver County poverty status

Poverty Status in the past 12 months by Race or Origin, 2021 (total population for whom poverty status is determined)	Total Population	Income below the poverty level	Poverty Rate (% below poverty level)	Minnesota Poverty Rate
White Alone	93,872	3,377	3.6%	7.1%
Black or African American Alone	1,671	308	18.4%	25.0%
American Indian Alone	194	15	7.7%	31.2%
Asian Alone	3,294	96	2.9%	12.2%
Some Other Race Alone	1,163	1	0.1%	16.1%
Two or More Races	4,414	168	3.8%	13.4%
Hispanic or Latino	4,488	79	1.8%	16.4%
<b>Total Population</b>	<b>104,619</b>	<b>3,973</b>	<b>3.8%</b>	<b>9.2%</b>

3

## Carver County poverty status

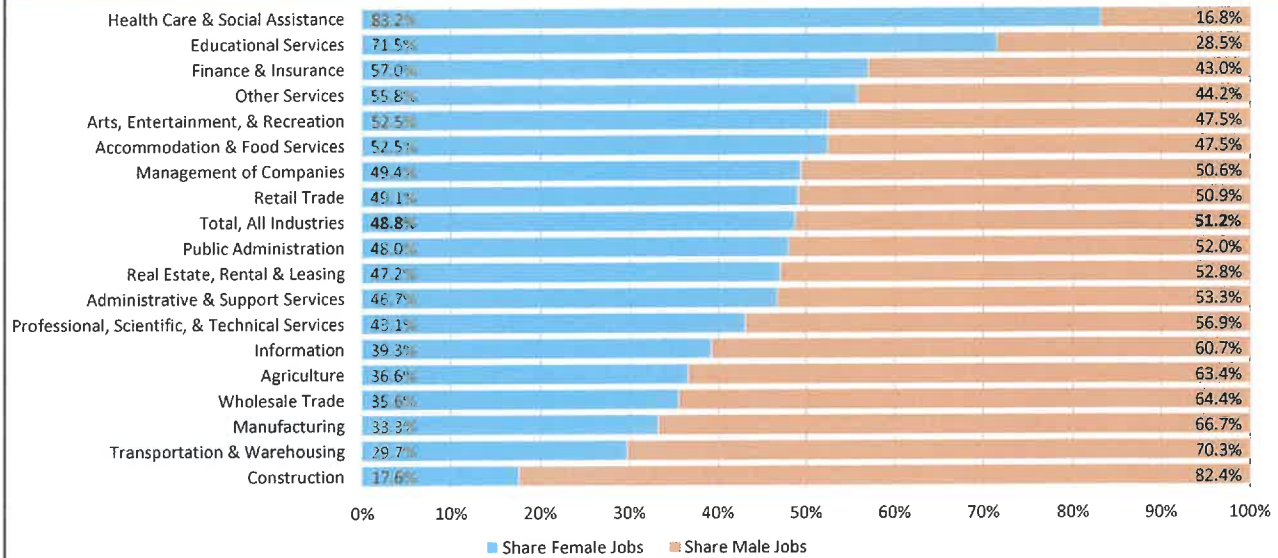
Poverty Status in the past 12 months by Race or Origin, 2021 (total population for whom poverty status is determined)	Total Population	Income below the poverty level	Poverty Rate (% below poverty level)	Minnesota Poverty Rate
<b>Total Population</b>	<b>104,619</b>	<b>3,973</b>	<b>3.8%</b>	<b>9.2%</b>
<b>Population 25 years and over</b>	<b>68,969</b>	<b>2,262</b>	<b>3.3%</b>	<b>7.4%</b>
Less than high school graduate	2,586	281	10.9%	22.9%
High school graduate or equivalent	12,286	718	5.8%	10.8%
Some college or Associate Degree	19,755	793	4.0%	7.2%
Bachelor's degree	34,342	470	1.4%	3.0%
<b>Employed (16 years and over)</b>	<b>57,653</b>	<b>863</b>	<b>1.5%</b>	<b>4.7%</b>
<b>Unemployed (16 years and over)</b>	<b>1,799</b>	<b>245</b>	<b>13.6%</b>	<b>24.2%</b>

4



## Carver County female workforce statistics

### Quarterly Workforce Indicators – Q2 2022 (beginning of quarter)



5

## Carver County female workforce statistics

### Quarterly Workforce Indicators – Q2 2022 (beginning of quarter)

Industry	Total Jobs	Share Female Jobs	Male Avg. Annual Earnings	Female Avg. Annual Earnings	Female Earnings Share of Male Earnings
<b>Total, All Industries</b>	<b>36,762</b>	<b>48.8%</b>	<b>\$75,060</b>	<b>\$48,720</b>	<b>64.9%</b>
Manufacturing	8,008	33.3%	\$82,248	\$66,276	80.6%
Educational Services	4,575	71.5%	\$52,428	\$45,516	86.8%
Health Care & Social Assistance	3,799	83.2%	\$106,536	\$46,548	43.7%
Retail Trade	2,953	49.1%	\$33,972	\$25,404	74.8%
Accommodation & Food Services	2,762	52.5%	\$21,072	\$18,300	86.8%
Construction	2,735	17.6%	\$77,028	\$65,640	85.2%
Wholesale Trade	2,238	35.6%	\$109,572	\$69,456	63.4%
Professional, Scientific, & Technical Services	1,945	43.1%	\$82,140	\$62,484	76.1%
Public Administration	1,451	48.0%	\$62,328	\$62,040	99.5%
Administrative & Support Services	1,198	46.7%	\$65,532	\$65,928	100.6%
Arts, Entertainment, & Recreation	1,121	52.5%	\$37,188	\$24,528	66.0%
Other Services	1,034	55.8%	\$45,048	\$27,288	60.6%
Management of Companies	1,010	49.4%	\$264,192	\$78,960	29.9%
Finance & Insurance	803	57.0%	\$105,480	\$66,144	62.7%
Real Estate, Rental & Leasing	386	47.2%	\$58,992	\$44,736	75.8%
Transportation & Warehousing	323	29.7%	\$44,184	\$40,668	92.0%
Information	275	39.3%	\$134,004	\$70,044	52.3%
Agriculture	131	36.6%	\$41,640	\$21,096	50.7%

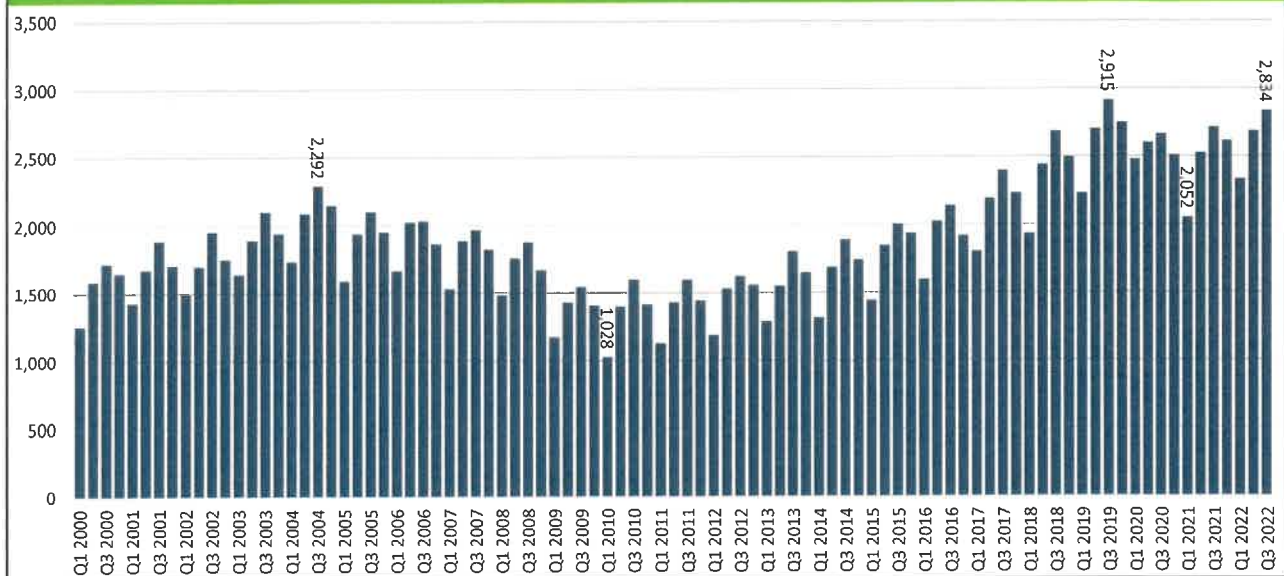
6

## Carver County Construction statistics

Industry	Number of Jobs	Share of Total Jobs	Location Quotient	Number of Establishments	Avg. Annual Wage	Q3 2019 to Q3 2021 Job Change	
						Numeric	Percent
<b>Total, All Industries</b>	<b>41,046</b>	<b>100.0%</b>	<b>-</b>	<b>2,782</b>	<b>\$65,156</b>	<b>+40</b>	<b>+0.1%</b>
<b>Construction</b>	<b>2,834</b>	<b>6.9%</b>	<b>1.3</b>	<b>355</b>	<b>\$83,304</b>	<b>-81</b>	<b>-2.8%</b>
Specialty Trade Contractors	1,906	67.3%	1.4	250	\$80,756	+66	+3.6%
Construction of Buildings	600	21.2%	1.3	92	\$83,148	-29	-4.6%
Heavy & Civil Engineering Construction	328	11.6%	0.8	13	\$98,280	-117	-26.3%

7

## Carver County Construction trends



8

## Carver County student enrollment

MN Dept. of Education

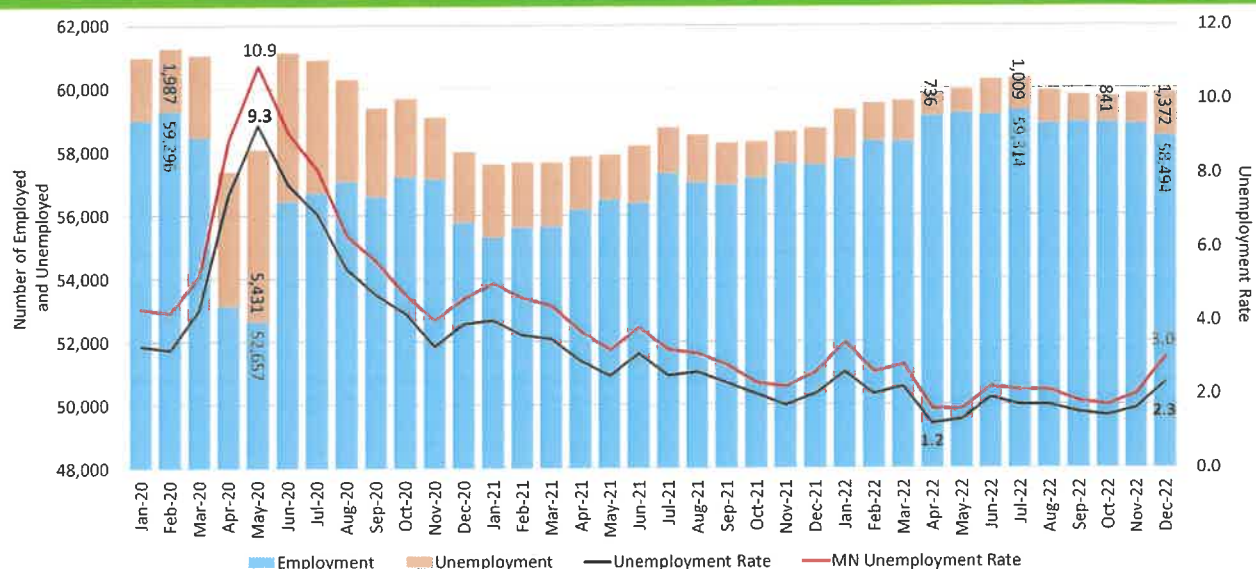
Minnesota Dept. of Education Public School Student Enrollment Data, 2021-2022

	Carver County					State of Minnesota		
	Total Students 2021-2022	2012-2022 Percent Change, Total	Minority Students 2021-2022	Percent Minority 2021-2022	2012-2022 Percent Change, Minority	Total Students 2021-2022	Minority Students	Percent Minority
Kindergarten	1,218	8.7%	229	18.8%	52.7%	62,633	23,932	38.2%
1st Grade	1,185	-1.4%	244	20.6%	50.6%	60,424	23,448	38.8%
2nd Grade	1,244	0.9%	230	18.5%	52.3%	62,501	23,897	38.2%
3rd Grade	1,219	4.7%	234	19.2%	57.0%	62,205	23,800	38.3%
4th Grade	1,275	5.0%	248	19.5%	65.3%	62,475	23,554	37.7%
5th Grade	1,232	-2.1%	229	18.6%	34.7%	62,251	23,066	37.1%
6th Grade	1,723	42.8%	374	21.7%	165.2%	63,687	23,602	37.1%
7th Grade	1,659	36.0%	306	18.4%	100.0%	65,464	24,261	37.1%
8th Grade	1,706	43.4%	327	19.2%	103.1%	67,205	24,484	36.4%
9th Grade	1,327	6.3%	257	19.4%	84.9%	69,583	25,124	36.1%
10th Grade	1,309	8.4%	240	18.3%	73.9%	68,422	23,902	34.9%
11th Grade	1,350	12.1%	262	19.4%	89.9%	67,519	23,108	34.2%
12th Grade	1,498	15.3%	295	19.7%	77.7%	74,250	26,292	35.4%
<b>Total Students</b>	<b>17,945</b>	<b>13.8%</b>	<b>3,475</b>	<b>19.4%</b>	<b>76.6%</b>	<b>848,619</b>	<b>312,470</b>	<b>36.8%</b>

9

## Carver County's labor market situation

Local Area Unemployment Statistics (LAUS)



10

## Carver County job postings

January 1, 2023 – March 1, 2023

- **Total Job Postings: 3,560**
- Heavy & Tractor-Trailer Truck Drivers: 331
- Registered Nurses: 236
- Accountants & Auditors: 114
- First-Line Supervisors of Retail Sales Workers: 106
- Stockers & Order Fillers: 99
- Retail Salespersons: 96
- Cashiers: 87
- Hairdressers, Hairstylists, & Cosmetologists: 87
- Maintenance & Repair Workers: 86
- Driver/Sales Workers: 82
- First-Line Supervisors of Transportation & Material Moving Workers: 62
- Light Truck or Delivery Services Drivers: 61
- First-Line Supervisors of Production & Operating Workers: 60
- Production Workers, All Other: 53
- Personal Care Aides: 51
- Customer Service Representatives: 42
- Automotive Service Technicians & Mechanics: 40
- First-Line Supervisors of Office & Administrative Support Workers: 38
- Bookkeeping, Accounting, & Auditing Clerks: 34
- Industrial Engineers: 34

11

## Carver County job postings

Employers accounting for the greatest proportion of current postings

- Hudson Group
- Ridgeview Medical Center
- Eastern Carver County Schools
- UberEATS
- Life Time, Inc.
- US Foods
- The Bernard Group
- Decker Truck Line
- Lyft
- Beckman Coulter
- RR Donnelley
- Carver County
- Target Corporation
- Kwik Trip
- Post Holdings
- Waconia Public Schools
- Walgreens
- Holiday Stations
- Circle K
- Watertown-Mayer Public Schools

12



## Manufacturing businesses in Carver County

- General Mills, Inc.
- Mackenthun's
- Schwan's Food Mfg.
- Clear Choice Water Distillers
- Legendary Baking
- Gedney Foods Co.
- Quali Tech Inc.
- Bongard's Creameries
- Cooper's Foods
- Penrith-Akers Mfg.
- Crystal Catering Inc.
- FMG Foods
- Kerry Sweet Ingredients
- MJ Foods Inc.
- Organic Foods Inc.
- Philosophical Foods Inc.
- T & K Foods Inc.
- Award Baking International
- Edure Brewing Co.
- Medore Brewing Inc.



## Carver County Population & Labor Market Trends

Timothy O'Neill – Twin Cities Labor Market Analyst  
Labor Market Information Office (<http://mn.gov/deed/data>)

1



# WHAT IS DEED?

→ The Minnesota Department of Employment and Economic Development is the state's principal economic development agency. DEED programs promote business recruitment, expansion and retention; international trade; workforce development; and community development.



2



## Labor market information office mn.gov/deed/data

- Each state produces employment and economic statistics in cooperation with the U.S. Department of Labor's Bureau of Labor Statistics
- LMI includes employment statistics, unemployment rates, wages and salaries, job projections and more
- LMI is the foundation for informed, market-responsive planning



**Latest News**  
Minnesota Adds 14,800 Private Sector Jobs in May  
Labor force participation rate increases as more and more Minnesotans head back to work  
For the 4th straight month, Minnesota gained jobs: Minnesota added 14,800 jobs in May, up from a historically low level of 1,000 jobs in April.  
DEED Has Called More than 30,000 Unemployed Minnesotans, Connecting Them with Job Resources and Work Opportunities

3

## Meet the LMI Office mn.gov/deed/data



**Angelina Nguyen**  
LMI Director  
[angelina.nguyen@state.mn.us](mailto:angelina.nguyen@state.mn.us)



**Oriane Casale**  
Assistant LMI Director  
[oriane.casale@state.mn.us](mailto:oriane.casale@state.mn.us)



**Alessia Leibert**  
Research Project Manager  
[alessia.leibert@state.mn.us](mailto:alessia.leibert@state.mn.us)

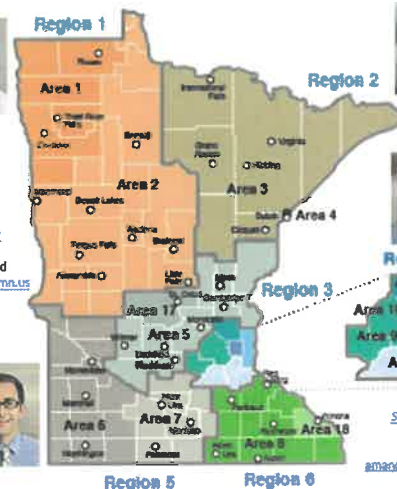
**Anthony Schaffhauser**  
*Northwest*  
Area 1 & 2  
CareerForce Bemidji  
[anthony.schaffhauser@state.mn.us](mailto:anthony.schaffhauser@state.mn.us)  
320-441-6594



**Luke Greiner**  
*Central & Southwest*  
Area 5, 6 & 17  
CareerForce St. Cloud  
[luke.greiner@state.mn.us](mailto:luke.greiner@state.mn.us)  
320-223-6992



**Cameron Macht**  
*Regional Analysis & Outreach Unit Manager*  
CareerForce Willmar  
[cameron.macht@state.mn.us](mailto:cameron.macht@state.mn.us)  
320-441-6596



**Carson Gorecki**  
*Northeast*  
Area 3 & 4  
CareerForce Duluth  
[carson.gorecki@state.mn.us](mailto:carson.gorecki@state.mn.us)  
218-302-8413



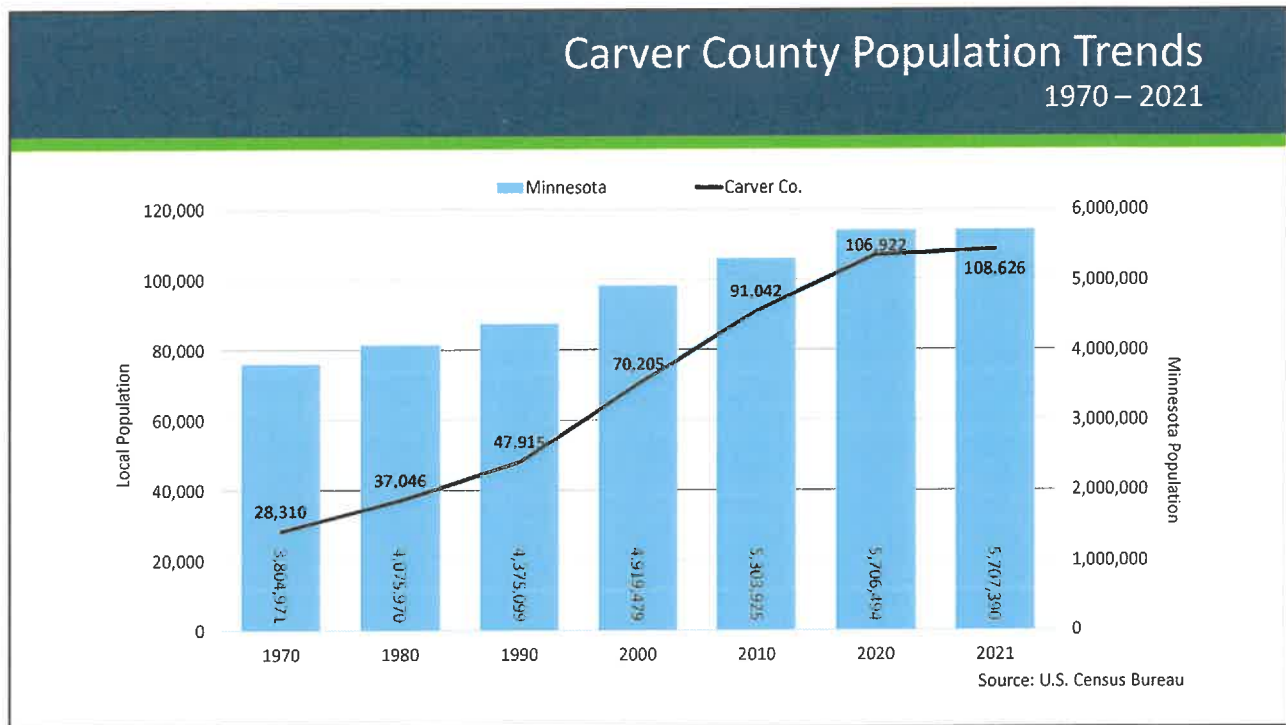
**Tim O'Neill**  
*Twin Cities*  
Area 9, 10, 12, 14, 15 & 16  
DEED Headquarters - St. Paul  
[timothy.oneill@state.mn.us](mailto:timothy.oneill@state.mn.us)  
651-259-7401



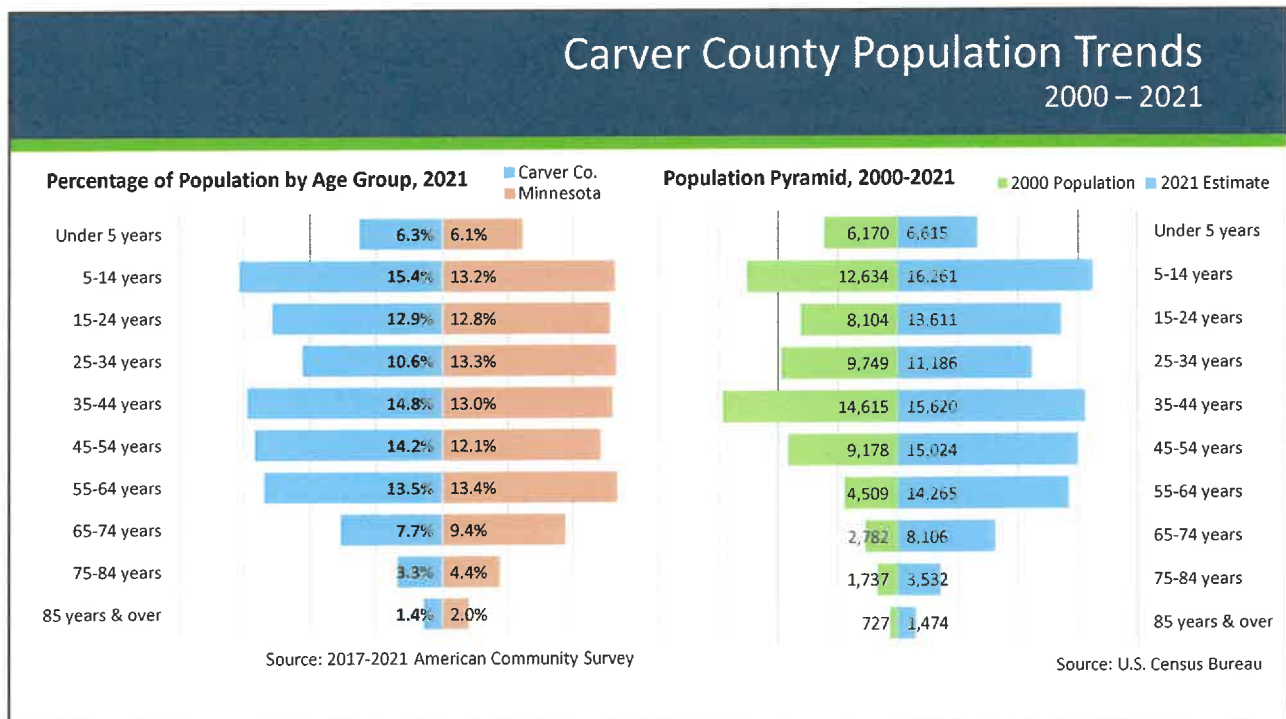
**Amanda O'Connell**  
*Southeast & South Central*  
Area 7, 8 & 18  
CareerForce Rochester  
[amanda.oconnell@state.mn.us](mailto:amanda.oconnell@state.mn.us)  
320-441-6571



4



5



6

## Carver County Population Trends 2011 – 2021

Race and Hispanic Origin, 2021	Carver Co. 2021				Minnesota	
	Number	Percent	Change from 2011-2021 Numeric   Percent		Percent	Change from 2011-2021
<b>Total</b>	<b>105,694</b>	<b>100.0%</b>	<b>+15,630</b>	<b>+17.4%</b>	<b>100.0%</b>	<b>+7.4%</b>
White	94,759	89.7%	+11,300	+13.5%	80.7%	+0.4%
Black or African American	1,731	1.6%	+754	+77.2%	6.6%	+42.2%
American Indian & Alaska Native	210	0.2%	+35	+20.0%	0.9%	-8.0%
Asian & Other Pac. Islander	3,336	3.2%	+939	+39.2%	5.0%	+35.8%
Some Other Race	1,192	1.1%	-451	-27.4%	2.1%	+66.5%
Two or More Races	4,466	4.2%	+3,053	+216.1%	4.6%	+121.8%
Hispanic or Latino origin	4,597	4.3%	+1,133	+32.7%	5.6%	+31.6%

7

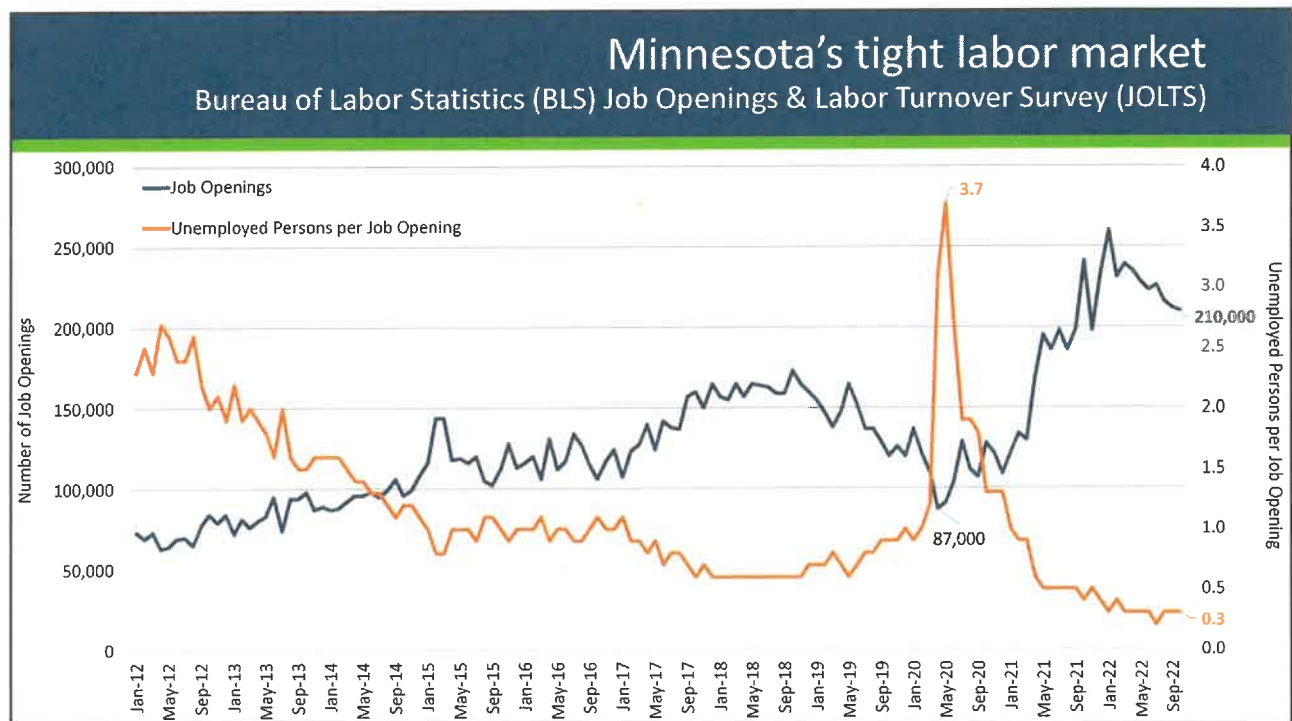
## Carver County Population Projections 2011 – 2021

Carver Co.	Population Projections, 2023-2043			2023-2043 Change	
	2023 Projection	2033 Projection	2043 Projection	Numeric	Percent
Under 5 years	7,294	7,963	8,731	+1,437	+19.7%
5-14 years	16,518	18,703	20,770	+4,252	+25.7%
15-24 years	13,553	13,960	15,810	+2,257	+16.7%
25-34 years	12,026	13,594	13,879	+1,853	+15.4%
35-44 years	16,499	18,416	20,684	+4,185	+25.4%
45-54 years	14,524	17,217	19,359	+4,835	+33.3%
55-64 years	14,781	13,020	15,507	+726	+4.9%
65-74 years	10,137	13,485	11,915	+1,778	+17.5%
75-84 years	4,803	9,166	12,186	+7,383	+153.7%
85 years & over	1,865	3,183	5,887	+4,022	+215.7%
<b>Total</b>	<b>112,000</b>	<b>128,707</b>	<b>144,728</b>	<b>+32,728</b>	<b>+29.2%</b>

8

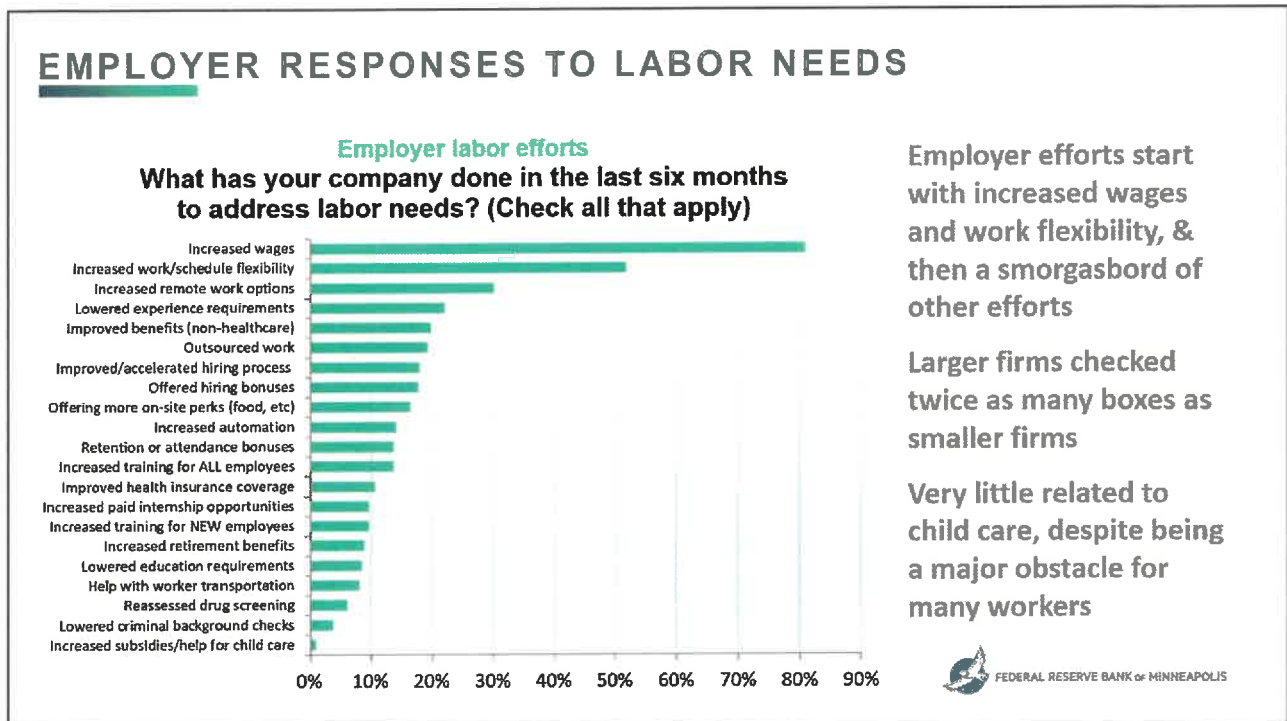


9

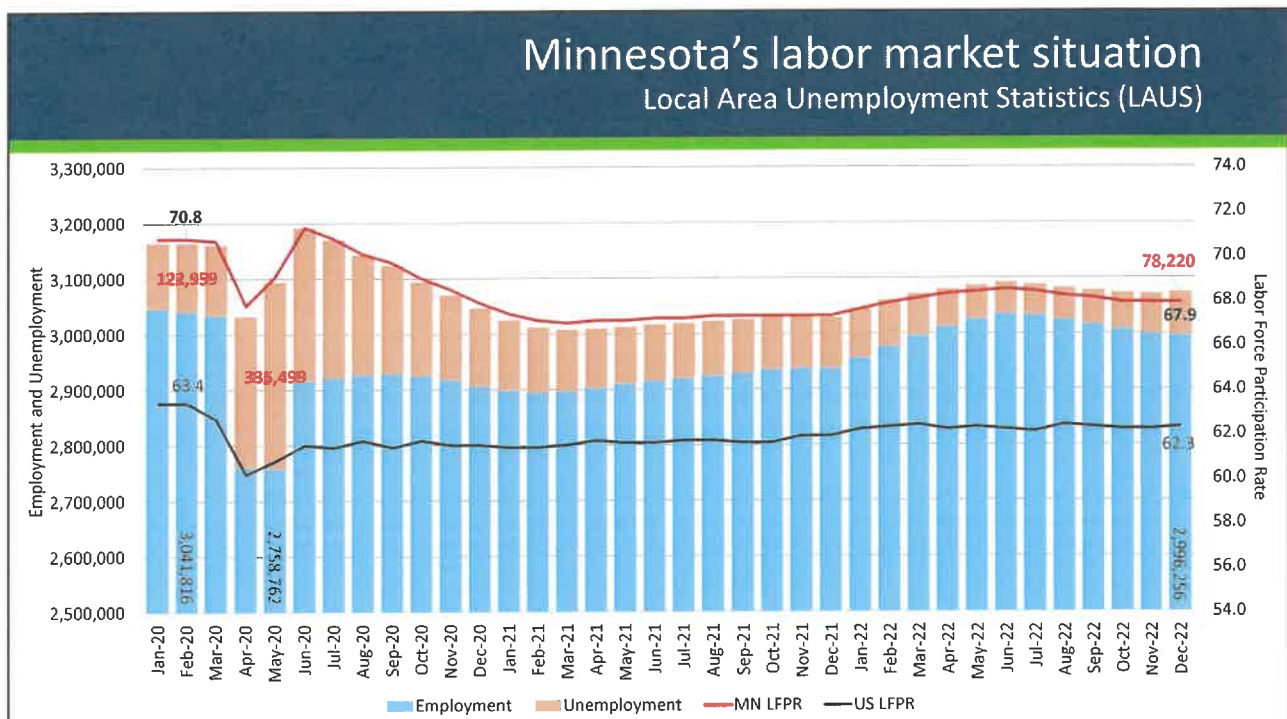


10





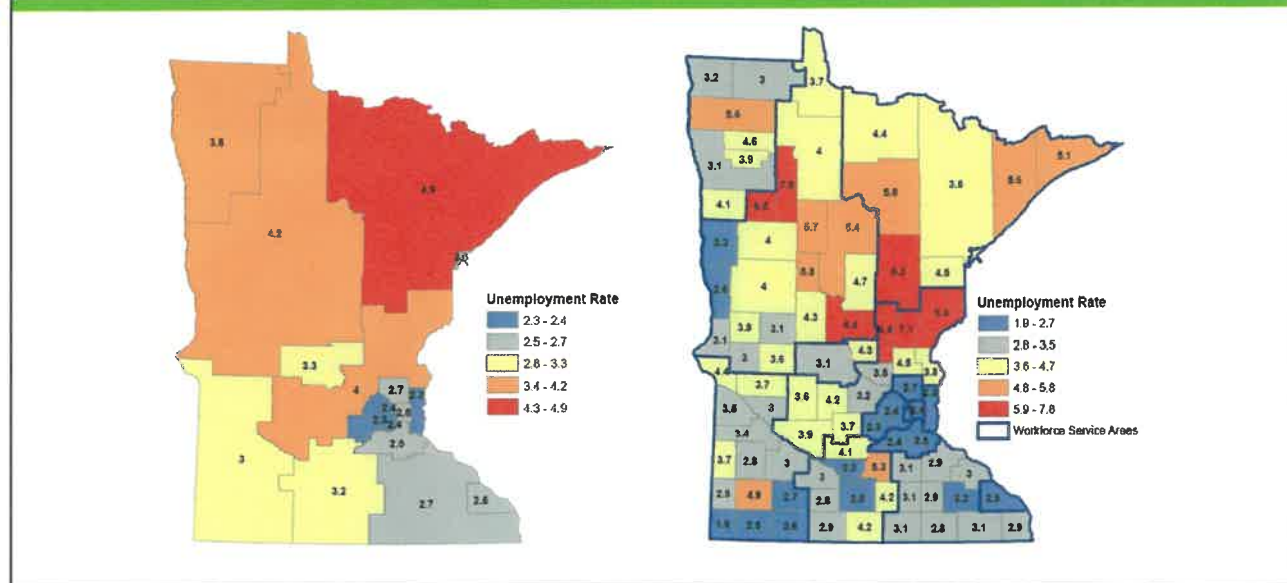
11



12

## Minnesota's labor market situation

LAUS – December 2022



13

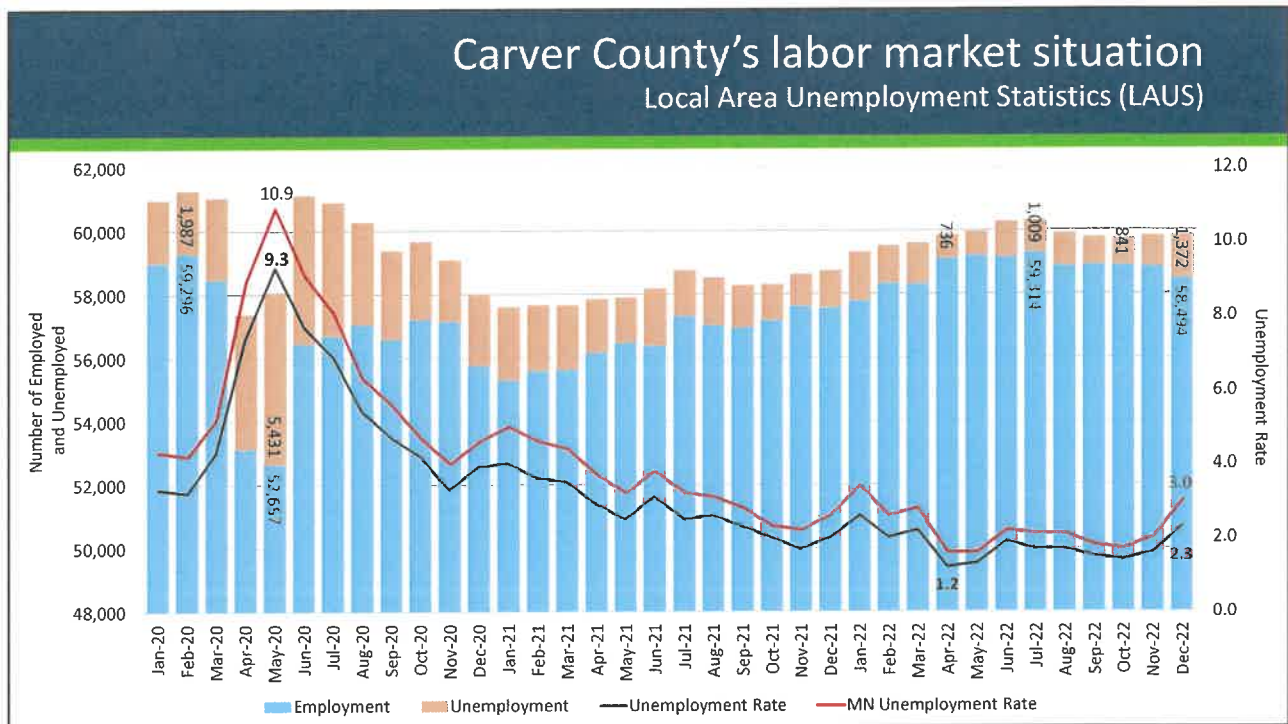
## Carver County's labor market situation

LAUS – December 2022

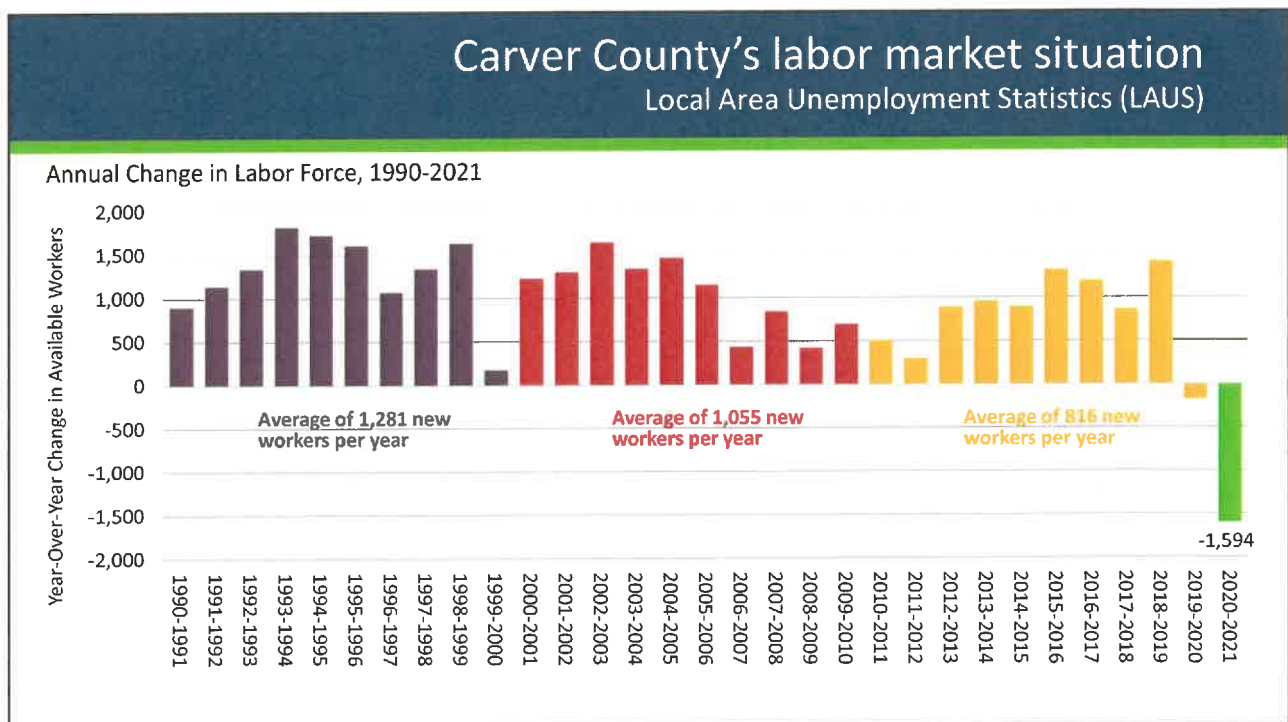
Area	Labor Force	Labor Force Change Feb. 2020 – Dec. 2022		Employment	Unemployment	Unemployment Rate
		Numeric	Percent			
Carver County	59,866	-1,417	-2.3%	58,494	1,372	2.3%
Seven County Metro	1,730,637	-41,051	-2.3%	1,688,084	42,553	2.5%
Minnesota	3,076,179	-91,759	-2.9%	2,985,306	90,873	3.0%
United States	164,224,000	-11,000	-0.0%	158,872,000	5,352,000	3.3%

14





15



16

## Carver County's labor market situation

### Local Area Unemployment Statistics (LAUS)

Labor Force Projections, 2023-2033

Carver Co.	2023 Labor Force Projection	2033 Labor Force Projection	2023-2033 Change		MN Percent Change
			Numeric	Percent	
16 to 19 years	2,963	3,161	+198	+6.7%	+1.1%
20 to 24 years	4,649	4,566	-83	-1.8%	+4.0%
25 to 44 years	26,019	29,198	+3,179	+12.2%	+3.3%
45 to 54 years	13,231	15,685	+2,453	+18.5%	+15.7%
55 to 64 years	11,527	10,153	-1,373	-11.9%	-15.5%
65 to 74 years	3,376	4,491	+1,115	+33.0%	+3.0%
75 years & over	460	852	+392	+85.2%	+42.7%
<b>Total Labor Force</b>	<b>62,225</b>	<b>68,106</b>	<b>+5,881</b>	<b>+9.5%</b>	<b>+2.8%</b>

Source: calculated from Minnesota State Demographic Center population projections and 2017-2021 American Community Survey 5-Year Estimates

17

## Carver County labor force demographics

### American Community Survey (ACS) 5-year estimates

Population	2021 Estimates			MN Labor Force Participation Rate	MN Unemployment Rate
	In Labor Force	Labor Force Participation Rate	Unemployment Rate		
<b>Total Labor Force</b>	<b>59,785</b>	<b>73.8%</b>	<b>3.0%</b>	<b>69.2%</b>	<b>4.0%</b>
16 to 19 years	2,933	48.3%	8.4%	52.3%	10.7%
20 to 24 years	4,527	79.0%	7.4%	83.3%	6.7%
25 to 44 years	24,451	91.2%	2.3%	88.8%	3.6%
45 to 54 years	13,687	91.1%	2.6%	87.6%	3.0%
55 to 64 years	11,124	78.0%	2.2%	73.1%	3.2%
65 to 74 years	2,699	33.3%	2.2%	28.0%	3.2%
75 years & over	345	6.9%	0.9%	6.6%	2.9%

18

## Carver County labor force demographics

American Community Survey (ACS) 5-year estimates

Population	Carver County 2011 – 2021 Change		Minnesota 2011 – 2021 Change	
	Numeric	Percent	Numeric	Percent
<b>Total Labor Force</b>	<b>+8,961</b>	<b>+17.6%</b>	<b>+170,505</b>	<b>+5.8%</b>
16 to 19 years	+261	+9.8%	-3,900	-2.5%
20 to 24 years	+1,241	+37.8%	+1,796	+0.6%
25 to 44 years	+1,534	+6.7%	+88,747	+7.2%
45 to 54 years	-79	-0.6%	-102,618	-14.5%
55 to 64 years	+4,427	+66.1%	+121,991	+28.0%
65 to 74 years	+1,476	+120.7%	+59,246	+65.3%
75 years & over	+101	+41.4%	+5,153	+27.1%

19

## Carver County labor force demographics

American Community Survey (ACS) 5-year estimates

Population	2021 Estimates			MN Labor Force Participation Rate	MN Unemployment Rate
	In Labor Force	Labor Force Participation Rate	Unemployment Rate		
<b>Total Labor Force</b>	<b>59,785</b>	<b>73.8%</b>	<b>3.0%</b>	<b>69.2%</b>	<b>4.0%</b>
White	54,358	73.5%	3.0%	68.5%	3.4%
Black or African American	787	63.1%	6.9%	71.9%	8.6%
American Indian and Alaska Native	138	70.1%	18.8%	57.4%	12.9%
Asian	1,992	76.2%	0.5%	72.7%	4.1%
Some Other Race	675	81.3%	0.9%	75.8%	6.2%
Two or More Races	1,824	84.3%	5.8%	74.1%	7.3%
Hispanic or Latino (of any race)	2,692	87.1%	1.3%	77.0%	6.6%

20

## Carver County labor force demographics

American Community Survey (ACS) 5-year estimates

Population	Carver County 2011 – 2021 Change		Minnesota 2011 – 2021 Change	
	Numeric	Percent	Numeric	Percent
<b>Total Labor Force</b>	<b>+8,961</b>	<b>+17.6%</b>	<b>+170,505</b>	<b>+5.8%</b>
White	+6,486	+13.5%	-37,117	-1.4%
Black or African American	+313	+66.0%	+61,206	+48.9%
American Indian and Alaska Native	+47	+51.6%	-2,350	-9.6%
Asian	+604	+43.5%	+49,604	+46.5%
Some Other Race	+46	+7.3%	+27,762	+75.4%
Two or More Races	+1,471	+416.7%	+70,878	+180.9%
Hispanic or Latino (of any race)	+1,056	+64.5%	+46,978	+40.6%

21

## Minnesota employment trends

1990 to December 2022



22



## Minnesota employment trends

### Current Employment Statistics (CES)

December 2022 Over the Year (OTY) Employment Growth by Industry Sector  
Not Seasonally Adjusted

	MN OTY Job Change	MN OTY Growth Rate (%)	US OTY Growth Rate (%)
Total	+91,936	+3.2	+2.9
Private	+87,587	+3.6	+3.2
Mining & Logging	+35	+0.6	+9.2
Construction	-3,468	-2.8	+3.2
Manufacturing	+12,494	+3.9	+2.9
Trade, Transport. & Utilities	+13,124	+2.5	+1.6
Information	+890	+2.1	+4.8
Financial Activities	+3,559	+1.9	+1.5
Prof. & Business Services	+13,108	+3.5	+2.6
Ed. & Health Services	+25,676	+4.7	+4.0
Leisure & Hospitality	+23,084	+10.0	+6.5
Other Services	-915	-0.8	+3.1
Government	+4,349	+1.1	+1.5

23

## Carver County employment trends

### Quarterly Census of Employment and Wages (QCEW)



24

## Carver County industry statistics

### Quarterly Census of Employment and Wages (QCEW)

Industry	Number of Jobs	Share of Total Jobs	Number of Establishments	Avg. Annual Wage	Share of MN Jobs	LQ
<b>Total, All Industries</b>	<b>40,630</b>	<b>100.0%</b>	<b>2,765</b>	<b>\$64,012</b>	<b>1.4%</b>	<b>-</b>
Manufacturing	9,776	24.1%	160	\$79,976	3.0%	2.1
Health Care and Social Assistance	5,520	13.6%	334	\$62,868	1.1%	0.8
Educational Services	4,472	11.0%	73	\$50,804	1.9%	1.3
Retail Trade	3,711	9.1%	221	\$31,564	1.3%	0.9
Accommodation and Food Services	3,311	8.1%	182	\$21,372	1.5%	1.1
Construction	2,686	6.6%	353	\$74,464	1.9%	1.3
Wholesale Trade	1,897	4.7%	173	\$91,676	1.4%	1.0
Professional, Scientific, and Technical Services	1,564	3.8%	295	\$77,428	0.9%	0.7
Public Administration	1,477	3.6%	31	\$70,148	1.1%	0.8
Arts, Entertainment, and Recreation	1,266	3.1%	64	\$35,672	2.5%	1.7
Administrative and Support Services	1,141	2.8%	153	\$63,544	0.8%	0.6
Other Services	961	2.4%	288	\$37,232	1.1%	0.8
Management of Companies	839	2.1%	23	\$193,232	1.0%	0.7
Finance and Insurance	786	1.9%	139	\$86,268	0.6%	0.4
Real Estate and Rental and Leasing	375	0.9%	122	\$62,712	1.1%	0.8
Information	253	0.6%	62	\$77,064	0.5%	0.4
Agriculture	129	0.3%	28	\$39,676	0.5%	0.4

25

## Carver County industry trends

### Quarterly Census of Employment and Wages (QCEW)

Industry	Number of Jobs	2019 – 2020 Job Change		2020 – 2021 Job Change		2021 – 2022 Job Change	
		Numeric	Percent	Numeric	Percent	Numeric	Percent
<b>Total, All Industries</b>	<b>40,630</b>	<b>-5,300</b>	<b>-12.9%</b>	<b>+2,752</b>	<b>+7.7%</b>	<b>+2,091</b>	<b>+5.4%</b>
Manufacturing	9,776	-608	-6.1%	-126	-1.3%	+558	+6.1%
Health Care and Social Assistance	5,520	-448	-8.6%	+533	+11.2%	+222	+4.2%
Educational Services	4,472	-646	-14.6%	+428	+11.4%	+274	+6.5%
Retail Trade	3,711	-79	-2.2%	+313	+9.1%	-41	-1.1%
Accommodation and Food Services	3,311	-1,404	-38.5%	+897	+40.0%	+171	+5.4%
Construction	2,686	-101	-3.7%	-77	-3.0%	+160	+6.3%
Wholesale Trade	1,897	-77	-4.2%	+40	+2.3%	+91	+5.0%
Professional, Scientific, and Technical Services	1,564	-44	-2.6%	+27	+1.6%	-101	-6.1%
Public Administration	1,477	-131	-8.9%	+50	+3.7%	+89	+6.4%
Arts, Entertainment, and Recreation	1,266	-843	-59.7%	+314	+55.3%	+384	+43.5%
Administrative and Support Services	1,141	-166	-14.0%	+103	+10.1%	+21	+1.9%
Other Services	961	-314	-32.4%	+251	+38.3%	+54	+6.0%
Management of Companies	839	-172	-18.1%	+19	+2.4%	+41	+5.1%
Finance and Insurance	786	-169	-20.3%	-17	-2.6%	+140	+21.7%
Real Estate and Rental and Leasing	375	-14	-3.4%	-39	-9.8%	+14	+3.9%
Information	253	-64	-22.3%	+18	+8.1%	+12	+5.0%
Agriculture	129	-5	-4.3%	+26	+23.4%	-8	-5.8%

26



## Carver County job postings

December 1, 2022 – February 1, 2023

- **Total Job Postings: 3,687**
- Heavy & Tractor-Trailer Truck Drivers: 296
- Registered Nurses: 224
- Hairdressers, Hairstylists, & Cosmetologists: 129
- Accountants & Auditors: 92
- Stock Clerks & Order Fillers: 90
- First-Line Supervisors of Retail Sales Workers: 89
- First-Line Supervisors of Production & Operating Workers: 67
- Maintenance & Repair Workers, General: 67
- Production Workers, All Other: 65
- Light Truck or Delivery Services Drivers: 62
- Driver/Sales Workers: 60
- Personal Care Aides: 59
- Laborers & Freight, Stock, & Material Workers: 57
- Automotive Service Technicians & Mechanics: 51
- Retail Salespersons: 50
- First-Line Supervisors of Food Preparation and Serving Workers: 50
- Industrial Engineers: 48
- Customer Service Representatives: 45
- First-Line Supervisors of Office & Admin. Support Workers: 40
- First-Line Supervisors of Mechanics, Installers, & Repairers: 36

27

## Carver County commuting statistics

- **Workers 16 years and over: 57,439**
- **Means of transportation to work**
  - Car, truck, or van: 80.6%
    - Drove alone: 75.0%
    - Carpooled: 5.6%
  - Public transportation: 1.2%
  - Walked: 1.3%
  - Bicycle: 0.1%
  - Taxicab, motorcycle, or other means: 1.1%
  - Worked from home: 15.7%
- **Place of work**
  - Worked in state of residence: 99.2%
    - Worked in county of residence: 48.0%
    - Worked outside county of residence: 51.2%
  - Worked outside state of residence: 0.8%
- **Living in a place**
  - Worked in place of residence: 27.1%
  - Worked outside place or residence: 64.1%
- **Travel time to work: 26.5 minutes (avg.)**

28

## Labor Market Information (LMI): mn.gov/deed/data

### Data Center



#### Online Tools

We've got online tools to help your job search! Interest Assessments, Skills Assessments, Jobs in Demand, Longer-Term Occupations in Demand, Build Your Resume and more!



### We've Got Your Number

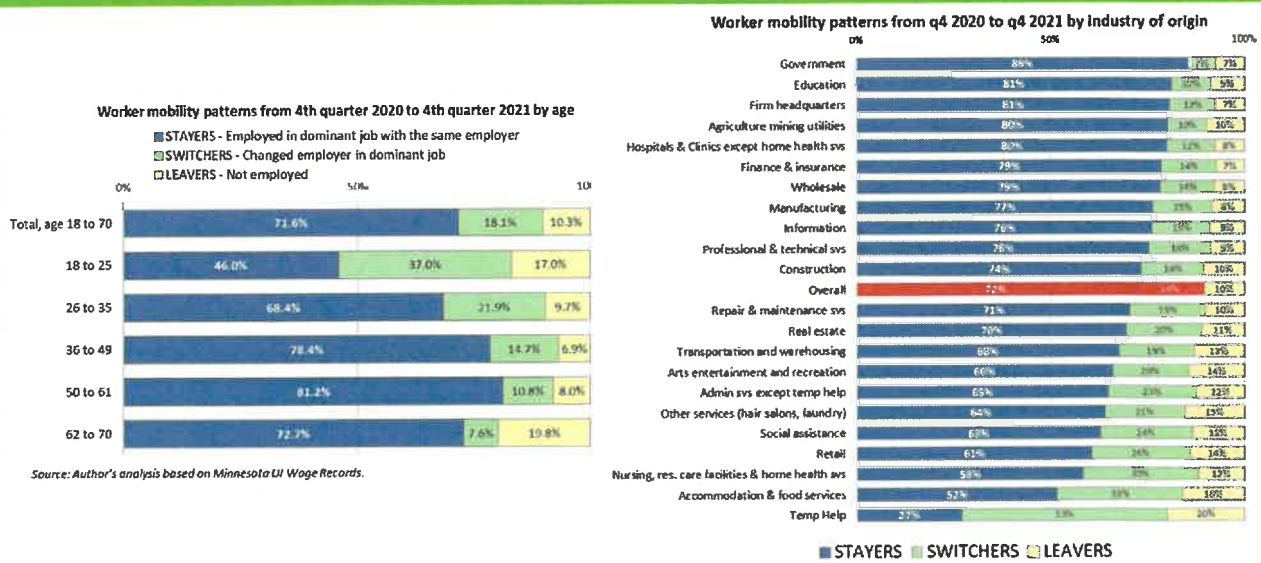
Nothing tells a story like numbers. And here is where we let them do the talking. Our data and data tools provide a comprehensive, nuts-and-bolts look at Minnesota's economy and workforce.

LMI is the foundation for informed, market-responsive planning

29

## MN job mobility in the post-COVID labor market

<https://mn.gov/deed/newscenter/publications/trends/september-2022/mobility.jsp>



30

# Occupational Employment and Wage Statistics (OEWS)

mn.gov/deed/data/oes

First Quarter 2022

You have selected: Statewide, Nationwide, Seven County Mpls-St Paul, MN

Median Wages

Employment

View Checked Only

Download

SOC	Occupation Title	MN	US	Seven County Metro
<input type="checkbox"/> 00-0000	Total All Occupations	\$23.81/hr	\$22.89/hr	\$24.47/hr
<input type="checkbox"/> 11-0000	Management Occupations	\$50.51/hr	\$50.72/hr	\$59.16/hr
<input type="checkbox"/> 13-0000	Business and Financial Operations Occupations	\$38.05/hr	\$37.91/hr	\$36.90/hr
<input type="checkbox"/> 15-0000	Computer and Mathematical Occupations	\$48.34/hr	\$46.59/hr	\$49.75/hr
<input type="checkbox"/> 17-0000	Architecture and Engineering Occupations	\$39.39/hr	\$39.77/hr	\$39.93/hr
<input type="checkbox"/> 19-0000	Life, Physical, and Social Science Occupations	\$37.30/hr	\$36.23/hr	\$39.23/hr
<input type="checkbox"/> 21-0000	Community and Social Service Occupations	\$24.68/hr	\$24.12/hr	\$24.77/hr

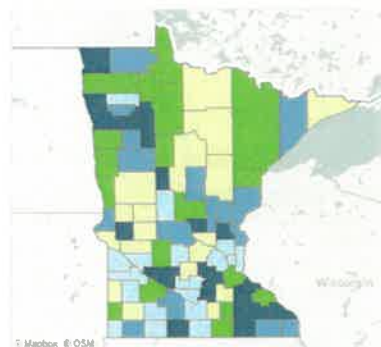
31

## Cost of Living mn.gov/deed/data/col

### Cost of Living in Minnesota

View: Cost of Living Home | About | Methodology | Release Notes for 2021 | Download Spreadsheet | LMI Help

The Cost of Living Tool below provides a yearly estimate of the basic-needs cost of living in Minnesota by county, region, and statewide.



**mn EMPLOYMENT AND ECONOMIC DEVELOPMENT**

Region type:

County

I am:

☐ Single

☐ Partnered - 1 full-time worker

☒ Partnered - 1 full-time 1 part-time worker

☐ Partnered - 2 full-time workers

How many children?

1

Average family size in Minnesota:  
3 persons

#### Family Yearly Cost, Worker Hourly Wage, and Family Monthly Costs

Cost of Living, Minnesota DEED, Labor Market Information, 2021

	Yearly Cost	Hourly Wage	Child Care	Food	Health Care	Housing	Transport	Other	Taxes
Allan County	\$54,604	\$17.50	479	807	538	756	1,022	428	520
Anoka County	\$66,603	\$21.35	684	811	575	1,346	794	591	747
Becker County	\$47,579	\$15.25	252	807	538	756	846	428	338

32

## MN Manufacturing Business Conditions Survey

- Manufacturers expect mostly unchanged conditions in 2023

Compared to 2022, in 2023, you expect your location's:	Up	Same	Down	Diffusion Index 2022 <sup>(2)</sup>	Diffusion Index 2021 <sup>(2)</sup>	Diffusion Index 2020 <sup>(2)</sup>
Number of orders	37%	37%	26%	56	73	67
Product/service production level	33%	55%	12%	61	74	61
Employment level	39%	46%	16%	62	71	63
Investment in plant/equipment	32%	44%	24%	54	64	52
Selling prices	58%	32%	10%	74	86	64
Profits	32%	41%	28%	53	60	51
Productivity	39%	51%	10%	65	67	60
Exports	14%	73%	14%	51	60	52

Expected labor indicators in 2023, compared to 2022:	Decrease	0%	1-2%	3-5%	6-9%	>10%
Wages per worker	1%	11%	12%	60%	14%	4%
Benefits per worker	0%	20%	20%	38%	14%	8%

33

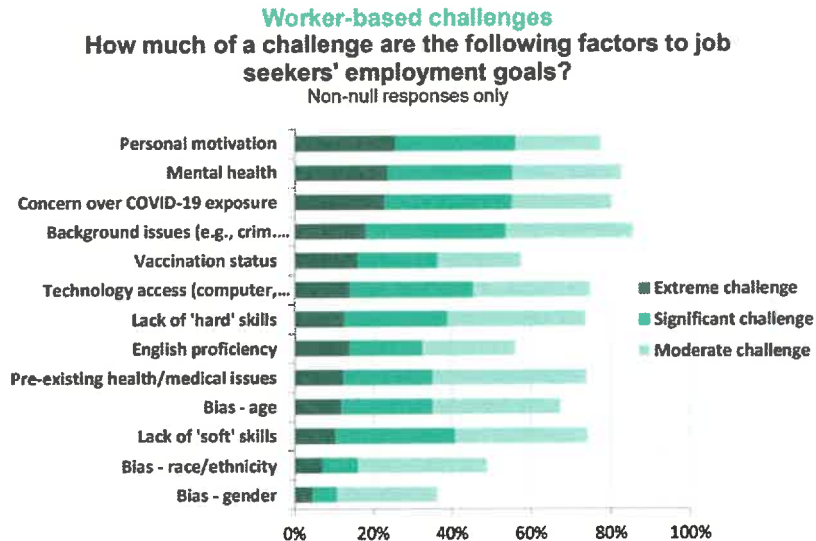
## MN Manufacturing Business Conditions Survey

What is your outlook on the following state economic indicators next year:	Up	Same	Down	Diffusion Index 2022 <sup>(2)</sup>	Diffusion Index 2021 <sup>(2)</sup>	Diffusion Index 2020 <sup>(2)</sup>
Business investment	21%	46%	33%	44	61	50
Employment	23%	47%	29%	47	63	58
Consumer spending	12%	37%	51%	31	57	49
Inflation	73%	18%	9%	82	95	74
Corporate profits	14%	38%	49%	33	43	48

- <https://mn.gov/mmb-stat/000/az/forecast/2023/revenue-and-economic-update/january.pdf>

34

## CHALLENGES TO JOB MATCHING: WORKER-BASED



Multitude of potential obstacles to labor force participation

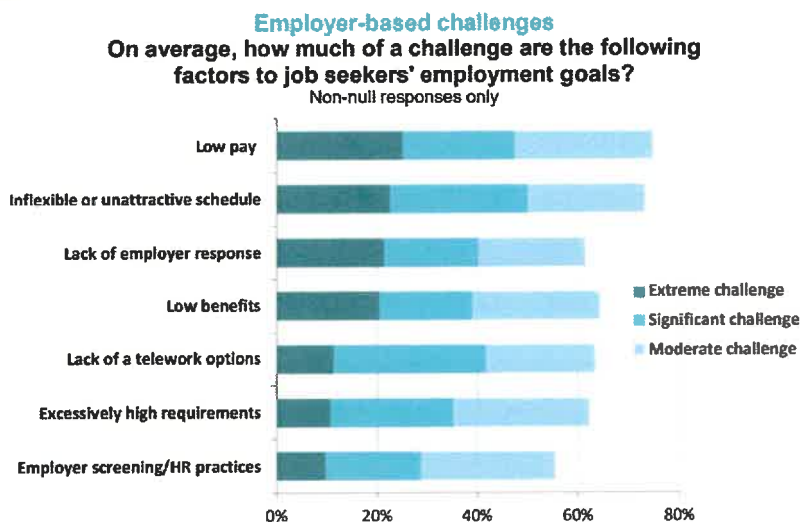
- Some worker-based
- Some employer-based
- Some related to economic environment, government policy

For workers, motivation is an obstacle, but there are also many *other* obstacles (which likely affect motivation...)



35

## CHALLENGES TO JOB MATCHING: EMPLOYER-BASED



When jobs are plentiful, many available jobs are simply not very attractive, and hiring practices are not always very responsive

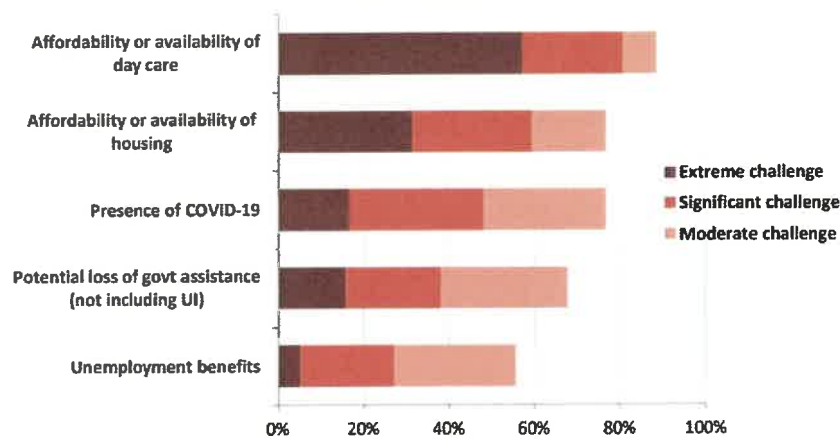


36



## CHALLENGES TO JOB MATCHING: ENVIRONMENT

**Environmental and/or government policy challenges**  
On average, how much of a challenge are the following  
factors to job seekers' employment goals?  
Non-null responses only



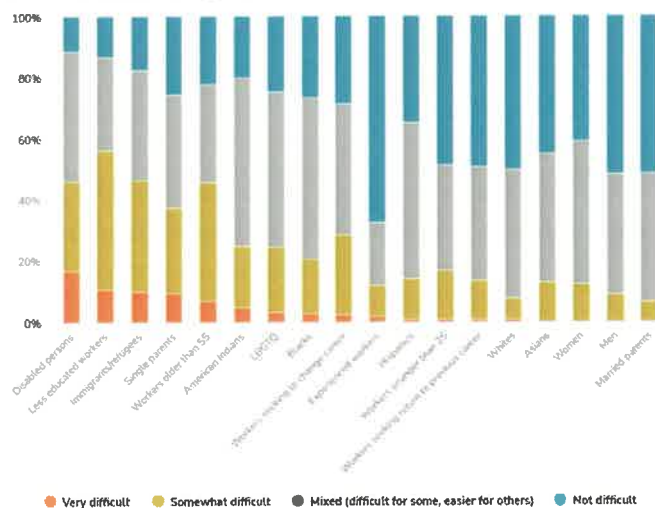
Some challenges reside outside the control of workers & employers, and relate more to current economic and policy environment where job-matching happens



37

## GROUP DIFFICULTIES GETTING PREFERRED JOB

Types of job seekers and their difficulty finding work, according to staff at Minnesota employment agencies



Job-seekers having the most trouble with job-matching have many different traits and circumstances

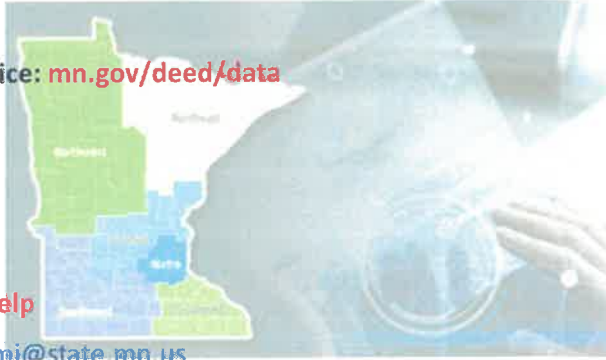
There are likely a lot of cross-cutting and compounding factors that influence job search success



38

## Labor market publications and assistance

- Main DEED website: [mn.gov/deed](https://mn.gov/deed)
- DEED Labor Market Information Office: [mn.gov/deed/data](https://mn.gov/deed/data)
  - Data tools
  - Reports and publications
  - Monthly highlights
- LMI Help: [mn.gov/deed/data/lmi-help](https://mn.gov/deed/data/lmi-help)
  - Send questions by email to [deed.lmi@state.mn.us](mailto:deed.lmi@state.mn.us)
- Regional Labor Market Analysts – Metro Area: Tim O'Neill ([timothy.oneill@state.mn.us](mailto:timothy.oneill@state.mn.us))





TO: Economic Development Commission

FROM: Karen Hallquist, Community & Economic Development Director

DATE: June 14, 2023

SUBJECT: Old Business/Updates

---

#### **7.A Housing Study**

The contract was signed with WSB in May, and they have started doing research for the study. The timeline for completion is August 2023. Staff applied for the Carver County CDA Community Growth Initiative Pre-Development Grant Program in the amount of \$7,500 for the 1-1 match.

Attached is the 2022 Annual Population Estimate that was provided by Met Council and distributed to LGUs the end of May.

#### **7.B Façade Program**

Staff will provide a draft of the guidelines at the meeting.

#### **7.C Central Trades & Advisory Group Update**

The CTA group will resume meetings in September 2023. Staff will reach out to Superintendent Schochenmaier to confirm a date in October for the NYA Manufacturing Today event. Members of the Carver County Workforce Development/Economic Development Partners will be attending the event.

#### **7.D NYA Area Chamber of Commerce Updates**

# Norwood Young America city, Carver County

## 2022 Annual Population Estimate

Published May 25, 2023 (preliminary; distributed for local government review)



	Housing units	Occupancy rate	Households	Persons per household	Population in households	Population in group quarters	Total population
<b>2022 Estimate</b>	<b>1,717</b>	<b>94.87%</b>	<b>1,629</b>	<b>2.4285</b>	<b>3,956</b>	<b>52</b>	<b>4,008</b>
<b>2020 Census</b>	<b>1,632</b>	<b>95.04%</b>	<b>1,551</b>	<b>2.4629</b>	<b>3,820</b>	<b>43</b>	<b>3,863</b>

The Metropolitan Council estimates population using the housing unit method, which answers three main questions for each jurisdiction as of April 1, 2022.

### First, how many housing units did the community have?

- We start with housing units measured by the 2020 Census. We broke down the total number of housing units in the 2020 Census into different housing types using county parcel data and other data sources.
- We then add units built between April 1, 2020 and April 1, 2022, based on permits reported to us by communities. Permit data is [available on our website](#).
  - We assume that 90% of single-family detached units and 85% of townhome/duplex/triplex/quadplex units permitted in 2021 were completed and occupiable by April 1, 2022.
  - Multifamily units permitted in and after 2020 are assumed to be completed if they received a certificate of occupancy by April 1, 2022. Multifamily units permitted before 2020 that were not open at the time of the 2020 Census are also included.
  - Manufactured home data comes from our annual surveys of manufactured home park operators and local governments.
  - Data on other housing (boats, RVs, etc. used as housing) comes from the [most recent American Community Survey data](#); this housing is included in the estimates only if occupied.
- We also examine other housing stock changes reported by jurisdictions. These include demolitions, building conversions (units added or lost), boundary changes (units annexed in or out), and other changes.

	Housing stock April 1, 2020	Permitted and built since 2020	Other changes since 2020	Housing stock April 1, 2022
<b>Single-family detached</b>	1,230	24	0	1,254
<b>Townhome (Single-family attached)</b>	12	11	0	23
<b>Duplex/triplex/quadplex</b>	15	0	0	15
<b>Multifamily (5 or more units)</b>	359	0	50	409
<b>Accessory dwelling units (ADUs)</b>	0	0	0	0
<b>Manufactured homes</b>	16			16
<b>Other units</b>	0			0
<b>Total</b>	<b>1,632</b>			<b>1,717</b>

## Second, how many of these housing units were occupied by households?

- Each housing type has an estimated occupancy rate. These data come from the most recent American Community Survey estimates for **housing units** and **households**, **decennial census data** from the U.S. Census Bureau, and the **U.S. Postal Service**. To estimate multifamily occupancy rates, we also use **CoStar**, a proprietary data source covering the apartment market.
- Multiplying the number of housing units of each type by the occupancy rate yields the number of households (occupied housing units).

## Third, how many people lived in these occupied housing units?

- Each housing type has an estimated average household size. These data come from the most recent American Community Survey estimates of **households** and **population in households** as well as decennial census data from the U.S. Census Bureau.
- Multiplying the number of households in each housing type by the average household size yields the population in households.

	Housing stock April 1, 2022	Occupancy rate	Households (Occupied housing units)	Persons per household	Population in households
<i>Single-family detached</i>	1,254	94.88%	1,190	2.7943	3,325
<i>Townhome (Single-family attached)</i>	23	94.59%	22	2.7943	61
<i>Duplex/triplex/quadplex</i>	15	93.26%	14	2.2681	32
<i>Multifamily (5 or more units)</i>	409	94.96%	388	1.3019	505
<i>Accessory dwelling units (ADUs)</i>	0	99.70%	0	1.5521	0
<i>Manufactured homes</i>	16	96.11%	15	2.2092	33
<i>Other units</i>	0	100.00%	0	1.6346	0
<b>Total</b>	<b>1,717</b>	<b>94.87%</b>	<b>1,629</b>	<b>2.4285</b>	<b>3,956</b>

To obtain the total population, we also add the number of residents in group quarters facilities.

These are residences that are not part of the standard housing market, such as college dormitories, nursing homes, prisons and jails, and group homes. Data come from the Metropolitan Council's annual survey. A list of facilities in each community can be found at <https://www.metrocouncil.org/populationestimates>.

Population in households	Population in group quarters	Total population April 1, 2022
3,956	52	4,008

Due to rounding, not all estimates can be reproduced exactly from the above inputs.

For more information, see our methodology document, available from <https://www.metrocouncil.org/populationestimates>.