



NORWOOD YOUNG AMERICA PARKS AND RECREATION COMMISSION

Tuesday October 19, 2021

Meeting at 4:45pm in Council Chambers

AGENDA

**Members; Parks-Chair Charlie Storms—Council Member, Vice-Chair Sharilyn Feltmann, Secretary Karla Hormann, Jim Zellmann, Dan Stender, Bryan Rehneft
Planning Commission Representative; Bill Grundahl
School Representative; Kelly Vossen
Staff; Tony Voigt—Public Service Director**

- 1. Call to Order**
 - 1.1. Pledge of Allegiance**
 - 1.2. Oath of Office**
- 2. Adoption of Agenda**
- 3. Approve Minutes Of 9-21-2021 meeting**
- 4. Introductions, Presentations, and Public Comment**

(Individuals may address the Parks Commission about any non-agenda item of concern. Speakers must state their name, address, and limit their remarks to three minutes. The Parks Commission will not take official action on these items but may refer the matter to staff for a future report or direct that the matter be scheduled for a future meeting agenda.)
- 5. Old Business/Goals (Updates)**

Willkommen Memorial Park, Old Town Buildings

 - 5.1. Open discussion meeting in regards to Old Town repair**

*Exterior Lighting at Hwy 212 Trail, Kehrler Park, and the underpass
The lights are on, and the project is complete.*

*West Carver Community Pool, resurface plaster in lap pool
The plaster project will commence in Spring of 2022.*

South Park Hockey Rink, repair boards, add LED lighting

 - 5.2 South Park Warming House Electrical Upgrade Project approved**

Trail and Sidewalk Maintenance

 - 5.3 Concrete Raising and Leveling Project approved**

Replace Playground Equipment at Legion Park

 - 5.4 Legion Park Playground Replacement Update**

Norwood Young America

Bench Locations

Most ordered benches are in place

6. New Business

6.1. Pickleball Court line painting at Friendship Park

7. Miscellaneous Updates

8. Commissioner Report/Updates

9. Adjourn

Upcoming meetings and events

October 23,	NYA Marketplace @ Carquest, 9am-12pm
October 21,	Special City Council Meeting for the purpose of City Administrator Interviews, 1pm
October 25,	EDA, City Council, Work Session—6pm
October 29,	Harvest Soup Drive-Thru @ Willkommen Memorial Park 4:30 pm - 6:30 pm
November 2,	Planning Commission, 6pm
Novembr 8,	City Council—6pm
November 10,	EDC Meeting—6pm

Norwood Young America



more than a place. it's home.

NORWOOD YOUNG AMERICA PARKS AND RECREATION COMMISSION

Tuesday September 21, 2021

Meeting at 4:45pm in Council Chambers

minutes

Members present; Parks-Chair Charlie Storms—Council Member, Vice-Chair Sharilyn Feltmann, Secretary Karla Hormann, Jim Zellmann, Dan Stender, Bryan Rehneit

Staff present; Tony Voigt—Public Service Director

Other present; Josh Eckstein w/Bolton & Menk, Bailey Wolf w/Flagship Recreation

1. **Call to Order;** CS called meeting to order at 4:52pm
 - 1.1. **Pledge of Allegiance**
2. **Adoption of Agenda;** TV requested to move 5.4 and 6.1 to be the first items of the meeting. Motion approved with the included changes by JZ, DS second, motion passed 6-0
3. **Approve Minutes Of 8-17-2021 meeting;** Minutes were approved by BR, second by SF. Motion passed 6-0
4. **Introductions, Presentations, and Public Comment**
(Individuals may address the Parks Commission about any non-agenda item of concern. Speakers must state their name, address, and limit their remarks to three minutes. The Parks Commission will not take official action on these items but may refer the matter to staff for a future report or direct that the matter be scheduled for a future meeting agenda.)
5. **Old Business/Goals (Updates)**
 - 5.4 **Flagship Recreation representative Bailey Wolf will be present to review playground options.**
BW presented updates on the included info in the packet along with color options. BW stated there is not an option to add an 8" tall slide to the Venti Playset. CS asked if the color changes price, BW said no. KH stated spinners are a popular feature, BW agreed and said the spinning and climbing options are hot elements. BW stated you could get 9 kids on the option 2 spinner in the included information and they have a speed governor. KH and SF liked option 2. BR liked option 2 with the colors of option 1. KH liked the curved climber on option 2. BR asked how tall the arch ladder, BW answered 5'. CS asked BW about the pricing, BW stated option 1 is \$63,687 and option 2 is \$58,825. DS liked option 2, didn't want an extra tall slide since the park has an existing tall slide. TV stated he did not create a memo with suggested motion. CS asked about ordering after the first of the year. BW will ask LSI if they can hold pricing. CS needs this year price and next years increase. BW stated the 2022 pricing will be set after Oct 8th. CS stated we need to follow MN state law regarding budget numbers. CS stated we should ask the mayor and the treasurer to hold commitment for purchasing in 2022. KH asked what the price increase would be, BW answered 3-6%. CS asked if the second council meeting of month is for purchasing, TV stated he believed it could be made at the first or second. BW will check price increase. KH and CS stated we need to check with the mayor. SF asked why pricing is set on Oct 8th, BW answered because of covid the increase will be set by end of Oct and the lead times for delivery are getting pushed out further than usual. Commission agreed option 2 will be the best fit. TV stated he will get the updated 2022 pricing.

Norwood Young America

6. New Business

6.1. Second Avenue Infrastructure Improvement Project, Sidewalk Improvements

Josh Eckstein was present with Bolton and Menk to discuss the information included in the packet. SF asked if the \$475,000 including everything for the sidewalk along 2nd Ave, JE answered yes. CS asked if we go from diagonal to parallel parking how many parking spots will we lose, JE answered 43. CS asked if we remove the sidewalks on the East side can we widen the street to offer more room for diagonal parking? JE answered if we remove the sidewalk by old City Hall, we may get too close to the building. CS mentioned if we bring the sidewalk down to the 5-way, there will be snow clearing concerns. DS asked if the proposed sidewalk would be 5' with buffer? JE answered yes like Central Ave. JE mentioned the street will be more expensive if we make it 4' wider. KH asked who is responsible for the sidewalks that not in some one's front yard? TV stated all the property is owned by someone regardless of it being front or back yard. DS asked if curbs get removed automatically with the project? JE answered typically yes due to elevation and drainage changes. DS asked if curb by St. John's Church is removed, will sidewalk stay? JE answered if the curb touches the sidewalk, all will get replaced together. DS asked if the \$475,00 includes all sidewalk along 2nd Ave? JE answered yes. DS asked if the sidewalk by Councilman Krueger's residence are 5'? JE answered he was not sure since they were not proposing to replace them. CS asked if there ever was sidewalk all the way down 2nd Ave to the 5-way? DS, KH, and SF all commented they didn't think it ever went further south than the curve by Shady Lane. CS said no to sidewalk along 2nd Ave. KH commented on the connectivity to other sidewalks on 2nd Ave to other sidewalks in town. CS recommended a neighborhood meeting if they chose to move forward with sidewalks. DS asked when they will start the second phase of 2nd Ave? JE stated earlier start in 2022 due to size of project. CS stated this will be in 2022 budget. CS asked if we should hold a neighborhood meeting? KH stated if Parks says no do we need a meeting? JE stated we would not need a neighborhood meeting if Parks makes a recommendation approved by City Council. KH commented on the poor lighting on 2nd Ave, but the lack of parking allows walkers to be safe. CS stated one overhead light on each block is consistent throughout the city. SF asked if city will enforce snow removal? CS stated Central Ave gets plowed by City currently and neighbors would not approve of plowing on 2nd. JE asked if the East side sidewalk on 2nd Ave from 2nd St to Main St should be removed? DS, BR, JZ, KH, and SF all agreed to recommend removing the sidewalk from the 2022 project.

Willkommen Memorial Park, Old Town Buildings

5.1. Update on Old Town Project

TV presented the info in the memo. CS asked what groups to reach out too? SF shared her frustration and with the slow progression, didn't understand why it is taking so long to hire someone and was concerned about the 2022 budget for the project. CS stated they put another \$200,000 in the 2022 budget for the project along with the \$100,000 not spent in 2021 for a total of \$300,000. CS stated the contractor bid was too much time and material. SF asked if the contractor can bid different? DS recommended working on the unknown costs, and commented on the groups coming to the next meeting may ask for changes and cost attached to those changes. CS recommended we build off construction plans and not agree to time and material. CS would like to sign a contract to what it costs to rebuild. TV stated he will work on a RGF to build off the original blueprint. SF asked about donations. DS recommended rebuilding off original specs as well. CS October Parks Meeting will be an open discussion looking for suggestions and other opinions. SF agreed to the meeting. JZ stated it would be a good idea to get others involved. SF would like to get other groups involved at the October meeting.

Exterior Lighting at Hwy 212 Trail, Kehrre Park, and the underpass

5.2. Update on Hwy 212 Trail Lighting Project

TV presented the information in the memo.

Norwood Young America

West Carver Community Pool, resurface plaster in lap pool

5.3. Update on West Carver Community Pool Resurface Project

TV presented the information in the memo.

South Park Hockey Rink, repair boards, add LED lighting

Director Voigt sent out RFQ's and plans to present quotes at the September 27 City Council Meeting in regards to the LED lighting.

Trail and Sidewalk Maintenance

Director Voigt sent out RFQ's and plans to present quotes at the September 27 City Council Meeting in regards to removing trip hazards around the community.

Bench Locations

No Updates.

7. Miscellaneous Updates; *TV stated he will verify if he chooses to plant trees in the fall at Kehrer Park and Legion Park. SF requested the pavers get fixed at Willkommen Park sidewalk, remove the flower boxes at Old Town, and reseed the area at Willkommen between the Gazebo and the Pavilion.*

8. Commissioner Report/Updates

JZ, asked to look at the water standing near Hwy 212 trail by Post Office, may pose an issue in freezing temps.

BR, questioned if we are still looking into a splash pad a possible locations for one.

SF, commented on Willkommen Park looking good for Stiftungsfest

DS, Said the grading looked good on Wilson St sidewalk installation and also commented on Willkommen Park looking good for Stiftungsfest . DS requested looking at the tree branches over the sidewalk on Faxon Rd near Poplar Ridge Appartements.

9. Adjourn; *Motion to adjourn by JZ, second by DS. 6-0 vote in favor at 6:50*

Minutes submitted by,

Tony Voigt, Public Service Director

Norwood Young America



TO: Parks and Recreation Commission Members

FROM: Tony Voigt, Public Service Director

DATE: October 19, 2021

RE: Open discussion meeting in regards to Old Town repair

At the September 13 City Council meeting, I presented the lack of interest and zero quotes that followed the RFQ I prepared in regards to the Old Town project. I requested City Council to offer further direction on how to move forward with the project.

I was directed by City Council to obtain quotes which include tearing down and rebuilding Old Town. I am currently working on a new RFQ and plan to solicit for quotes soon.

I was also directed to invite residents and civic organizations to the October Parks Meeting for a public discussion to gather ideas, volunteer commitment, or possible donation monies. City Hall will advertise for the meeting.

Norwood Young America



TO: Parks and Recreation Commission Members
FROM: Tony Voigt, Public Service Director
DATE: October 19, 2021
RE: South Park Warming House Electrical Upgrade Project

The City Council approved hiring A1 Electrical Services to complete this project. I have included the memo and all corresponding documents that were submitted and approved. A1 ordered the lights and will keep in contact with an install date. The deadline for the installation is December 15th.

Norwood Young America

310 Elm Street West PO Box 59 – Norwood Young America, MN 55368 – (952)467-1800 – www.cityofnYA.com



TO: Honorable Mayor Lagergren and City Council Members
FROM: Tony Voigt, Public Service Director
DATE: October 11, 2021
RE: South Park Warming House Electrical Upgrade Project

The Warming House was replaced at South Park in 2019. At that time, we installed new electrical wiring in the building which included a new meter socket on the North side of the building. The intent was to install a new underground service and vacate the outdated overhead wiring on the existing dilapidated power pole located near the Northeast corner of the building.

Along with the improved electrical service, I intend to have new LED lighting installed which lights the hockey rink and free skate area. The existing lights are quartz halogen lights which are not very bright, extremely energy inefficient and require multiple bulb change outs each year. We intend to replace the 6 Halogen lights on the hockey rink with 4 LED Flood lights and replace the 2 halogen lights over the free skate area with one LED. I contacted a lighting representative for the proper light specifications. I was instructed to install LED flood lights for maximum area coverage versus installing a parking lot style area light. The lighting dynamics cut sheet I received, illustrated this is this proper amount of light for this area and should provide sufficient lighting with increased reliability and energy efficiency.

The existing light poles appear to be in good condition along with the wiring and conduit. We plan to reuse these items and keep them in service.

I created an RFQ to obtain quotes and solicited to 3 contractors. I received the 2 quotes as follows.

- | | |
|-----------------------|--------|
| • A1 Electric Service | \$8665 |
| • Choice Electric | \$8750 |

The Parks Commission made a recommendation to include this project as a priority to be completed in 2021. The city had budgeted \$8000 for this upgrade in the 2021 Parks Capital Outlay. The proposed project is \$665 over the budgeted amount. The Pool Plaster Project budgeted in the 2021 Parks Capital Outlay came in \$14,695.50 under budget, therefore we should be well under the total budget for these projects. The deadline for the project is December 15, 2021 as defined in the RFQ.

Suggested Motion: Motion to hire A1 Electric Service to complete the South Park Warming House Electrical Upgrade Project for \$8665.

Norwood Young America



REQUEST FOR QUOTES

Norwood Young America South Park Warming House Electrical Upgrade Project

City of Norwood Young America
310 Elm Street W.
P.O. Box 59
Norwood Young America, MN 55368

I. GENERAL PROVISIONS

- A. The City of Norwood Young America is accepting quotes to replace the overhead lighting with LED and install new electric service line
- B. Quotes submitted must provide complete information as indicated in this request.
Deadline for submitting quotes is **10:00 a.m., Thursday October 7th, 2021.**
City of Norwood Young America
Attention: Tony Voigt
P.O. Box 59
Norwood Young America, MN 55368
- C. Questions and inquiries regarding this request should be directed to:
Tony Voigt
Public Service Director
P.O. Box 59
Norwood Young America, MN 55368
(320) 761-5008
tvoigt@cityofnYA.com

II. Scope of Work

- A. Install LED light fixtures on existing poles
- Remove the existing 7 overhead halogen lights on the existing light poles located on the East side and West side of the Hockey Rink. Install 5 LED flood light replacements on the existing poles. The West pole will have 2 LED flood lights aimed at lighting the West side of the Hockey Rink. The East pole will have 2 LED flood lights aimed at lighting the East side of the Hockey rink, and 1 LED flood light aimed to illuminate the free skate area.
- B. Install a new electrical service line to the warming house
- Remove all existing electrical wiring to the existing power pole located at the Northeast corner of the warming house which includes disconnecting the overhead service, disconnecting the service wire into the warming house, and disconnecting the wiring that powers the existing light on the pole. The entire pole will be removed once the project is complete.
 - Install approximately 50' of new service line from the existing Xcel power pole to the existing meter socket on the north side of the warming house.
 - Contractor will be required to remove all spoil piles and level all disturbed areas to previous project conditions
 - Contractor is required to obtain all required permits and coordinate with Xcel Energy to move the electrical services on their existing pole
- C. LED Flood light specifications
- The flood lights shall be an LSI T2XFL-LED-50L-F-40. Please contact Steve Hahn at shahn@lumasales.com or 612-386-7207 for purchasing assistance.

D. Location

- The project is located at South Park which is 321 South St W Norwood Young America, 55368

III. Insurance

The successful Contractor shall carry the following minimum limits of insurance coverage and provide proof of such to the City. The City shall be listed as an Additional Insured.

Commercial General Liability per occurrence for bodily injury and property damage	\$1,000,000
Aggregate	\$2,000,000
Automobile Liability	\$1,000,000
Workers Compensation and Employers' Liability	\$500,000

IV. Project Completion

The scope of work is to be completed by **December 15th, 2021**.

V. Contractor Warranty

Contractor shall warrant their workmanship.

VI. City Responsibilities

- a. City will be responsible for disposal of all removed materials
- b. City will be responsible for removing the existing overhead light/power pole once all services are vacated
- c. City will seed the disturbed areas when project is complete
- d. City will patch any blacktop areas that need to be removed to allow trenching the new underground service.

VII. Job Site Clean-up

The Contractor is responsible for cleaning up after themselves.

VIII. Quote

Quotes shall be provided as a whole dollar amount for the entire scope of work.

IX. Right to Reject Quotes

The City reserves the right to reject any and all quotes received.

X. Disclaimer

The City of Norwood Young America shall not be liable for any costs incurred by a contractor responding to this request for quotes or for any costs associated with discussions required for clarification of items related to this quote.

CONTRACTOR'S QUOTE

Company name: _____

Contact Person: _____

Title: _____

Address: _____

Phone Number: _____

Quote: \$ _____

Signature: _____

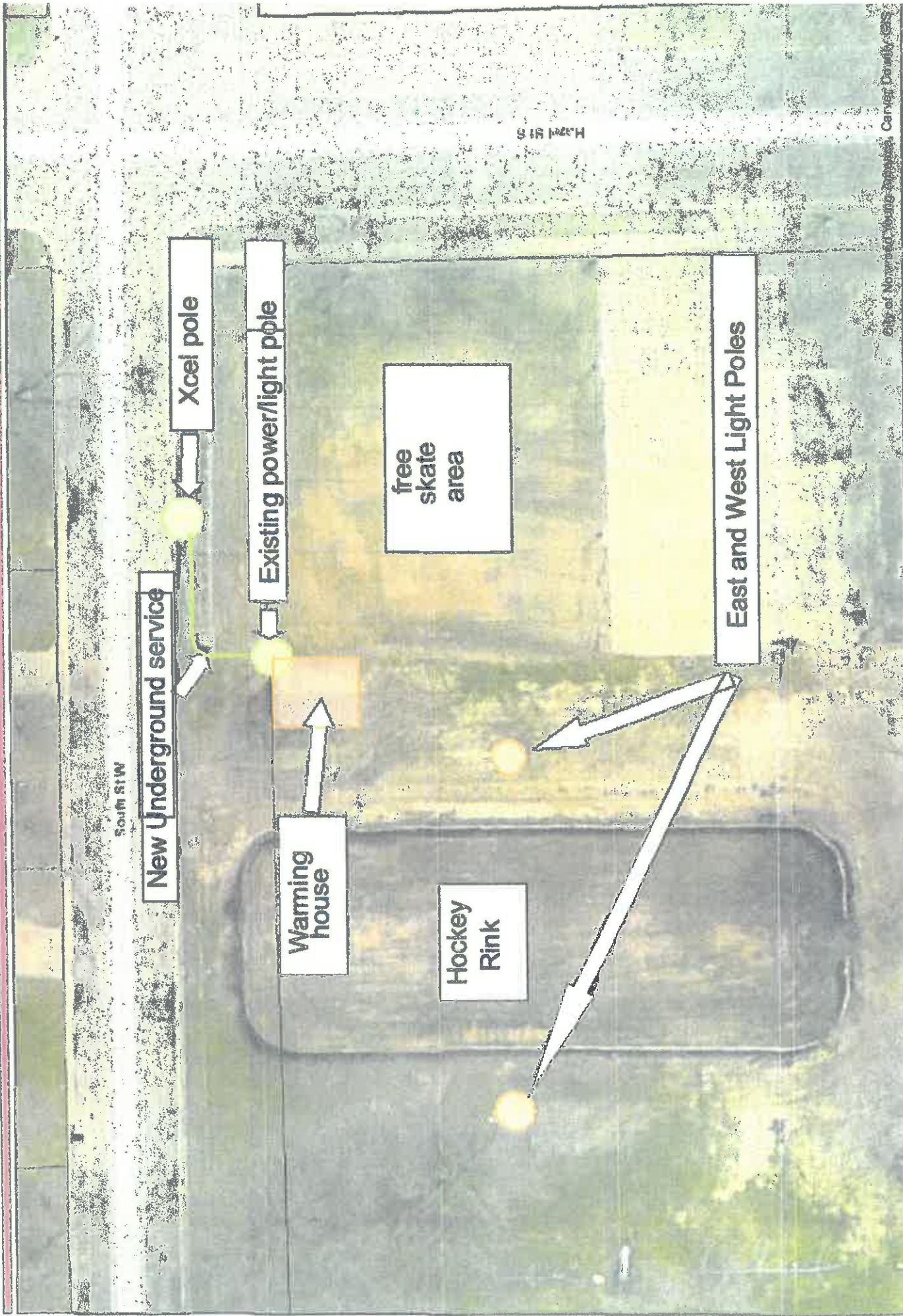
Date: _____



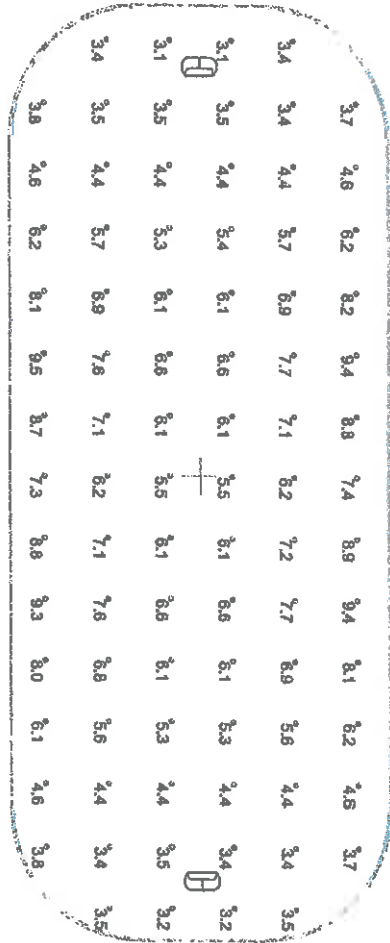
CITY OF NORWOOD YOUNG AMERICA

South Park Electrical Project

Map Date: 9/17/2021



MMH:200



MMH:200

Luminaire Schedule									
Symbol	Qty	Label	Arrangement	Lum. Lumens	LUF	Description	Lum. Watts	Total Watts	
	4	T2XFL-LED-SOL-F-40	Single	4910	0.300	T2XFL-LED-SOL-F-40	357	1428	

Calculation Summary									
Label	CalcType	Units	Avg	Max	Min	Avg/Min	Max/Min		
Calcs 1	Illuminance	Fc	5.77	9.5	3.1	1.86	3.06		

Scale: 1 inch= 30 Ft.

These drawings are for conceptual use only and are not intended for construction. Future runs and quantities should be verified prior to order. Values represented are an approximation generated from manufacturers photometric info or independent lab tests with data supplied by lamp manufacturers.

Recreational Hockey

Norwood Young America

Drawn By: Joe Frey
Agent: Steve Hahn
Date: 9/8/2021
Scale: As Shown

REVISIONS

Date Comments



Luma Sales Associates
Lighting and Controls

LS952-3845

CONTRACTOR'S QUOTE

Company name: A-1 Electric Service

Contact Person: Ted LaFrance

Title: Owner

Address: 348 Industrial Blvd. Waconia, MN 55387

Phone Number: 952-442-5332 or Ted's Cell 651-764-9519

Quote: \$8,665

Signature: 

Date: 10-4-21

CONTRACTOR'S QUOTE

Company name: Choice Electric

Contact Person: Jesse Thompson

Title: Vice President Sales

Address: 3080 4th Ave. E.

Phone Number: 612-600-5670

Quote: \$ 8,750.00

Signature: 

Date: 9/24/21



TO: Parks and Recreation Commission Members

FROM: Tony Voigt, Public Service Director

DATE: October 19, 2021

RE: Concrete Raising and Leveling

The City Council approved hiring Northstar Mudjacking & More to remove identified trip hazards around the community. I have included the memo and corresponding documents that were submitted to City Council and approved. Northstar plans to complete the work by the end of October.

I budget approximately \$15,000 a year to repair concrete sidewalks and remove known trip hazards around the community. I will continue to do so as needed and the budget allows.

Norwood Young America

310 Elm Street West PO Box 59 – Norwood Young America, MN 55368 – (952)467-1800 – www.cityofnya.com



TO: Honorable Mayor Lagergren and City Council Members
FROM: Tony Voigt, Public Service Director
DATE: September 27, 2021
RE: Concrete Raising and Leveling

I am proposing to hire a concrete raising/leveling contractor to remove trip hazards in the designated areas on the included maps of the included RFQ. I have proposed these specific areas in town since we have previously experienced trips and falls.

The process of raising and leveling concrete works on areas that currently have concrete in good condition with minimal cracking. This saves time and money by not having to demo and replace the concrete in the settled areas. We did quite a bit of slab leveling and raising in 2019 around City Hall and the Heritage Center. These areas have not settled or needed extra attention since 2019.

I am proposing to hire contractors to mud jack the areas. Mud Jacking is the process of drilling a hole, using a pump to force a concrete and aggregate slurry into the void under the slab which raises the slab, and then filling the hole level with concrete to complete the process. The concrete and aggregate slurry will then harden and keep the void filled not allowing the slab to resettle.

I created an RFQ to obtain quotes. I solicited to 4 contractors included the 2 quotes I received below.

- | | |
|-------------------------------|----------|
| • Northstar Mudjacking & More | \$16,800 |
| • Cement Raising Inc. | \$17,075 |

The deadline for the project is set for December 31, 2021. We planned for \$15,000 of sidewalk repair in 2021. This money is budgeted in the Repair/Maintenance Bldg/Grounds line item under Hwys, Streets & Roads for 2021. As of the August 19, 2021 budget reflected we have \$43,590.58 left under this line item.

Suggested Motions: Motion to hire Northstar MudJacking & More to Raise and Level the designated Concrete areas for the amount of \$16,800

Norwood Young America



REQUEST FOR QUOTES

Norwood Young America Concrete Raising and Leveling

City of Norwood Young America
310 Elm Street W, PO box 59
Norwood Young America, MN 55368

I. GENERAL PROVISIONS

A. The City of Norwood Young America is accepting quotes to raise/level designated concrete sidewalks, aprons and curb and gutter

B. Quotes submitted must provide complete information as indicated in this request.

Deadline for submitting quote is 8:00 a.m., Thursday September 23rd, 2021.

City of Norwood Young America

Attention: Tony Voigt

P.O. Box 59

Norwood Young America, MN 55368

C. Questions and inquiries regarding this request should be directed to:

Tony Voigt

Public Service Director

P.O. Box 59

Norwood Young America, MN 55368

(320) 761-5008

tvoigt@cityofnva.com

II. Scope of Work

A. Remove trip hazards in identified areas

- Sidewalk areas identified should be inspected for any trip hazard exceeding ¼" elevation change and corrected. Especially the areas where the sidewalk meets the back of curb.
- All stoops identified should be raised to match existing entry height at building
- All identified curbs should be raised to match existing curbs adjacent to itself.

B. Specifications of concrete raising

- Contractor is to use a Portland based product with an aggregate slurry to fill the voids beneath the panels to raise them level with surroundings
- Properly fill holes left from lifting the panels

C. Locations

- Locations will be identified on the included maps

III. Insurance

The successful Contractor shall carry the following minimum limits of insurance coverage and provide proof of such to the City. The City shall be listed as an Additional Insured.

Commercial General Liability per occurrence for bodily injury and property damage	\$1,000,000
---	-------------

Aggregate	\$2,000,000
Automobile Liability	\$1,000,000

Workers Compensation and Employers' Liability	\$500,000
--	-----------

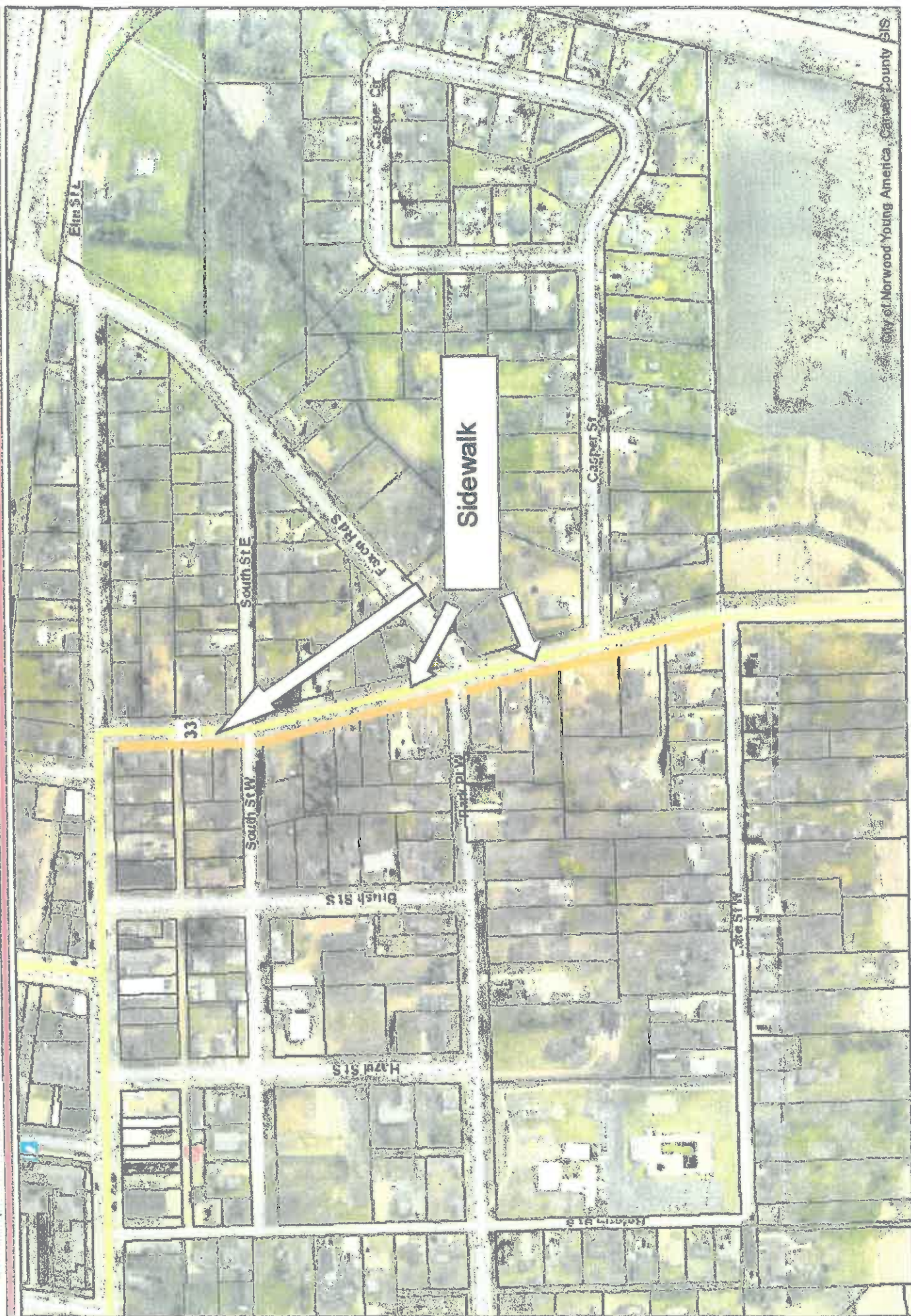
- IV. Project Completion**
The scope of work is to be completed by **December 31st, 2021**.
- V. Contractor Warranty**
Contractor shall warrant their workmanship.
- VI. Job Site Clean-up**
The Contractor is responsible for cleaning up after themselves.
- VII. Quote**
Quotes shall be provided as a whole dollar amount for the entire scope of work.
- VIII. Right to Reject Quotes**
The City reserves the right to reject any and all quotes received.
- IX. Disclaimer**
The City of Norwood Young America shall not be liable for any costs incurred by a contractor responding to this request for quotes or for any costs associated with discussions required for clarification of items related to this quote.



CITY OF NORWOOD YOUNG AMERICA

Oak St Co Rd 33 Sidewalk areas

Map Date: 9/20/2021





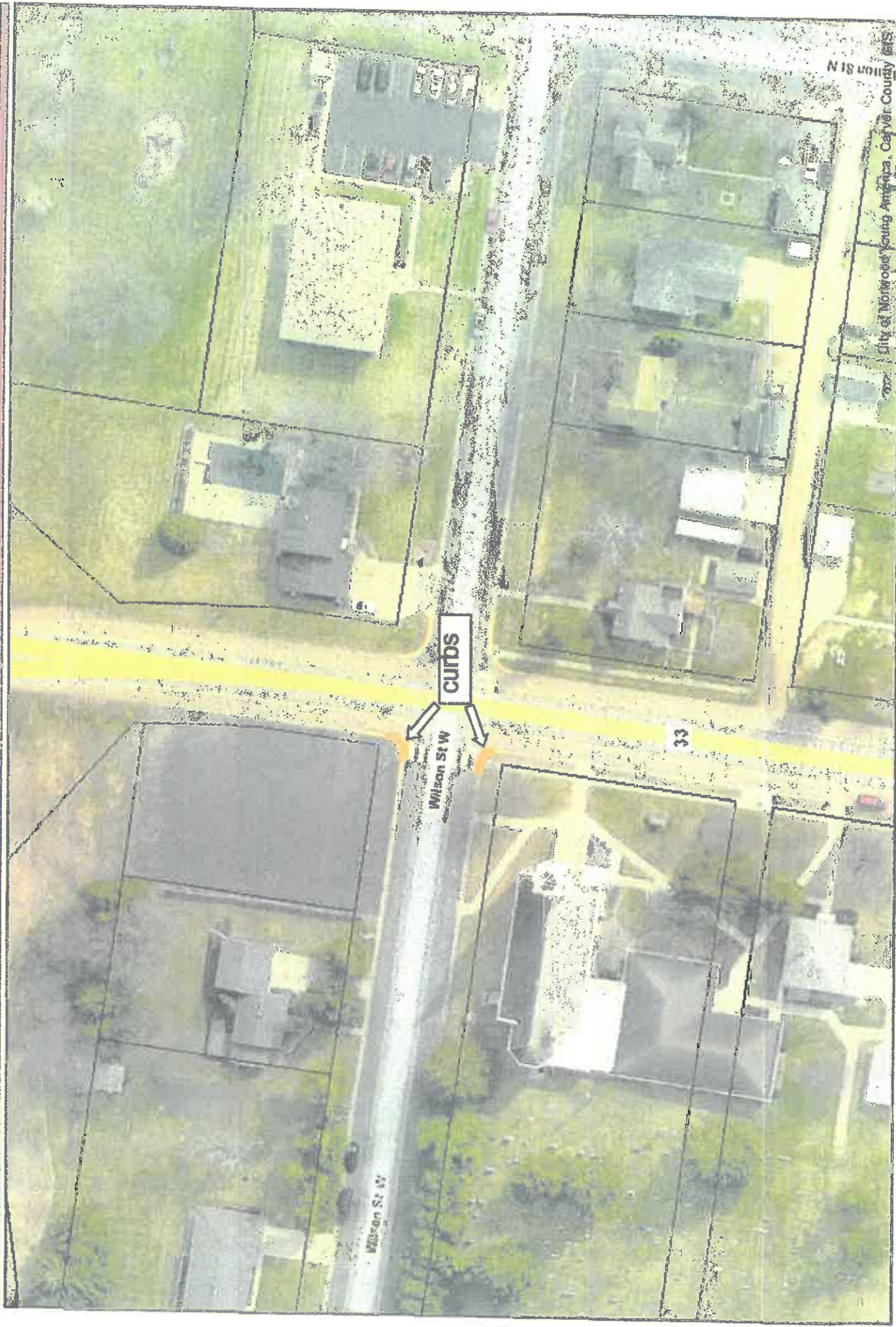


CITY OF NORWOOD YOUNG AMERICA

Wilson St Reform Co RD 33 curb areas

more than a place, it's home.

Map Date: 9/20/2021



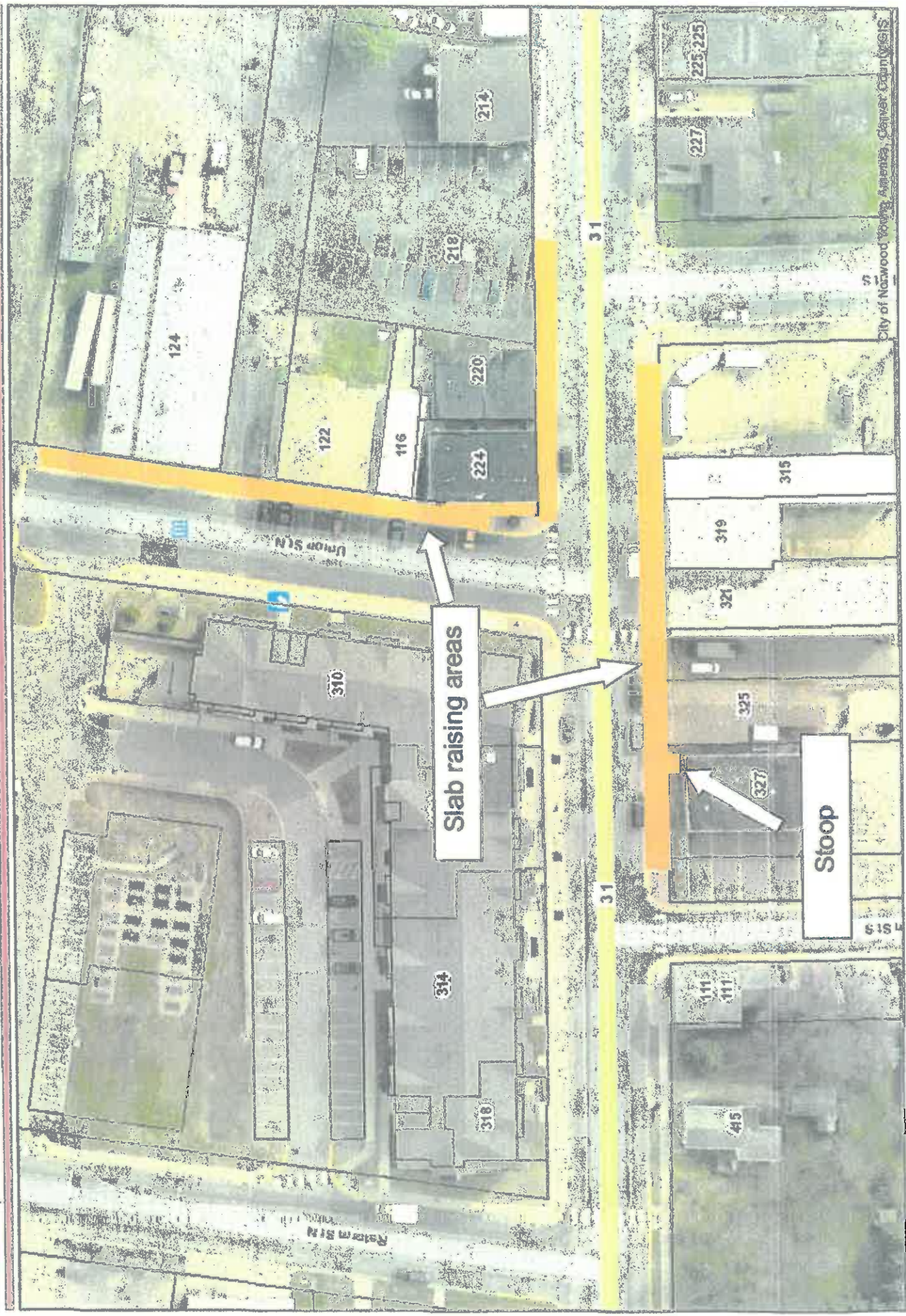
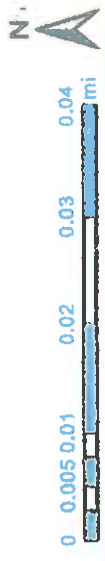
City of Norwood Young America, Carter County, IA



CITY OF NORWOOD YOUNG AMERICA

Elm St Roy Clay areas

Map Date: 9/20/2021





CITY OF NORWOOD YOUNG AMERICA

Legion/Pool Park areas

Map Date: 9/20/2021

more than a place. it's home.



CONTRACTOR'S QUOTE

Company name:

NORTHSTAR MIDJACKING & MORE

Contact Person:

CHRIS HELFER

Title:

OWNER

Address:

11400 E 280TH ST WEBSTER, MN 55088

Phone Number:

651 405 6717

Quote: \$

16,800.00

Signature:

[Signature]

Date:

9/23/2021

CONTRACTOR'S QUOTE

Company name: Cement Raising Inc.

Contact Person: Greg Liesener

Title: Owner - Estimator

Address: 7440 W. 126th St. Sewage

o: 952-949-0734

Phone Number: c: 612-919-6509

Quote: \$ 17,075.00 = 342 sections

Signature: 

Date: 9/21/21



TO: Parks and Recreation Commission Members
FROM: Tony Voigt, Public Service Director
DATE: October 19, 2021
RE: Legion Park Playground Replacement Update

It was decided at the September Parks meeting to move forward with Flagship Recreation's "Option 2" proposal. Since we will be purchasing the equipment in 2022, it was requested to research the price increase. Bailey Wolf said it would be an additional \$1,363.50 to the \$58,825 originally proposed. The total cost for Option 2 in 2022 would be \$60,188.50. Colors did not affect the price one way or the other.

The Commission had requested the warranty information pertaining to the Venti Equipment. This is the email I received from Bailey, "I have attached our equipment warranty. We do not have specific write-ups for each of our structures, but all of the equipment is covered in this PDF".

The playground equipment at the park is currently Red, Blue, and Yellow. The playground vendors had instructed the commission natural colors last much longer in the sun. For reference, the Willkommen equipment is Tan and Green and is aging very well for the set being 24 years old. Colors can be decided at a later date, but we should have this decided early in 2022 so we are ready to order. My recommendation would be to stay with the green's, brown's, and tan's.

I have included the Option 2 proposal, the shop drawings, color options and the warranty information PDF.

Suggested Motion: Motion to make a recommendation to City Council to purchase Flagship Recreation's Option 2 proposal in 2022 for the amount of \$60,188.50.

Norwood Young America

310 Elm Street West PO Box 59 – Norwood Young America, MN 55368 – (952)467-1800 – www.cityofnya.com



City of Norwood Young America
310 Elm St W P.O. Box 59
Norwood Young America, MN 55368
Tony Voigt - Public Service Director

PRELIMINARY BUDGET

	Preliminary Budget	Possible Additions	Possible Reductions	QTY	Notes
Play Equipment & Installation					
Design - Legion Park, NYA 082721, Opt2	45,871.00		-6,300.00		List Price of Equipment *Possible deduct if only Venti equipment is installed
State Contract Discount	(2,752.26)			6%	State Contract #119795
Sales Tax - if applicable	0.00				
Equipment Installation (Man Hours & Concrete for Footings)	14,282.19				Full professional installation by Landscape Structures Certified Installers
Delivery of Play equipment	400.00				estimated / final quote will be provided
Per Diem	0.00				estimated / final quote will be provided
Mobilization	500.00				
Dumpster(s) - 30 Yard	525.00				Disposal of packaging material
Site work	0.00				By Owner
Demo, Excavation & Disposal (existing container)	0.00				
Border Options	0.00			0	Standard 6" W x 12" D w/ rebar
Concrete Border Straight (LF)	0.00	1,605.93			*Possible add for new, plastic curbing
Plastic Timbers & Ramp					
Subgrade Preparation	0.00			0	Pea Rock - 3" depth - Recommended with EWF installations
Drainage Aggregate - Pea Rock (Tons)	0.00			0	Class V aggregate or recycled concrete (w/fines), delivery and installation . 4" - 6" compacted depth.
Compacted Aggregate Base (Recycled Concrete or Class V) (Tons)	0.00			0	Required for PIP & Synthetic Turf installations
Drain Tile (LF)	0.00				Perforated Corrugated Drain Tile with Sock
Surfacing Engineered Wood Fiber (EWF)					By Owner
EWF - Playground Safety Surfacing (CY)	0.00			0	IPEMA Certified Playground Surfacing - Meets the standards of ASTM, ADA & CPSC
GeoTextile Fabric (Sq. Ft.)	0.00			0	Price includes installation
Site Restoration (Sq.Ft.)	0.00			0	Top soil, seed and blanket
Payment & Performance Bonds (IF REQUIRED)	0.00				Payment & Performance Bonds. Per State Contract required on projects \$175,000+
Budget Total	58,825.93	Total Additions 1,605.93	Total Reductions -6,300.00		Total w/ Additions & Reductions 54,131.86



FLAGSHIP RECREATION
11123 UPPER 33RD ST N
LAKE ELMO, MN 55092
763-550-7860
FLAGSHIPPLAY.COM
@FLAGSHIPPLAY



THIS PLAY AREA & PLAY EQUIPMENT IS
DESIGNED FOR AGE RANGES AS NOTED
ON PLAN.

Norwood Young America, MN 55368
314 Reform St S

LEGION PARK OPTION 2

SALES
REPRESENTATIVE:
Bailey Wolf

DESIGNED BY:
JLT
08/27/2021

3/16" = 1'-0"

SHEET

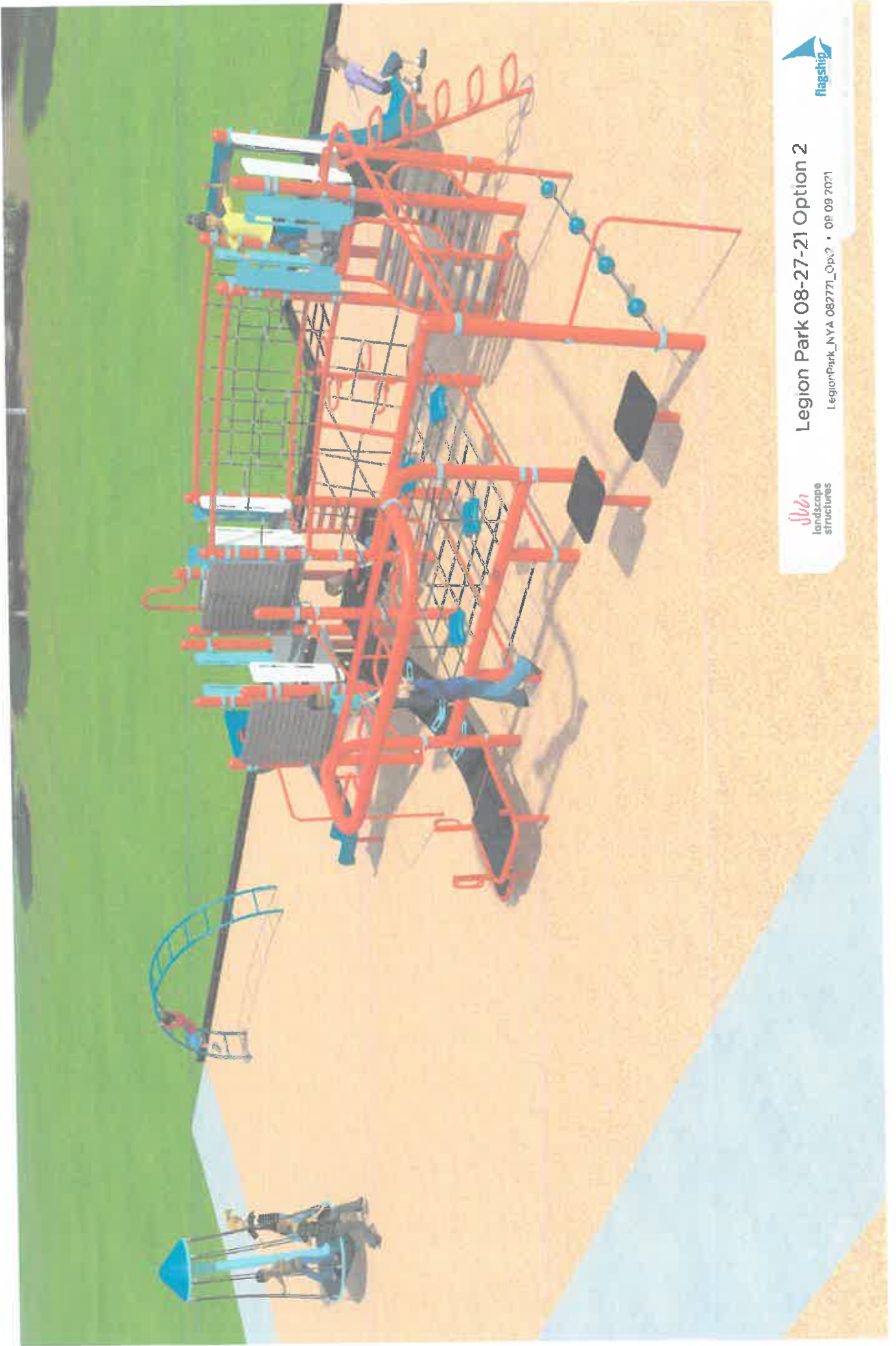
LS101



5'-10' AREA

DATE: 08/27/2021
DRAWN BY: JLT
CHECKED BY: JLT
APPROVED BY: JLT
PROJECT: LEGION PARK
SHEET: LS101





landscape
structures

Legion Park 08-27-21 Option 2

LegionPark_NYA_082721_Op2 • 08.09.2021





landscape
structures

Legion Park 08-27-21 Option 2

LegionPark_NYA 082721_Op.2 • 09.09.2021





Color Choices

Vivid colors for lively play

ProShield® Colors

For posts/arches, components and clamps, ProShield® finish combines a specially formulated primer with a high-quality, architectural-grade powdercoat top layer. The result is enhanced longevity, greater protection against UV rays, prevention from corrosion, and improved product performance. Custom colors are available for an additional charge.

Learn more about our Color Inspirations at playlsi.com/color-inspirations



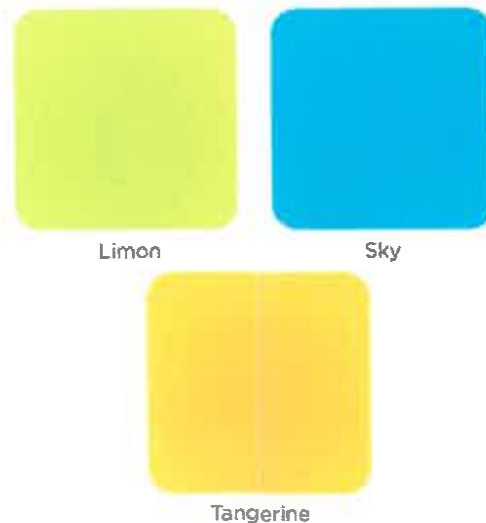
Permalene® Color Panels

Permalene® panels with a recycled core are a smart choice for your playground and the environment. Available in the 16 colors shown, the distinctive black core results from combining and recycling colored plastic—waste that would otherwise end up in landfills.



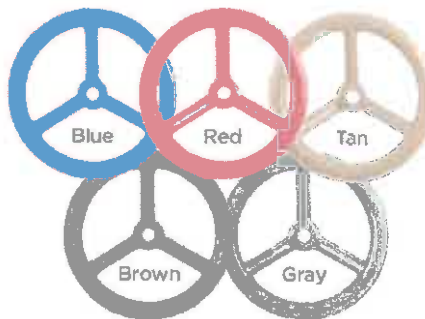
Polycarbonate Panels

Hedra® product line option. Translucent panel provides visibility into structure as well as light and color play.





Steel Decks The heaviest, thickest decks for long-lasting safety: Flange-formed from 12-gauge steel with safe, rounded corners. Reinforced with .105" x 2" ribs welded on cross for superior strength and a consistently flat surface.



TenderTuff™ Coating

For swing chains, handholds, pipe barriers, wheels, rings, etc. Insulates against temperature extremes and provides a safer grip surface compared to painted metal.



Steel-Reinforced Cables

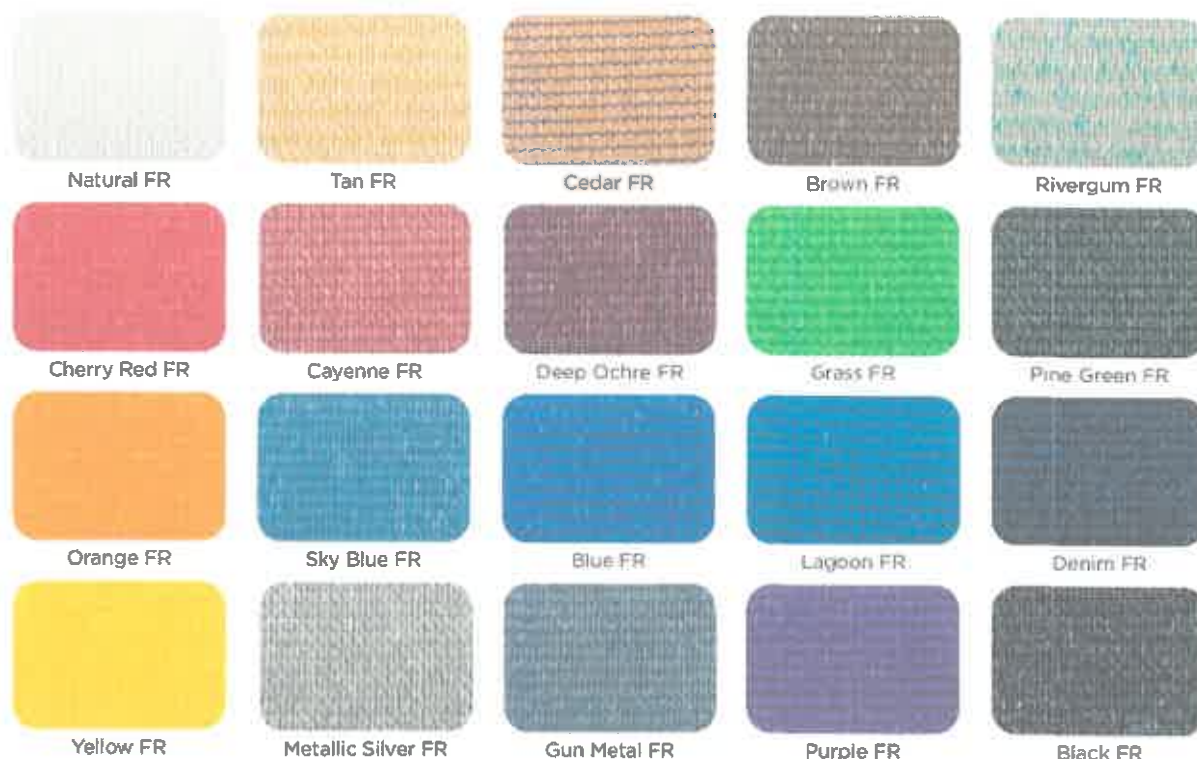
Made of tightly woven, polyester-wrapped, six-stranded galvanized-steel cable. These abrasion-resistant, color-stable cables are extremely durable and vandal resistant.

Polyethylene For slides, tunnels, roofs, etc. The heavy-duty rotationally molded polyethylene material ensures strength and durability while resisting cracking, fading and peeling. * *Limon, Leaf, Denim, Brick, Tangerine, Buttercup, Acorn and Granite* are color blends.



SkyWays® and CoolToppers® Shade Fabrics

Designed to block up to 97% of UV rays and keep playground temperatures up to 30 degrees cooler.



Pick your palette

Tour through carefully curated palettes and discover how color can tie your whole playground together. All of our colors take a cue from nature—from green trees and blue sky to minerals, birds, spices, fruits and more—to create vibrant hues that stimulate the senses and perfectly coordinate with the outdoors.



Slate • Pebble • Lagoon • Sky • Gray • Gun Metal

NEW Palette CC



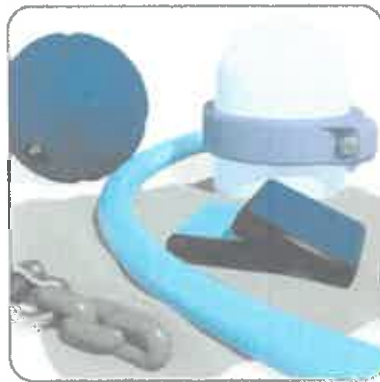
Sprout • Leaf • Limon • Buttercup • Brown • Tan

NEW Palette CB



Seafoam • Lagoon • Peacock • Tangerine • Gray

NEW Palette CA



Pebble • Slate • Sky • Denim • Gray • Metallic Silver

NEW Palette BZ



Honey • Limon • Grass • Acorn • Brown • Rivergum

NEW Palette BY



Copper • Lagoon • Sky • Gray • Metallic Silver

NEW Palette BX



Metallic Silver • Tangerine • Limon • Gray • Orange

Palette BW



Metallic Silver • Dune • Limon • Acorn • Leaf • Brown • Tan

Palette BV



Metallic Silver • Lagoon • Sky • Gray

Palette BU



Dune • Denim • Leaf • Brick • Brown

Palette BT



Valley • Lagoon • Peacock • Buttercup • Gray

Palette BS



Metallic Silver • Blue • Red

Palette BR



PaletteBQ

Yellow • Tan • Blue • Black • White • Gray • Brown



PaletteBP

Yellow • Tan • Blue • Black • White • Gray • Brown



PaletteBO

Yellow • Tan • Blue • Black • White • Gray • Brown



PaletteBN

Yellow • Tan • Blue • Black • White • Gray • Brown



PaletteBM

Yellow • Tan • Blue • Black • White • Gray • Brown



PaletteBL

Yellow • Tan • Blue • Black • White • Gray • Brown



PaletteBK

Yellow • Tan • Blue • Black • White • Gray • Brown



PaletteBJ

Yellow • Tan • Blue • Black • White • Gray • Brown



PaletteBI

Yellow • Tan • Blue • Black • White • Gray • Brown



PaletteBH

Yellow • Tan • Blue • Black • White • Gray • Brown



PaletteBG

Yellow • Tan • Blue • Black • White • Gray • Brown



PaletteBF

Yellow • Tan • Blue • Black • White • Gray • Brown



PaletteBE

Yellow • Tan • Blue • Black • White • Gray • Brown



PaletteBD

Yellow • Tan • Blue • Black • White • Gray • Brown



PaletteBC

Yellow • Tan • Blue • Black • White • Gray • Brown



Palette BB

Carbon • Lagoon • Gray
• Metallic Silver



Palette BA

Blue • Yellow • Red



Palette AZ

Blue • Limon • Green



Palette AY

Yellow • Metallic Silver • Lagoon • Gray



Palette AX

Alum • Sky • Lagoon • Brown



Palette AW

Carbon • Lagoon • Sky • Limon • Gray
• Metallic Silver



Palette AV

Lagoon • Sky • Lagoon • Gray • Dune



Palette AU

Alum • Brown • Green • Lagoon • Lagoon • Brown



Palette AT

Blue • Lagoon • Lagoon • Brown • Brown



Palette AS

Metallic Silver • Dune • Lagoon • Lagoon • Dune • Gray



Palette AR

Blue • Brown • Dune • Gray



Palette AQ

Yellow • Lagoon • Lagoon • Lagoon • Lagoon • Lagoon



Palette AP

Plum • Lagoon • Lagoon • Lagoon • Lagoon • Lagoon



Palette AO

Blue • Lagoon • Lagoon • Lagoon • Lagoon • Lagoon



Palette AN

Metallic Silver • Lagoon • Lagoon • Lagoon • Lagoon • Lagoon



Palette AM

Tangerine • Metallic Silver • Limon • Gray



Palette AL

Vanilla • Plum • Acorn • Gray • Metallic Silver



Palette AK

Metallic Silver • Denim • Brick • Gray



Palette AJ

Red • Zinc • Bronze



Palette AI

Leaf • Bronze • Acorn



Palette AH

Brown • Limon • Leaf



Palette AG

Limon • Tangerine • Denim • Gray



Palette AF

Brown • Denim • Acorn • Gray



Palette AE

Black • Yellow • Red



Palette AD

Brown • Metallic Silver • Tangerine • Gray • Blue



Palette AC

Brown • Acorn • Leaf



Palette AB

Tangerine • Plum • Limon • Gray • Metallic Silver



Palette AA

Metallic Silver • Limon • Denim • Gray

Landscape Structures Inc. ("Manufacturer") warrants that all playstructures and/or equipment sold will conform in kind and in quality to the specifications manual for the products identified in the Acknowledgment of Order and will be free of defects in manufacturing and material. Manufacturer further warrants:

100-Year Limited Warranty On all PlaySoccer™ and PlayShaper™ aluminum posts, stainless steel fasteners, clamps, beams and caps against structural failure due to corrosion, natural deterioration or manufacturing defects, and on PlayBooster™ steel posts against structural failure due to material or manufacturing defects.

15-Year Limited Warranty On all Everest™ and Wirez™ steel arches and plastic components (including TuffTubes™) including all aluminum and steel components not covered above. Mobius™ climbers, Rhapsody™ Outdoor Musical Instruments, decks and TenderFun™ platforms (except Wiggle Ladders, Chain Ladders and Swing Chairs) against structural failure due to material or manufacturing defects.

10-Year Limited Warranty On concrete products against structural failure due to natural deterioration or manufacturing defects. Does not cover minor chips, hairline cracks or efflorescence.

8-Year Limited Warranty On Aerones™ climbers and climbing cables against defects in materials or manufacturing defects.

5-Year Limited Warranty On Rhapsody™ cables and mallets against defects in materials or manufacturing defects, on polyethylene panels against defects in materials or manufacturing defects, and on bamboo panels against deterioration due to defects in materials or manufacturing defects. Does not cover damage which may be associated with the natural characteristics of bamboo aging, including but not limited to discoloration, splitting, cracking, warping or twisting, nor the formation of algae, mold and other forms of fungus-type bodies on bamboo.

3-Year Limited Warranty On all other parts, i.e. Poles® products, all swing seats and hangers, Mobius™ Climber Hangholds, Wiggle Ladders, Chain Ladders and ProBraid™ Swing Chair, Track Ride, rollers and bumpers, all rocking equipment including Sway Fun® gliders, bearing material, HealthBoat™ resistance mechanisms, Swooshs, etc., against failure due to corrosion, natural deterioration or manufacturing defects.

The environment near a saltwater coast can be extremely corrosive. Some corrosion and/or deterioration is considered "normal wear" in this environment. Product installed within 1,000 yards (457 meters) of a saltwater shoreline will only be covered for half the period of the standard product warranty, up to a maximum of five years, for defects caused by corrosion. Products installed in direct contact with saltwater or that are subjected to salt spray are not covered by the standard warranty for any defects caused by corrosion.

This warranty does not include any cosmetic issues or wear and tear from normal use of the product, or misuse or abuse of the product. It is valid only if the playstructures and/or equipment are erected to conform with Landscape Structures' installation instructions and maintained according to the maintenance procedures furnished by Landscape Structures Inc.



2021 Play Equipment Warranty

You have our word.

All the warranties commence on date of Manufacturer's invoice. Should any failure to conform to the above express warranties appear within the applicable warranty period, Manufacturer shall, upon being notified in writing promptly after discovery of the defect and within the applicable warranty period, correct such nonconformity either by repairing any defective part or parts, or by making available a replacement part within 60 days of written notification. Manufacturer shall deliver the repaired or replacement part or parts to the site free of charge, but will not be responsible for providing labor or the cost of labor for the removal of the defective part or parts, the installation of any replacement part or parts or for disposal costs of any part or parts. Replacement parts will be warranted for the balance of the original warranty.

THIS WARRANTY IS EXCLUSIVE AND IN LIEU OF ALL OTHER WARRANTIES, WHETHER EXPRESSED OR IMPLIED, INCLUDING BUT NOT LIMITED TO ANY WARRANTY OF MERCHANTABILITY OR OF FITNESS FOR A PARTICULAR PURPOSE.

The remedies hereby provided shall be the exclusive and sole remedies of the purchaser. Manufacturer shall not be liable for any direct, indirect, special, incidental or consequential damages.

Manufacturer neither assumes nor authorizes any employee, representative or any other person to assume for Manufacturer any other liability in connection with the sale or use of the structures sold, and there are no oral agreements or warranties collateral to or affecting this agreement. The warranties stated above are valid only if the structures and/or equipment are erected in conformance with Landscape Structures' installation instructions and maintained according to the maintenance procedures furnished by Landscape Structures Inc.; have been subjected to normal use for the purpose for which the goods were designed; have not been exposed to saltwater or salt spray; have not been subject to misuse, negligence, vandalism, or accident; have not been subjected to addition or substitution of parts; and have not been modified, altered, or repaired by persons other than Manufacturer or Manufacturer's designees in any respect which, in the judgement of Manufacturer, affects the condition or operation of the structures.

To make a claim, send your written statement of claim, along with the original job number or invoice number to: Landscape Structures Inc. 601 7th Street South, Delano, Minnesota, 55328-8605.

Signed: *David F. [Signature]* President Date: 01/01/2021





Terms of Sale

PRICING: Landscape Structures' list prices do not include delivery and handling charges. Prices are subject to change without notice.

TERMS: To tax-supported institutions and those with established credit: net 30 days from the date of the invoice. 1.5% per month thereafter; freight charges are prepaid and applied to the invoice.

TAXES: Landscape Structures' list prices do not include applicable taxes, if any.

WEIGHTS: Weights are approximate and may vary.

DELIVERY: If delivery of the equipment is by common carrier, and there is damage or a shortage, notify the carrier at once and sign delivery documents provided by the carrier noting the damage or shortage. Most products are delivered on large pallets and will require a forklift or similar equipment to unload as a unit on the site.

INSTALLATION: All playstructures and/or equipment are delivered unassembled and packaged with recyclable materials. For a list of factory-certified installers in your area, please contact your Landscape Structures playground consultant.

SERVICE: We have knowledgeable, qualified playground consultants throughout the world who are available to help you before, during and after the sale. Landscape Structures has exclusive design software that features all of our parts and pieces in pull-down menus. With this software, your playground consultant can design a playground layout that meets not only your needs, but ASTM and CPSC standards as well. In addition, we have a full staff of CPSI-certified designers, along with 2D and 3D drawing capabilities and custom capabilities to assist you with your playground plans.

RETURN POLICY: As an indication of our commitment to our customers, Landscape Structures will accept returns of new structures and/or new equipment purchased within 60 days of the original invoice date. Advance notification is necessary to ensure proper credit. Parts not included in this return policy are custom parts (including PlayShaper® posts), as well as used or damaged parts. A 20% restock fee plus all return freight charges will apply to all product returns. NOTE: All parts are subject to inspection upon return. Parts returned damaged may not receive a full credit. For this reason, it is important that all returned parts are properly packaged to prevent damage while in transit. Please contact your Landscape Structures playground consultant for the shipping address.

PRODUCT CHANGES: Because of our commitment to safety, innovation, and value, we reserve the right to change specifications at any time.

PLEASE CONTACT US AT:

Landscape Structures Inc.
601 7th St. South
Delano, MN 55328-8605
888.438.6574 (inside the U.S.A.)
763.972.5200 (outside the U.S.A.)
playlsi.com





TO: Parks and Recreation Commission Members
FROM: Tony Voigt, Public Service Director
DATE: October 19, 2021
RE: Pickleball Court at Friendship Park

I received a request from a citizen to install Pickleball boundary lines on to our existing Tennis Courts at Friendship Park. The request came from a citizen that enjoys the sport and would like to share with other residents in the city. They propose laying out and painting the lines themselves with no further cost incurred by the city. The individual has painted several other courts and has experience. They are not proposing to replace the net since a true Pickleball net is a few inches shorter than a traditional tennis court net.

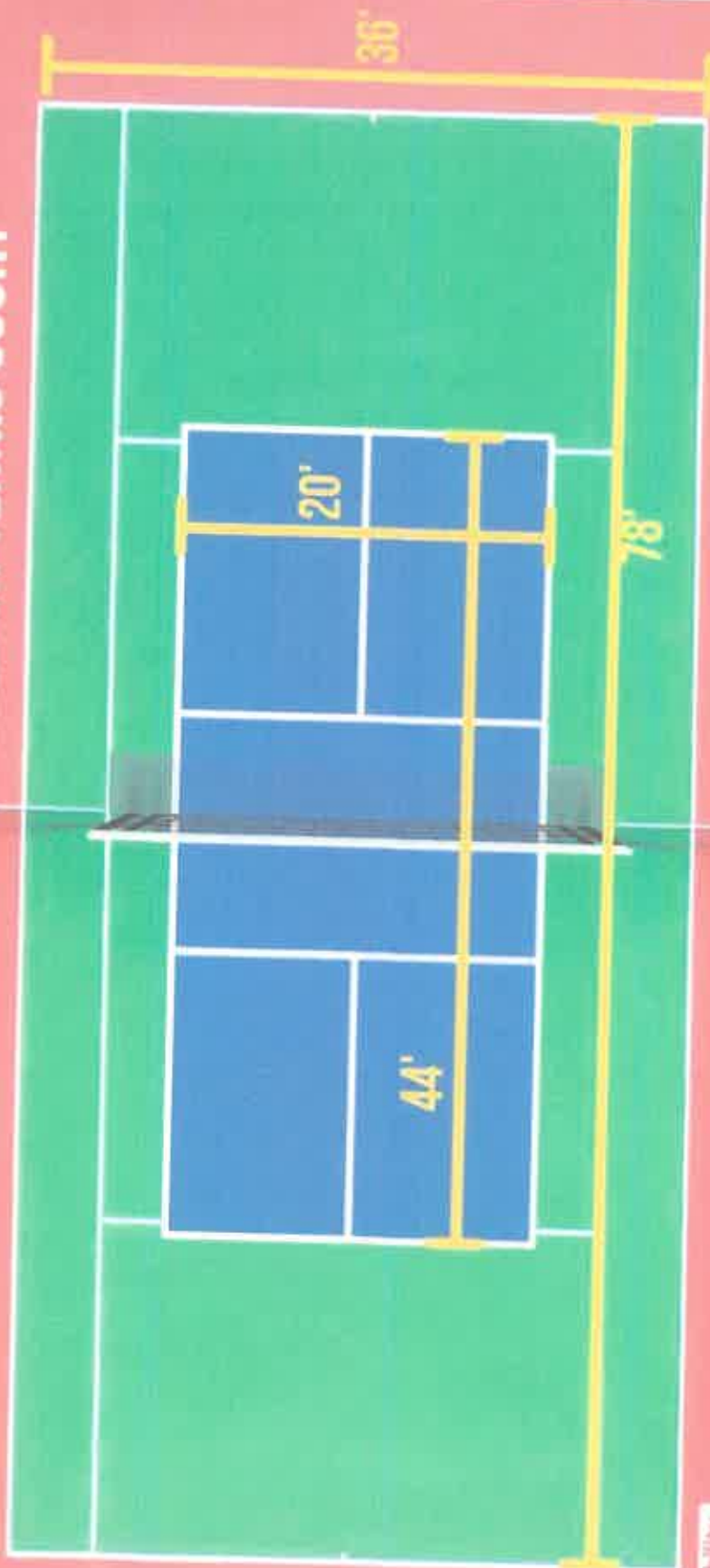
Painting Pickleball lines was brought to my attention when I met with a contactor to budget the sport surface coating at Friendship Park. He informed me at that time, his company was adding Pickleball lines to most tennis courts they resurface due to its popularity.

Staff would verify the proper materials are utilized. I would recommend signing an agreement similar to the one used for the improvements that were completed at the Sports Complex earlier this year.

Suggested Motion: Motion to approve allowing a resident to paint Pickleball lines on the existing tennis court at Friendship Park.

Norwood Young America

PICKLEBALL COURT SUPERIMPOSED ON TENNIS COURT



Pickleball
MAXIMIZE IT

PICKLEBALL
MAX