



**NORWOOD YOUNG AMERICA PARKS AND RECREATION COMMISSION**

**Tuesday August 17, 2021**

**Meeting at 4:45pm in Council Chambers**

**AGENDA**

**Members; Parks-Chair Charlie Storms—Council Member, Vice-Chair Sharilyn Feltmann, Secretary Karla Hormann, Jim Zellmann, Dan Stender, Bryan Rehnehl**  
**Planning Commission Representative; Bill Grundahl**  
**School Representative; Kelly Vossen**  
**Staff; Tony Voigt—Public Service Director**

**1. Call to Order**

**1.1. Pledge of Allegiance**

**1.2. Oath of Office**

**2. Adoption of Agenda**

**3. Approve Minutes Of 7-20-2021 meeting**

**4. Introductions, Presentations, and Public Comment**

*(Individuals may address the Parks Commission about any non-agenda item of concern. Speakers must state their name, address, and limit their remarks to three minutes. The Parks Commission will not take official action on these items but may refer the matter to staff for a future report or direct that the matter be scheduled for a future meeting agenda.)*

**5. Old Business/Goals (Updates)**

*Willkommen Memorial Park, Old Town Buildings*

Director Voigt is working with Rice Companies and Vos Construction for assistance. He is working on RFQ's and will offer additional updates at meeting time.

*Exterior Lighting at Hwy 212 Trail, Kehrler Park, and the underpass*

Xtreme Electric has all the conduit buried, lights installed, and the project is near completion. They are waiting for 2 electrical panels to complete the project. They anticipate mid to late August for completion.

*West Carver Community Pool, resurface plaster in lap pool*

Director Voigt is working on RFQ's for the solicitation of quotes. I will update the commission as we proceed on the project.

*Norwood Young America*

*South Park Hockey Rink, repair boards, add LED lighting*

Director Voigt is working on RFQ's for the solicitation of quotes. I will update the commission as we proceed on the project.

*Trail and Sidewalk Maintenance*

Director Voigt is working on RFQ's for the solicitation of quotes to complete more concrete raising and leveling. I will update the commission as we proceed on the project.

*Replace Playground Equipment at Legion Park*

**5.1 Flagship Recreation representative Bailey Wolf will be present to go over proposals and equipment.**

**5.2 Playground Replacement discussion highlights, warranty information, playground designs.**

*Bench Locations*

The concrete for all the current bench donations has been poured. Public Services staff will install the benches soon. Director Voigt will give any updates at meeting time.

**6. New Business**

**6.1. Replace trees at Kehrler Park**

**6.2. Indoor Walking Track Partnership**

**7. Miscellaneous Updates**

**8. Commissioner Report/Updates**

**9. Adjourn**

**Upcoming meetings**

<i>August 23,</i>	<i>EDA, City Council, Work Session—6:00pm</i>
<i>August 26-29,</i>	<i>Stiftungsfest, Parade is Sunday</i>
<i>September 7,</i>	<i>Planning Commission—6:00pm</i>
<i>September 8,</i>	<i>EDC Meeting—6:00pm</i>
<i>September 13,</i>	<i>City Council—6:00pm</i>

*Norwood Young America*



NORWOOD YOUNG AMERICA PARKS AND RECREATION COMMISSION

Tuesday July 20, 2021

Meeting at 4:45pm in Council Chambers  
minutes

**Members present;** Parks-Chair Charlie Storms—Council Member, Vice-Chair Sharilyn Feltmann, Secretary Karla Hormann, Jim Zellmann, Dan Stender, Bryan Rehnehl

**Planning Commission Representative present;** Bill Grundahl

**School Representative present;** Kelly Vossen

**Staff present;** Tony Voigt—Public Service Director

**Other present:** Karla and Keira Hemmann

**1. Call to Order;** CS called meeting to order at 4:46

**1.1. Pledge of Allegiance**

**2. Adoption of Agenda;** CS requested to move new business item 6.1 in front of old business, motion to adopt agenda approved with changes by SF, second by DS. Vote was 5-0 in favor

**3. Approve Minutes Of 6-15-2021 meeting;** Motion to approve minutes by JZ, second by SF. Vote was 5-0 in favor

**4. Introductions, Presentations, and Public Comment**

*(Individuals may address the Parks Commission about any non-agenda item of concern. Speakers must state their name, address, and limit their remarks to three minutes. The Parks Commission will not take official action on these items but may refer the matter to staff for a future report or direct that the matter be scheduled for a future meeting agenda.)*

**6. New Business**

**6.1. Little Library installation on City Property;** Keira Hemmann presented the information about the little library on behalf of Girls Scout Troop 16580. Keira explained this project was completed with fellow Scout member Chloe Knopik for a Silver Award with 100 plus hours invested between the two of them. Keira explained they will stock the library with books and that anyone is available to pickup, trade, or put books back in the library since it will not be locked. Keira plans to register this on the little library map and there will be a journal to sign in. Keira said the unit is built and ready to go just needs a location. CS asked how far off the road would be suggested? KH asked if the library could be placed at the 5-way stop behind the evergreen of sidewalk? CS asked if this will be closed for the winter, Keira stated no it will not be closed. SF asked if the scouts will check the library? KH stated there is a little library on 1<sup>st</sup> St NE as well as Central Ave on the North side of town and we could look on the South side around the pool park, she also asked how the scouts will continue to stock new books? Keira said they will keep stocking as needed. CS asked TV if there is a spot at Legions Park, TV stated yes by the

*Norwood Young America*

playground or the walk over bridge which both get plowed year long. SF preferred placement at the Legion Park. CS stated snow may be a problem unless located along a sidewalk, trail or road. CS stated this will need to go to council for approval. TV suggested the East side of trail in Kehrer Park. KH stated car traffic is important to the success of the library. KH stated we should have one visible and available on the Norwood side of town. CS recommended Emma St by pond or ditch near Elm St. SF said all sites would be ok. BR thought in Legion Park would be a good place by the bridge. JZ said he liked the 2 spots on Emma St and Legion Park. KH stated she never witnessed anyone grabbing books from the library on 1<sup>st</sup> St. DS liked the Legion Park Playground Area. SF agreed on the Legion Park area. KH hopes people will respect the library and they will experience no vandalism. JZ asked who maintains the library? Keira said the Girl Scouts will adopt the library and continue to maintain it. JZ asked if it will be mounted in concrete? Keira stated it will be on a 6x6 cedar post. SF asked if the post will be on the back, Keira stated on the bottom and screwed together. SF asked about weed control, CS stated the city will mow under it. Keira stated it will be 3 feet high allowing the mowers to pass under it. CS asked for a motion to place in specific location. SF made a Motion the Little Library goes at Legion Park on the North side of the playground, DS second. Vote was 6-0 in favor

## **5. Old Business/Goals (Updates)**

### *Willkommen Memorial Park, Old Town Buildings*

I am working with Rice Companies and Vos Construction for assistance. I will offer any updates I have at meeting time; TV stated he is working on the RFQ.

### *Exterior Lighting at Hwy 212 Trail, Kehrer Park, and the underpass*

Xtreme Electric has started installing the foundations and the conduit. We are on track to get the project complete; CS reported the project is coming along and should be completed around the first of August.

### *West Carver Community Pool, resurface plaster in lap pool*

I am working on RFQ's for the solicitation of quotes. I will update the commission as we proceed on the project; TV had no updates. JZ asked when is the last day of the pool, TV stated Aug 14.

CS introduced Kelly Vossen at the meeting as the new Community Education Director and the Central School Representative.

### *South Park Hockey Rink, repair boards, add LED lighting*

No Update; CS asked if we will have an RFQ ready to go in August, TV stated that is the plan.

### *Trail and Sidewalk Maintenance*

No Update; CS asked about the sidewalk on 1<sup>st</sup> Ave that was removed. CS asked if we should have made a recommendation to replace it. SF asked if the city plows it, TV stated no. KH stated we need to move forward with a plan if people keep removing sidewalk on their own. CS stated it would cost approximately \$20,000 to replace this section. CS asked TV that he brings this sidewalk removal question to Administrator Helget and add to the next City Council Work Session. TV said he would. SF said the sidewalk in the lot next to this one removed is in poor condition as well.

### *Paint the Pavilion Exterior*

## *Norwood Young America*

**5.1 Pavilion Exterior Painting Project;** *TV stated Peter Flint would be done by the end of the week with painting the Pavilion.. The commission all agreed it looked good.*

#### *Replace Playground Equipment at Legion Park*

##### **5.2 Review Flagship Recreation Proposals**

Bailey is not available that evening as she was already scheduled to be in another community for a Parks Meeting that night. I will plan on bringing updated information to the meeting for review. She is available to come to the August meeting.; *TV informed the Commission Bailey had a prior commitment and was not able to make it to the meeting. TV asked if there were certain things the commission liked about the Flagship proposal. BR likes the Venti with the ropes and the climbers promoting a lot of activity and giving the users plenty to do. KV shared concern about monkey bars and climbers can equal broken arms, but agreed the Venti has lots to do. KH stated the slides on the Venti look low. CS said the slide height looks like it may be 8' tall. CS shared his opposition to shade canopies due to the cost and maintenance. SF agreed that the shade was merely for aesthetics. The general consensus of the commission was they would like to meet with Bailey and they liked the Venti playground option. SF asked what selection from Flagship was \$46,071? CS requested we have Bailey come to the August Parks meeting and asked if we can raise the slide heights to a minimum of 8'. KH agreed the 8' slide height is what we prefer. CS asked to bring all the highlights from all the vendors to compare at the August meeting. BG asked about the \$38,000 target price and why it ended up at \$46,071? TV responded he could not remember what triggered the prices and why they had that as a budget number. SF was questioning the warranty info as well as steel vs aluminum.*

#### *Bench Locations*

**5.3 Bench location approvals;** *TV presented the information and the request in the memo. SF stated there are not many spots on the North Side. KH made a motion to approve suggested locations, SF second. Vote was 6-0 in favor*

**5.4 Allowing dogs on City Owned Athletic Fields;** *TV updated the Commission this item was passed at City Council and the public services staff will put up signs. SF asked if we need clarification in a future amendment since it says dog or cat and doesn't exclude other animals. BR asked what would the fines be or penalties? TV stated it would be treated as a petty misdemeanor. CS questioned if there should be a warning first.*

**5.5 2022 Budget Review;** *TV presented the included packet budget documents. KH questioned why the Willkommen Park playground was not on the schedule? TV thanked her for pointing it out and will make sure it gets added. TV mentioned we could add the Skate Park and the Tennis Courts if the commission agreed. CS mentioned the Dog Park will be on the future wish list. KH asked if all funds for Willkommen Park are allocated, TV answered yes that they are still in the budget. SF mentioned they did not request tax dollars the first time Old Town was built. CS added that is why we are in the situation we are with the project since design standards were not met and it will cost a lot more to repair. KH added the blacktop driveway and grade did not help the moisture issues either.*

#### **6. New Business**

#### **7. Miscellaneous Updates**

*Norwood Young America*

8. **Commissioner Report/Updates;** *BG said the Planning Commission gave praise to the Parks Commission to all they work they are getting completed. CS asked KV how she felt about her first Parks meeting, KV stated said it looks fun and exciting and was glad to be there.*
9. **Adjourn;** *KH made a motion to adjourn, second by DS 6-0 at 6:24*

**Respectfully submitted by**

---

Tony Voigt, Public Service Director

*Norwood Young America*



TO: Parks and Recreation Commission Members

FROM: Tony Voigt, Public Service Director

DATE: August 17, 2021

RE: Playground Replacement discussion highlights

---

As requested at the last meeting, I have compiled all the comments regarding the playground replacement from previous meetings.

- The colors to use for less fading and longer service life are Beige, Green or Brown, stay away from Reds or Yellows.
- The swings have been discussed plenty of times, and the consensus has been to not replace them.
- It was brought up for reference to look at Cologne Academy, the climbing equipment at Southview Elementary in Waconia and Central Elementary for ideas since they are close and nice sets.
- Director Voigt had mentioned Public Services Staff could demo and remove old set if necessary as well as remove the old wood chips and place new when the set is complete
- Flagship Recreation had mentioned they know of companies that will demo and remove the old set for no charge as well as offer assistance if we would choose to put up the new set with volunteers.
- Shade canopies have not been favored.
- Warranty has been a big topic which is included with this memo for reference.
- Minimum of 8' tall slides have been discussed.
- The Commission liked the Unity Web, Overdrive, the Spin Cup and the Transition Climber from Midwest Playscapes
- The Commission liked the Venti play set from Flagship recreation with all the climbers and lots to do.
- Flagship Recreation and Midwest Playscapes equipment use a bolt on clamp system for platform and fixture attachment to the poles. MN/WI Playgrounds equipment use cast in place attachment locations with internal threads. Director Voigt had discussed the thread failures they have experienced by the cast in place attachment from MN/WI playgrounds. His recommendation was to purchase a set with the clamp on attachment points to add strength, reliability and versatility.

*Norwood Young America*



By continuing to use the playlsi.com website, you agree to the use of cookies. Further information on cookies can be found in our updated [Privacy Policy](#).

✓ Yes, I agree

[Visit a Playground](#)

[Contact](#)



[Home](#) > [Our Story](#) > [Company](#) > [Warranty](#)

## Warranty

### Share This Page

[Email](#)

[Facebook](#)

[Twitter](#)

[Google+](#)



## You Have Our Word

More than just a contract, our warranty is our personal commitment that you'll be satisfied with your purchase now and far, far into the future.

As an employee-owned company, we take great pride in the quality of everything we make. And we're so confident that you'll be delighted with your purchase that we back our products with the most comprehensive long-term warranties in the industry. It's just one more way we show how much we care about our customers and communities.

## 2021 Playground Equipment Warranty



All the warranties commence on date of Manufacturer's invoice. Should any failure to conform to the above express warranties appear within the applicable warranty period, Manufacturer shall, upon being notified in writing promptly after discovery of the defect and within the applicable warranty period, correct such nonconformity either by repairing any defective part or parts, or by making available a replacement part within 60 days of written notification. Manufacturer shall deliver the repaired or replacement part or parts to the site free of charge, but will not be responsible for providing labor or the cost of labor for the removal of the defective part or parts, the installation of any replacement part or parts or for disposal costs of any part or parts. Replacement parts will be warranted for the balance of the original warranty.

THIS WARRANTY IS EXCLUSIVE AND IN LIEU OF ALL OTHER WARRANTIES, WHETHER EXPRESSED OR IMPLIED, INCLUDING BUT NOT LIMITED TO ANY WARRANTY OF MERCHANTABILITY OR OF FITNESS FOR A PARTICULAR PURPOSE.

The remedies hereby provided shall be the exclusive and sole remedies of the purchaser. Manufacturer shall not be liable for any direct, indirect, special, incidental or consequential damages.

Manufacturer neither assumes nor authorizes any employee, representative or any other person to assume for Manufacturer any other liability in connection with the sale or use of the structures sold, and there are no oral agreements or warranties collateral to or affecting this agreement. The warranties stated above are valid only if the structures and/or equipment are erected in conformance with Landscape Structures' installation instructions and maintained according to the maintenance procedures furnished by Landscape Structures Inc.; have been subjected to normal use for the purpose for which the goods were designed; have not been exposed to saltwater or salt spray; have not been subject to misuse, negligence, vandalism, or accident; have not been subjected to addition or substitution of parts; and have not been modified, altered, or repaired by persons other than Manufacturer or Manufacturer's designees in any respect which, in the judgement of Manufacturer, affects the condition or operation of the structures.

To make a claim, send your written statement of claim, along with the original job number or invoice number to:

Landscape Structures Inc.  
601 7th Street South,  
Delano, Minnesota, 55328-8605  
USA

Landscape Structures Inc. ("Manufacturer") warrants that all playstructures and/or equipment sold will conform in kind and in quality to the specifications manual for the products identified in the Acknowledgment of Order and will be free of defects in manufacturing and material. Manufacturer further warrants:

**100-Year Limited Warranty:** On all PlayBooster® and PlayShaper® aluminum posts, stainless steel fasteners, clamps, beams and caps against structural failure due to corrosion/natural deterioration or manufacturing defects, and on PlayBooster steel posts against structural failure due to material or manufacturing defects.

**15-Year Limited Warranty:** On all Evos® and Weevos® steel arches, all plastic components (including TuffTimbers™ edging), all aluminum and steel components not covered above, Mobius® climbers, Rhapsody® Outdoor Musical Instruments, decks and TenderTuff™ coatings (except Wiggle Ladders, Chain Ladders and Swing Chain) against structural failure due to material or manufacturing defects.

**10-Year Limited Warranty:** On concrete products against structural failure due to natural deterioration or manufacturing defects. Does not cover minor chips, hairline cracks or efflorescence.

**8-Year Limited Warranty:** On Aeronet® climbers and climbing cables against defects in materials or manufacturing defects.

**5-Year Limited Warranty:** On Rhapsody® cables and mallets against defects in materials or manufacturing defects, on polycarbonate panels against defects in materials or manufacturing defects, and on bamboo panels against delamination due to defects in materials or manufacturing defects. Does not cover damage which may be associated with the natural characteristics

of bamboo aging, including but not limited to discoloration, splitting, cracking, warping or twisting, nor the formation of algae, mold and other forms of fungal-type bodies on bamboo.

**3-Year Limited Warranty:** On all other parts, i.e.: Pulse® products, all swing seats and hangers, Mobius climber handholds, Wiggle Ladders, Chain Ladders and ProGuard™ Swing Chain, Track Ride trolleys and bumpers, all rocking equipment including Sway Fun® gliders, belting material, HealthBeat® resistance mechanisms, Seesaws, etc., against failure due to corrosion/ natural deterioration or manufacturing defects.

The environment near a saltwater coast can be extremely corrosive. Some corrosion and/or deterioration is considered "normal wear" in this environment. Product installed within 500 yards (457 meters) of a saltwater shoreline will only be covered for half the period of the standard product warranty, up to a maximum of five years, for defects caused by corrosion. Products installed in direct contact with saltwater or that are subjected to salt spray are not covered by the standard warranty for any defects caused by corrosion.

This warranty does not include any cosmetic issues or wear and tear from normal use of the product, or misuse or abuse of the product. It is valid only if the playstructures and/or equipment are erected to conform with Landscape Structures' installation instructions and maintained according to the maintenance procedures furnished by Landscape Structures Inc.





# Limited Warranty

Playworld Systems, Inc. warrants its products against structural failure due to defects in materials and workmanship for the warranty periods and material categories prescribed below.

**1. LIMITED WARRANTY FOR AS LONG AS YOU OWN THE PRODUCT:** Steel deck support posts, stainless steel hardware, clamps, deck hangers, post caps, and cast aluminum parts, except as otherwise specified below.

**2. LIMITED TWENTY-FIVE (25) YEAR WARRANTY:** Spring Mates® aluminum castings.

**3. LIMITED FIFTEEN (15) YEAR WARRANTY:** Perforated steel decks and stairs, steel rails, stationary weldments, rotationally-molded and sheet plastic components, Playwood recycled plastic lumber, roof panels, and stainless steel slides, except as otherwise specified below.

**4. LIMITED TEN (10) YEAR WARRANTY:** Fiberglass signage, accessible swing seats, Fun Centers™, FirstPlay™ play structures, pre-cast PolyFiberCrete® or reinforced concrete products, Timber Stacks™ Robinia timbers and galvanized hardware, fabric shade steel frames and Shadesure and Colourshade FR fabrics (Note Exception: Limited Five (5) Year Warranty on fabrics in colors Red, Yellow, Electric Purple, Zesty Lime, Cinnamon, and Olive.)

**5. LIMITED FIVE (5) YEAR WARRANTY:** Steel reinforced cable net and rope fittings and connections (Note Exception: Warranty does not cover normal wear and tear such as fraying or fading of cable coating), PlaySimple® play structures, DropZone Tower™, LiveWire Zip Line™ (except as otherwise specified below), AeroGlider™, Border Timbers™, flex treads, wood and polycarbonate panels, Eco-Armor coating and PVC coating (against cracking and peeling), site amenities (i.e. benches, tables, litter receptacles, and bike racks), GFRP (Glass Fiber Reinforced Polymer) products, and motion/moving play components and parts.

**6. LIMITED THREE (3) YEAR WARRANTY:** Steel coil and C springs, fist webbing nets (excluding normal wear and tear), electronic panel speakers, sound chips, and circuit boards.

**7. LIMITED ONE (1) YEAR WARRANTY:** NEOS®, electronic based play products, swing chain, swing clevises, swing galvanized attachment hardware, molded rubber bumpers, handholds, swing seats, and any other materials or custom products not covered above, all high wear items such as trolleys, cables, wheels, and bumper stops related to rail and cable ride products. (\*For NEOS only, an extended 3-year warranty is available for purchase, providing 4 years of cumulative coverage.)

**BUYER'S REMEDY:** If any products prove defective or non-conforming under normal use and within the above-prescribed warranty periods and material categories, Buyer must promptly notify Playworld Systems, Inc. in writing at 1000 Buffalo Road, Lewisburg, PA 17837 USA. Playworld may elect to inspect the alleged defect at Buyer's site or at Playworld's facility. Buyer shall not return products to Playworld unless authorized by Playworld to do so. Authorized returns must be properly packaged and shipped prepaid and insured, at Buyer's expense. Upon verification of warranty coverage, Playworld may elect, in its sole discretion, to repair defective or non-conforming products, or replace them by delivering products or parts free of charge to the site. Playworld's limited warranties do not cover the cost of labor to remove defective or non-conforming parts or to install repaired or replacement parts. By use of these limited

warranties, Buyer accepts their terms and limitations, and waives any rights it would otherwise have to claim or assert that such warranties fail of their essential purpose. Buyer agrees that venue for any court action to enforce these limited warranties shall be in Union County in the State of Pennsylvania.

**LIMITATIONS:** All warranty periods begin on the date of Playworld's invoice. Repaired and/or replacement parts are warranted only for the balance of the original limited warranty period. Warranties extend only to the original Buyer and user for products purchased from Playworld or a Playworld authorized reseller, and are not transferable.

Warranties apply only to Playworld products that are erected and installed in conformance with Playworld installation instructions, and that are maintained and inspected in conformance with Playworld maintenance and operational instructions.

Warranties specifically do not cover Playworld products:

- for cosmetic damage or flaws occurring under normal use, such as surface scratches, minor chips, hairline cracks, dents, marring, efflorescence, color fade, discoloration, corrosion/rust, fraying, or warping of recycled plastic lumber;
- that have been modified, altered, or repaired by unauthorized third parties;
- that have not been used as designed or intended, or misused;
- to which non-Playworld parts have been added or substituted;
- that have been removed from their original location and re-installed elsewhere;
- for changes in appearance of natural materials over time or cosmetic defects such as checks or splits in timber components;
- or that have been damaged due to excessive wear and tear, vandalism, abnormal use, abuse, negligence, environmental factors (such as wind-blown sand, salt spray, or airborne emissions from industrial sources), extreme weather (such as hail, flooding, lightning, tornados, sandstorms, earthquakes, or wind storms), and acts of God.

Playworld does not warrant that any particular color will be available for any specific period of time, and reserves the right, in its sole discretion, to discontinue any color for any reason.

**THE FOREGOING LIMITED WARRANTY IS THE SOLE AND EXCLUSIVE WARRANTY FOR SELLER'S PRODUCTS, AND IS IN LIEU OF ALL OTHER WARRANTIES, EXPRESS OR IMPLIED, IN LAW OR IN FACT. SELLER SPECIFICALLY DISCLAIMS ALL OTHER WARRANTIES, EXPRESS OR IMPLIED, INCLUDING, WITHOUT LIMITATION, ALL IMPLIED WARRANTIES OF MERCHANTABILITY AND FITNESS FOR A PARTICULAR USE OR PURPOSE, AND ANY IMPLIED WARRANTIES ARISING OUT OF COURSE OF DEALING OR PERFORMANCE OR TRADE USAGE. SELLER SHALL NOT BE LIABLE FOR ANY INCIDENTAL, CONSEQUENTIAL, EXEMPLARY, SPECIAL, OR PUNITIVE DAMAGES, OR ANY LOSS OF REVENUE, PROFIT, OR USE ARISING OUT OF A BREACH OF THIS WARRANTY OR IN CONNECTION WITH THE SALE, INSTALLATION, MAINTENANCE, USE, OPERATION, OR REPAIR OF ANY PRODUCT. IN NO EVENT WILL SELLER BE LIABLE FOR ANY AMOUNT GREATER THAN THE PURCHASE PRICE OF A DEFECTIVE PRODUCT.**

Playworld Systems, Inc. continually improves play equipment to better serve our customers and therefore reserves the right to change the design specifications without notice.

Lewisburg, PA

800.233.8404

+1.570.522.9800

Playworld.com



We are committed to improving your browsing experience by continuing to use this website. You agree to the terms outlined in our Privacy Policy, and to the receipt of targeted communications through our marketing platforms. We do not sell your personal information, and only obtain personal information with your consent. For more details, please refer to our Privacy Policy (<https://playpower.com/privacy-policy/>).

world guarantees the quality of every product we make and every playground we build. We set the standard for lifetime warranties, and many of our products come with the

warranties in the industry.

Yes, I agree



## Warranty Coverage



### Play Systems and Play Products

- Lifetime limited warranty on PowerScape®, PrimeTime®, IONiX®, and Xscape® uprights.
- Lifetime limited warranty on all hardware.
- Lifetime limited warranty on GameTime PowerScape Tru-Loc® connections.
- Lifetime limited warranty on IONiX®, PrimeTime® and Xscape® bolt-through connections.
- Fifteen-Year limited warranty on metal decks, pipes, rungs, rails and loops.
- Fifteen-Year limited warranty on rotationally molded products.

• Twenty-Year limited warranty on Timber Deck® & Timbers recycled plastic lumber.

• Five-Year limited warranty on nylon-covered cable net climbers and components.

• Five-Year limited warranty on HDPE panels.

• Ten-Year limited warranty on pressure-treated pine and redwood products.

• Ten-Year limited warranty on site furnishings.

• Ten-Year limited warranty on integrated GTShade® products.

• Ten-Year limited warranty on fiberglass and DHPL signage.

• Five-Year limited warranty on Super Seats™.

• Three-Year limited warranty on SaddleMates® rubber and "C"-springs.

• One-Year limited warranty on all other GameTime products.

• Three-Year limited warranty on Hand Sanitizer Lockbox



## Fitness Products and Challenge Course

• Lifetime warranty on uprights and hardware

• Ten-Year limited warranty on stationary GTfit posts, bars, welds and metal accessories (excluding cycle parts)

• Ten-Year limited warranty on HPL Instructional Signage

• Five-Year limited warranty on Net Climbers

• Five-Year limited warranty on rotationally-molded components

• Five-Year limited warranty on stainless damper module and aluminum cycle cover

• Five-Year limited warranty on HDPE panels.

• Two-Year limited warranty on Challenge Course timing systems (requires GT Impax surfacing)

• Two-Year limited warranty on bearings, damper, plastics, rubber parts and some cycle parts, including pedal and shaft

• One-Year limited warranty on Recumbent Cycle belt (excludes cosmetic damage or defects)





# Custom and Themed Products

- Five-Year limited warranty on glass fiber reinforced concrete (GFRC) PlayWorx® structures
- Five-Year limited warranty on glass fiber reinforced polymer (GFRP) Tuff Forms® sculptures
- Five-Year limited warranty on custom-routed HDPE panels.

## VistaRope Products

- Lifetime Warranty Uprights and hardware, excluding cosmetic damages or defects
- 15 Year Limited Warranty on Punched Steel, Pipes, Rails, Loops and Rungs
- 15 Year Limited Warranty on Rotomolded Polyethylene Components
- 15 year limited warranty on nylon bearings and ring junction pieces excluding cosmetic damages or defects
- 10 year limited warranty on cable breakage, excluding cosmetic damages or defects
- 5 year limited warranty on rubber seat and rubber mats for net events, excluding cosmetic damages or defects
- 5 year limited warranty on premature wear of nylon cables, excluding cosmetic damages or defects

## General Warranty Details

- ✓ For the purpose of this warranty, “lifetime” encompasses no specific term of years, but rather that seller warrants to its original customer for as long as the original customer owns the product and uses the product for its intended purpose that the product and all its parts will be free from defects in material and manufacturing workmanship.



Minnesota / Wisconsin Playground  
 5101 Highway 55, Suite 6000  
 Golden Valley, Minnesota 55422  
 Ph. 800-622-5425 | 763-546-7787  
 Fax 763-546-5050 | dan@mnwiplay.com

08/27/2020  
 Quote #100699-01-02

CONSULTANT: DAN LANES

## Legion Park - D10312L - Equipment

Quantity	Part #	Description	Unit Price	Amount
		(2) 8910 – Belt Seat 3 1/2"Od(8910)		
		(1) 12584 – Ada Primetime Swing Aab, 3 1/2" Od		
		(1) 12583 – Ada Primetime Swing Frame, 3 1/2" Od		
1	EWf-12L	EWFLGE - Engineered Wood Fiber Safety Surfacing, 304 CY at 12" depth	\$6,847.00	\$6,847.00
4	161290	GameTime - Geo-Textile 2250 Sqft Roll	\$681.00	\$2,724.00
1	178749	GameTime - Owner's Kit	\$58.00	\$58.00
			<b>Sub Total</b>	<b>\$65,661.00</b>
			<b>Grant</b>	<b>(\$25,282.00)</b>
			<b>Freight</b>	<b>\$4,066.65</b>
			<b>Total</b>	<b>\$44,445.65</b>

### Comments

Owner must provide open and clear access to the site. Owner must prepare and provide a flat and level site prior to the installation of play equipment and safety surfacing.

This quotation is subject to current Minnesota/Wisconsin Playground (MWP) policies as well as the following terms and conditions. Our quotation is based on shipment of all items at one time to a single destination, unless noted, and changes are subject to price adjustment. Purchases in excess of \$1,000.00 to be supported by your written purchase order made out to Minnesota/Wisconsin Playground.

Each quote is handled on a per order/project basis. Unless a long-term agreement is in place between purchaser and MWP, terms and conditions of this quotation shall be as outlined herein with no other requirements applicable.

This quotation is subject to policies in the current Gametime Park and Playground catalog and the following terms and conditions. Our quotation is based on shipment of all items at one time to a single destination, unless noted, and changes are subject to price adjustment. Purchases in excess of \$1,000.00 to be supported by your written purchase order made out to Gametime, c/o Minnesota/Wisconsin Playground.

Each quote is handled on a per order/project basis. Unless a long-term agreement is in place between purchaser and GameTime, terms and conditions of this quotation shall be as outlined herein with no other requirements applicable.

Pricing: f.o.b. factory, firm for 30 days from date of quotation. A tax-exempt certificate is needed at time of order entry for all orders whether from tax-supported government agencies or not. Sales tax, if applicable, will be added at time of invoice unless a tax exempt certificate is provided at time of order entry.

Payment terms: payment in full, check submitted with order.

Unless already on file, please include a tax exempt certificate upon order entry whether a tax supported government agency or other.

Shipment: order shall ship within 45 - 60 days after GameTime's receipt and acceptance of your purchase order, color selections, approved submittals, and receipt of deposit, if required. Receipt of anything other than what is stated herein will not constitute an order and therefore no materials will be placed into production nor installation, if required, will be scheduled.

EWf Shipment: order shall deliver within 14 - 21 days after our receipt and acceptance of your purchase order as well as schedule and weather allowing. Bulk material will ship via semi-truck/trailer with a live floor system in trailer which allows driver to deposit EWF directly onto a specific area provided proper access is available. Driver has final say whether the site has proper access. Site restoration is not included and will be the responsibility of the owner/owner's representative. Road restrictions may be in effect and cause delays depending on time of year.







Minnesota / Wisconsin Playground  
5101 Highway 55, Suite 6000  
Golden Valley, Minnesota 55422  
Ph. 800-622-5425 | 763-546-7787  
Fax 763-546-5050 | dan@mnwplay.com

08/27/2020  
Quote #100689-01-03

CONSULTANT: DAN LANES

## Legion Park - D10312L - Installation

City of Norwood Young America  
Attn: Tony Voigt  
310 Elm St W  
Norwood Young America, MN 55368  
Phone: 952-467-1830  
tvoigt@cityofnuya.com

Ship to Zip 55368

Quantity	Part #	Description	Unit Price	Amount
1	INSTALL	Install - Installation of Engineered Wood Fiber Safety Surfacing- Includes geo fabric install	\$5,989.00	\$5,989.00
1	INSTALL	Install - Installation of Play Equipment- Includes concrete footings and packaging material disposal in 20yd dumpster. City/Owner is responsible for site work, old equipment removal and border work.	\$15,155.35	\$15,155.35
			<b>Sub Total</b>	<b>\$21,144.35</b>
			<b>Total</b>	<b>\$21,144.35</b>

### Comments

Owner must provide open and clear access to the site. Owner must prepare and provide a flat and level site prior to the installation of play equipment and safety surfacing.

This quotation is subject to current Minnesota/Wisconsin Playground (MWP) policies as well as the following terms and conditions. Our quotation is based on shipment of all items at one time to a single destination, unless noted, and changes are subject to price adjustment. Purchases in excess of \$1,000.00 to be supported by your written purchase order made out to Minnesota/Wisconsin Playground.

Each quote is handled on a per order/project basis. Unless a long-term agreement is in place between purchaser and MWP, terms and conditions of this quotation shall be as outlined herein with no other requirements applicable.

This quotation is subject to policies in the current Gametime Park and Playground catalog and the following terms and conditions. Our quotation is based on shipment of all items at one time to a single destination, unless noted, and changes are subject to price adjustment. Purchases in excess of \$1,000.00 to be supported by your written purchase order made out to Gametime, c/o Minnesota/Wisconsin Playground.

Each quote is handled on a per order/project basis. Unless a long-term agreement is in place between purchaser and GameTime, terms and conditions of this quotation shall be as outlined herein with no other requirements applicable.

Pricing: f.o.b. factory, firm for 30 days from date of quotation. A tax-exempt certificate is needed at time of order entry for all orders whether from tax-supported government agencies or not. Sales tax, if applicable, will be added at time of invoice unless a tax exempt certificate is provided at time of order entry.

Payment terms: payment in full, check submitted with order.

Unless already on file, please include a tax exempt certificate upon order entry whether a tax supported government agency or other.

Shipment: order shall ship within 45 - 60 days after GameTime's receipt and acceptance of your purchase order, color selections, approved submittals, and receipt of deposit, if required. Receipt of anything other than what is stated herein will not constitute an order and therefore no materials will be placed into production nor installation, if required, will be scheduled.

EWf Shipment: order shall deliver within 14 - 21 days after our receipt and acceptance of your purchase order as well as schedule and weather allowing. Bulk material will ship via semi-truck/trailer with a live floor system in trailer which allows driver to deposit EWf directly onto a specific area provided proper access is available. Driver has final say whether the site has proper access. Site restoration is not included and will be the responsibility of the owner/owner's representative. Road restrictions may be in effect and cause delays depending on time of year.



# Legion Park

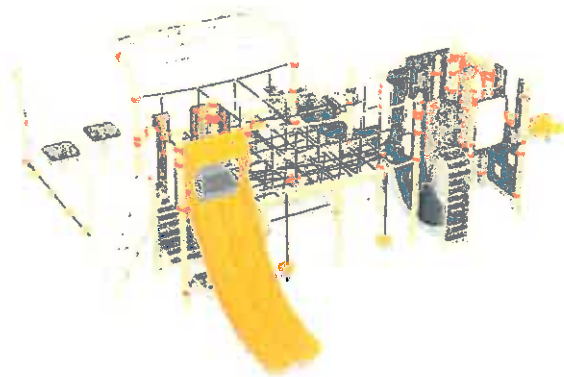
Norwood Young America, Minnesota



**MINNESOTA • WISCONSIN**  
**PLAYGROUND**

Plan D10312L

**GameTime**  
© 1997-2000 GameTime

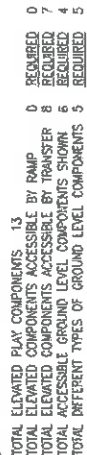


Product Line: Smart Play®  
Age Range: 5-12 Years  
Suggested Retail Price: \$38,289  
Footprint Required: 46x40  
Weight: 3,794 lbs.  
Height: 87"  
Safety Standard(s): ASTM, CPSC  
Installation Type: Direct Bury  
Material: Aluminum

State Contract Price - \$35,992  
Freight - \$400  
Mobilization - \$500  
Installation - \$9,179

Components: Venti®  
Total - \$46,071



TOTAL SQUARE FOOTAGE  
1244 SQ.FT.

DESIGNED BY:

COMPONENT: 5/15/2020  
LABORATORY STRUCTURE: 40C  
601 7th STREET SOUTH - P.O. BOX 194  
DELAWARE, 19806-0194  
TEL: 1-800-325-0035 FAX: 1-757-875-0861

[illegible]

SYSTEM TYPE:  
Smart Play

DRAWING #:  
3986

Landscape Structures

Design  
3986













# MIDWEST PLAYSCAPES

8632 Eagle Creek Circle, Savage, MN 55378  
www.MIDWESTPLAYSCAPES.com

direct: 952.895.8888  
fax: 952.895.8889  
toll free: 800.747.1452

playscapes@earthlink.net

## Quotation



BETTER BUSINESS BUREAU

**Project:** City of Norwood Young America / Legion Park

**Contact:** Tony Voigt

**Ship To:** 310 Elm St W  
NYA, MN 55368

**Email:** [tvoigt@cityofnya.com](mailto:tvoigt@cityofnya.com)

**Phone:** 952-461-1830

**Fax:**

**Bill To:** PO Box 59  
NYA, MN 55368

**Shipping Contact Name:**

**Date:** 6/8/2021

Qty	Design/Item #	Description	Total
1	21-5788A	Playworld Commercial Play Equipment Per Design #21-5788A Price includes: Playstructure, Medium Unity Web and (3) Stationary Buttons	\$ 56,829.00
1		Discount	\$ (9,660.00)

Subtotal \$ 47,169.00

Freight \$ 2,816.00

Sales Tax \$

Local Sales Tax \$

**Total \$ 49,985.00**

Tax Exempt # \_\_\_\_\_ \* Please provide certificate

### Options


Add \$3,889 for a (3) Bay Swing Set including seats (per Design #21-5788A) (list price \$4685 / disc \$785).

Add \$723 for a Spin Cup (per Design #21-5788A) (list price \$871 / disc \$148).

Add \$3,258 for a OverDrive (per Design #21-5788A) (list price \$3923 / disc \$665).

Add \$8,600 for Installation of the Playstructure, Medium Unity Web and 3 Stationary Buttons.

**NOTE:** If customer chooses to purchase any of the three play equipment options (3 Bay Swing, Spin cup or Overdrive) Installation (a \$1,780 total value) of those options will be free.

**NOTE:** Customer is responsible for unloading, freight inventory, storage, site prep, removal of existing equipment, excavation, drainage system, safety surfacing and disposal of packaging material.

**NOTE:** Any Insurance requirements above \$1,000,000 General Liability will be subject to a surcharge

**NOTE: UNLESS OTHERWISE NOTED,** prices shown are material only. They **DO NOT** include: assembly, installation, border, safety surfacing, drain tile, geotextile fabric, removal of existing equipment, site preparation, excavation or site restoration, unloading of equipment, disposal of packaging material, storage of equipment, additional insurance and bonding would be extra, unless otherwise stated above. If playground equipment or materials are stored off site, customer is responsible for transporting equipment to job site.

Prices firm for 30 days, subject to review thereafter. Our terms are net 30. A finance charge of 1.5% will be imposed on the outstanding balance unpaid for more than 30 days after the shipment of materials. Equipment shall be invoiced separately from other services and shall be payable in advance of those services and project completion. Retainage not accepted. Once customer has signed quotation, your order cannot be changed or canceled. Please allow 3 to 4 weeks for delivery after receipt of order. Standard manufacturing design, specification, and construction apply unless noted otherwise. Customer is responsible for the identification and marking of all underground utilities (public or private) to include drain tile and sprinkler systems. Area must be accessible to Bobcat and other equipment necessary for installation or additional fees will be charged. Freight quote is based on customer unloading equipment and checking in all equipment for any missing parts. If product is refused by customer upon delivery for any reason (unless damaged), without prior authorization from Midwest Playscapes, Inc., the customer agrees to pay 20% restocking fee plus freight charges. Price does not include prevailing wages, unless otherwise noted. If we can be of Other Assistance, please feel free to contact us.

Signed:

*Dominic Dvorak*

Dominic Dvorak

Accepted \_\_\_\_\_

Date: \_\_\_\_\_

Printed Name: \_\_\_\_\_



# Legion Park

Norwood Young America, MN

21-5788A.MID

Sales Representative

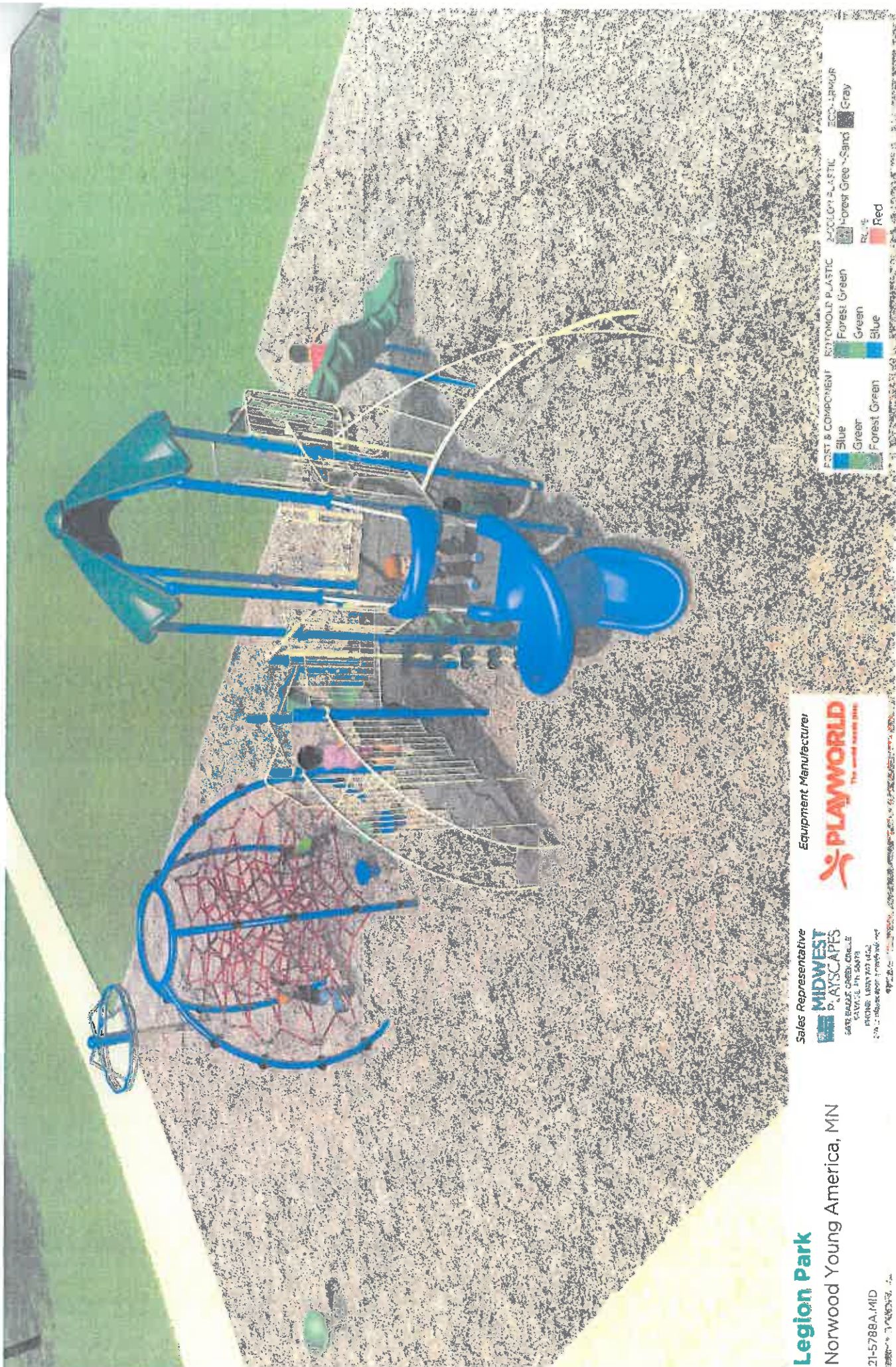
**MIDWEST**  
PLAYSCAPES

SALES BRANCH, CHENY, OHIO  
EAST VILLAGE, IN. 46039  
PHONE: 1-800-767-4422  
FAX: 1-800-767-4422

Equipment Manufacturer



FAST & COMPONENT	RECYCLED PLASTIC	2-COLOR PLASTIC	ECO-ARMOR
Blue	Forest Green	Forest Green	Gray
Green	Blue	Forest Green	Gray
Forest Green	Red	Red	Red







**Legion Park**

Norwood Young America, MN

21-5788A, MID

Sales Representative

**MIDWEST**  
PLAYSCAPES

6515 EAGLE CREEK DRIVE, S.W.  
SHAWNEE, OK 74801  
800-451-7273

Equipment Manufacturer

**PLAYWORLD**  
The world needs play.



**EQUIPMENT SIZE:**  
**24'0" x 43'8" x 17'4"**

**USE ZONE:**  
**See Dwg**

**AREA:**  
**See Dwg**

**FALL HEIGHT:**  
**8 FT.**

**USER CAPACITY:** 61

ADA SCHEDULE				Total Elevated Play Activities: 7	
		Total Ground-Level Play Activities: 7			
	Accessible Elevated Activities	Accessible Ground-Level Activities	Accessible Ground-Level Play Types		
Required	4	2	2		
Provided	6	5	4		

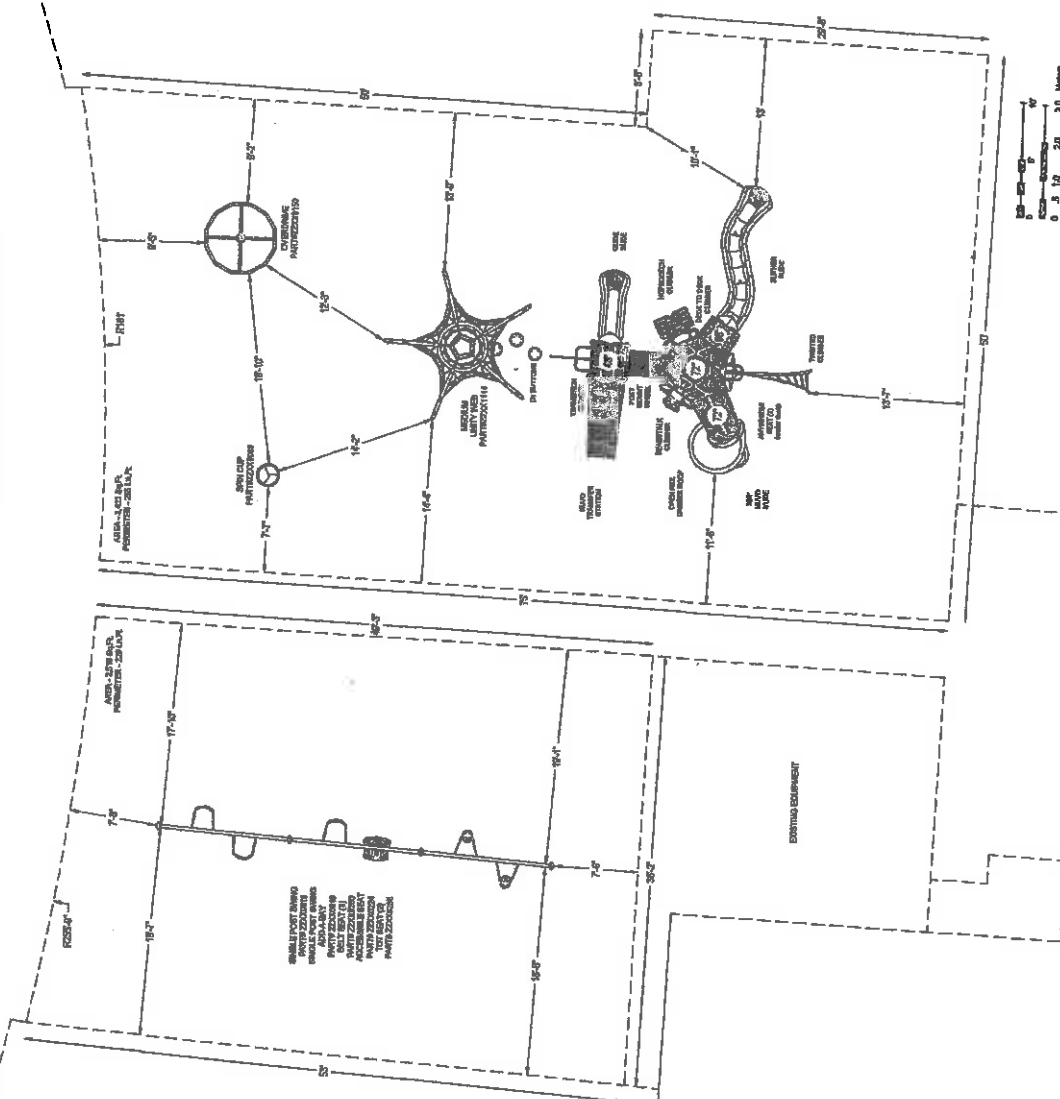
✓ ASTM F1487-17



PROJECT NO: 21-5788A.MID	SCALE: 3/32"=1'-0"
-----------------------------	-----------------------

DRAWN BY: L. BICE	Paper Size
----------------------	------------

DATE 01-JUN-21



**\*PLAYGROUND SUPERVISION REQUIRED**





8632 Eagle Creek Circle, Savage, MN 55378  
www.MIDWESTPLAYSCAPES.com

direct: 952.895.8888  
fax: 952.895.8889  
toll free: 800.747.1452

playscapes@earthlink.net

## Quotation



Project: City of Norwood Young America / Legion Park

Contact: Tony Voigt

Ship To: 310 Elm St W  
NYA, MN 55368

Email: [tvoigt@cityofnya.com](mailto:tvoigt@cityofnya.com)

Shipping Contact Name:

Phone:

Fax:

Bill To: PO Box 59  
NYA, MN 55368

Date: 12/22/2020

Qty	Design/Item #	Description	Total
1	20-4141A	Playworld Commercial Play Equipment per Design #20-4141A Price includes: Playstructure, Denali Net and Net Bridge (List Price \$57,335 / Save \$9,747)	\$ 47,588.00

Tax Exempt # \_\_\_\_\_

\* Please provide certificate

Subtotal \$ 47,588.00

Freight \$ 3,150.00

Sales Tax \$ 3,488.24

Local Sales Tax \$ 253.69

**Total \$ 54,479.93**

### Option

☐ Add \$3,599 for a 3 Bay Swing including seats as shown in Design #20-4141A.

☐ Add \$8,600 for Installation of the Play Equipment only.

NOTE: Customer is responsible for unloading, freight inventory, storage, site prep, removal of existing equipment, excavation, drainage system, safety surfacing and disposal of packaging material.

NOTE: Any Insurance requirements above \$1,000,000 General Liability will be subject to a surcharge

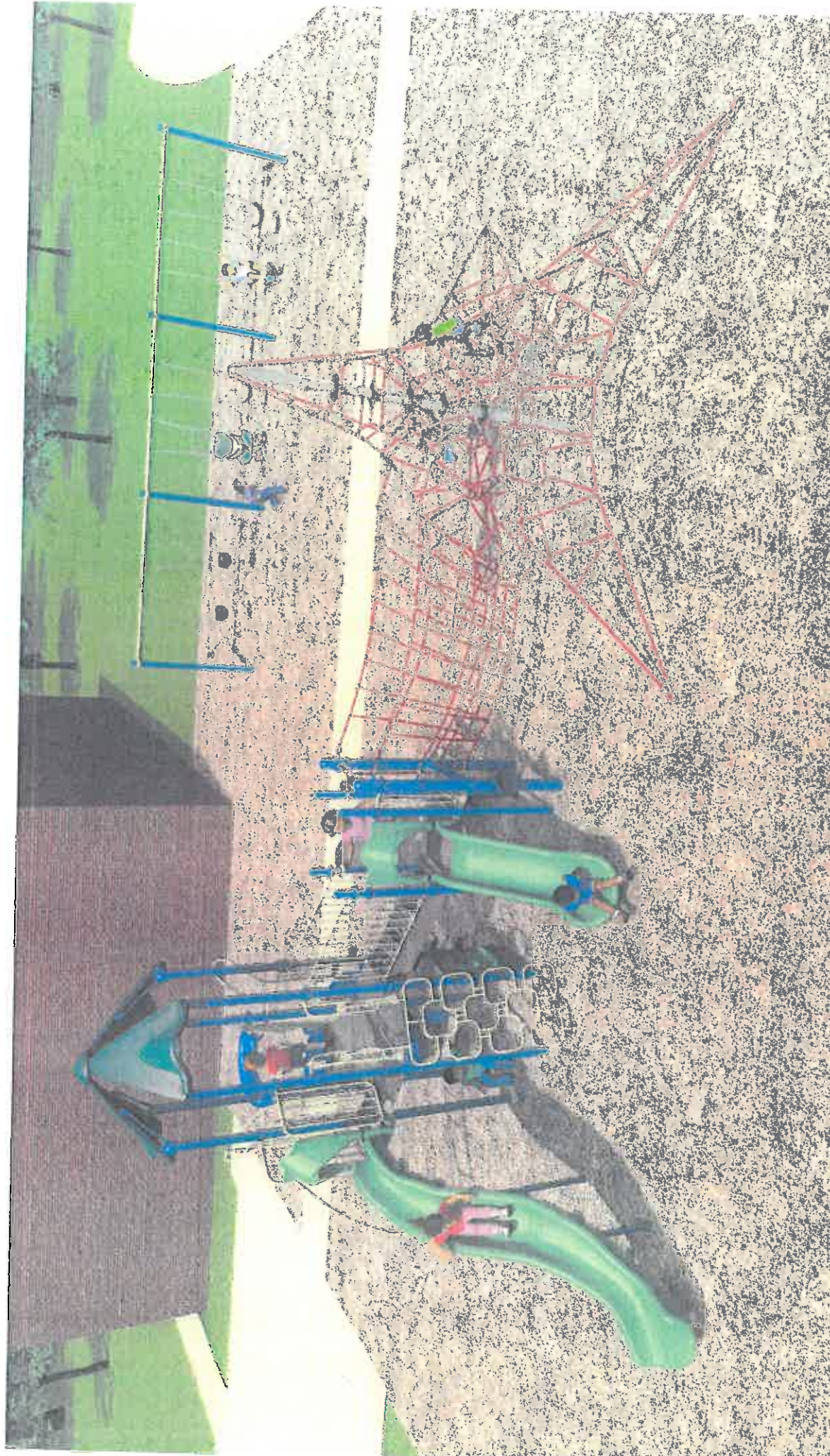
NOTE: UNLESS OTHERWISE NOTED, prices shown are material only. They DO NOT include: assembly, installation, border, safety surfacing, drain tile, geotextile fabric, removal of existing equipment, site preparation, excavation or site restoration, unloading of equipment, disposal of packaging material, storage of equipment, additional insurance and bonding would be extra, unless otherwise stated above. If playground equipment or materials are stored off site, customer is responsible for transporting equipment to job site.

Prices firm for 30 days, subject to review thereafter. Our terms are net 30. A finance charge of 1.5% will be imposed on the outstanding balance unpaid for more than 30 days after the shipment of materials. Equipment shall be invoiced separately from other services and shall be payable in advance of those services and project completion. Retainage not accepted. Once customer has signed quotation, your order cannot be changed or canceled. Please allow 3 to 4 weeks for delivery after receipt of order. Standard manufacturing design, specification, and construction apply unless noted otherwise. Customer is responsible for the identification and marking of all underground utilities (public or private) to include drain tile and sprinkler systems. Area must be accessible to Bobcat and other equipment necessary for installation or additional fees will be charged. Freight quote is based on customer unloading equipment and checking in all equipment for any missing parts. If product is refused by customer upon delivery for any reason (unless damaged), without prior authorization from Midwest Playscapes, Inc., the customer agrees to pay 20% restocking fee plus freight charges. Price does not include prevailing wages, unless otherwise noted. If we can be of Other Assistance, please feel free to contact us.

Signed: \_\_\_\_\_  
Dominic Dvorak

Accepted \_\_\_\_\_  
Date: \_\_\_\_\_  
Printed Name: \_\_\_\_\_





## Legion Park

Norwood Young America, MN

20-4141A

Sales Representative



**MIDWEST**  
PLAYSCAPES

SAVAGE INVESTIGATES

*[Faint handwritten notes]*

Equipment Manufacturer

PLAVIXOPI D

**The world needs play**

OST & CONTINITY POLYMER PLASTIC TECHNOLOGIES

Blue	Forest Green	Forest Green	Grey
Blue	Forest Green	Forest Green	Grey

Forest green  
Blue

[illegible]

054

2  
 3  
 4  
 5  
 6  
 7  
 8  
 9  
 10  
 11  
 12  
 13  
 14  
 15  
 16  
 17  
 18  
 19  
 20  
 21  
 22  
 23  
 24  
 25  
 26  
 27  
 28  
 29  
 30  
 31  
 32  
 33  
 34  
 35  
 36  
 37  
 38  
 39  
 40  
 41  
 42  
 43  
 44  
 45  
 46  
 47  
 48  
 49  
 50  
 51  
 52  
 53  
 54  
 55  
 56  
 57  
 58  
 59  
 60  
 61  
 62  
 63  
 64  
 65  
 66  
 67  
 68  
 69  
 70  
 71  
 72  
 73  
 74  
 75  
 76  
 77  
 78  
 79  
 80  
 81  
 82  
 83  
 84  
 85  
 86  
 87  
 88  
 89  
 90  
 91  
 92  
 93  
 94  
 95  
 96  
 97  
 98  
 99  
 100  
 101  
 102  
 103  
 104  
 105  
 106  
 107  
 108  
 109  
 110  
 111  
 112  
 113  
 114  
 115  
 116  
 117  
 118  
 119  
 120  
 121  
 122  
 123  
 124  
 125  
 126  
 127  
 128  
 129  
 130  
 131  
 132  
 133  
 134  
 135  
 136  
 137  
 138  
 139  
 140  
 141  
 142  
 143  
 144  
 145  
 146  
 147  
 148  
 149  
 150  
 151  
 152  
 153  
 154  
 155  
 156  
 157  
 158  
 159  
 160  
 161  
 162  
 163  
 164  
 165  
 166  
 167  
 168  
 169  
 170  
 171  
 172  
 173  
 174  
 175  
 176  
 177  
 178  
 179  
 180  
 181  
 182  
 183  
 184  
 185  
 186  
 187  
 188  
 189  
 190  
 191  
 192  
 193  
 194  
 195  
 196  
 197  
 198  
 199  
 200  
 201  
 202  
 203  
 204  
 205  
 206  
 207  
 208  
 209  
 210  
 211  
 212  
 213  
 214  
 215  
 216  
 217  
 218  
 219  
 220  
 221  
 222  
 223  
 224  
 225  
 226  
 227  
 228  
 229  
 230  
 231  
 232  
 233  
 234  
 235  
 236  
 237  
 238  
 239  
 240  
 241  
 242  
 243  
 244  
 245  
 246  
 247  
 248  
 249  
 250  
 251  
 252  
 253  
 254  
 255  
 256  
 257  
 258  
 259  
 260  
 261  
 262  
 263  
 264  
 265  
 266  
 267  
 268  
 269  
 270  
 271  
 272  
 273  
 274  
 275  
 276  
 277  
 278  
 279  
 280  
 281  
 282  
 283  
 284  
 285  
 286  
 287  
 288  
 289  
 290  
 291  
 292  
 293  
 294  
 295  
 296  
 297  
 298  
 299  
 300  
 301  
 302  
 303  
 304  
 305  
 306  
 307  
 308  
 309  
 310  
 311  
 312  
 313  
 314  
 315  
 316  
 317  
 318  
 319  
 320  
 321  
 322  
 323  
 324  
 325  
 326  
 327  
 328  
 329  
 330  
 331  
 332  
 333  
 334  
 335  
 336  
 337  
 338  
 339  
 340  
 341  
 342  
 343  
 344  
 345  
 346  
 347  
 348  
 349  
 350  
 351  
 352  
 353  
 354  
 355  
 356  
 357  
 358  
 359  
 360  
 361  
 362  
 363  
 364  
 365  
 366  
 367  
 368  
 369  
 370  
 371  
 372  
 373  
 374  
 375  
 376  
 377  
 378  
 379  
 380  
 381  
 382  
 383  
 384  
 385  
 386  
 387  
 388  
 389  
 390  
 391  
 392  
 393  
 394  
 395  
 396  
 397  
 398  
 399  
 400  
 401  
 402  
 403  
 404  
 405  
 406  
 407  
 408  
 409  
 410  
 411  
 412  
 413  
 414  
 415  
 416  
 417  
 418  
 419  
 420  
 421  
 422  
 423  
 424  
 425  
 426  
 427  
 428  
 429  
 430  
 431  
 432  
 433  
 434  
 435  
 436  
 437  
 438  
 439  
 440  
 441  
 442  
 443  
 444  
 445  
 446  
 447  
 448  
 449  
 450  
 451  
 452  
 453  
 454  
 455  
 456  
 457  
 458  
 459  
 460  
 461  
 462  
 463  
 464  
 465  
 466  
 467  
 468  
 469  
 470  
 471  
 472  
 473  
 474  
 475  
 476  
 477  
 478  
 479  
 480  
 481  
 482  
 483  
 484  
 485  
 486  
 487  
 488  
 489  
 490  
 491  
 492  
 493  
 494  
 495  
 496  
 497  
 498  
 499  
 500  
 501  
 502  
 503  
 504  
 505  
 506  
 507  
 508  
 509  
 510  
 511  
 512  
 513  
 514  
 515  
 516  
 517  
 518  
 519  
 520  
 521  
 522  
 523  
 524  
 525  
 526





**EQUIPMENT SIZE**  
**24'0" x 43'8" x 174"**

**USE ZONE:  
SEE DWG**

AREA:  
**SEE DWG**

PERIMETER:  
**SEE DWG**

**FALL HEIGHT:**  
**8 Ft.**

**USER CAPACITY:** 55

ADA SCHEDULE		Required	4	2	2	Total Elevated Play Activities: 7	
		Provided	6	2	2		Total Ground-Level Play Activities: 5
			Accessible Elevated Activities	Accessible Ground-Level Activities	Accessible Ground-Level Play Types		

✓ **ASTM F1487-17**  
✓ **CPSC #325**



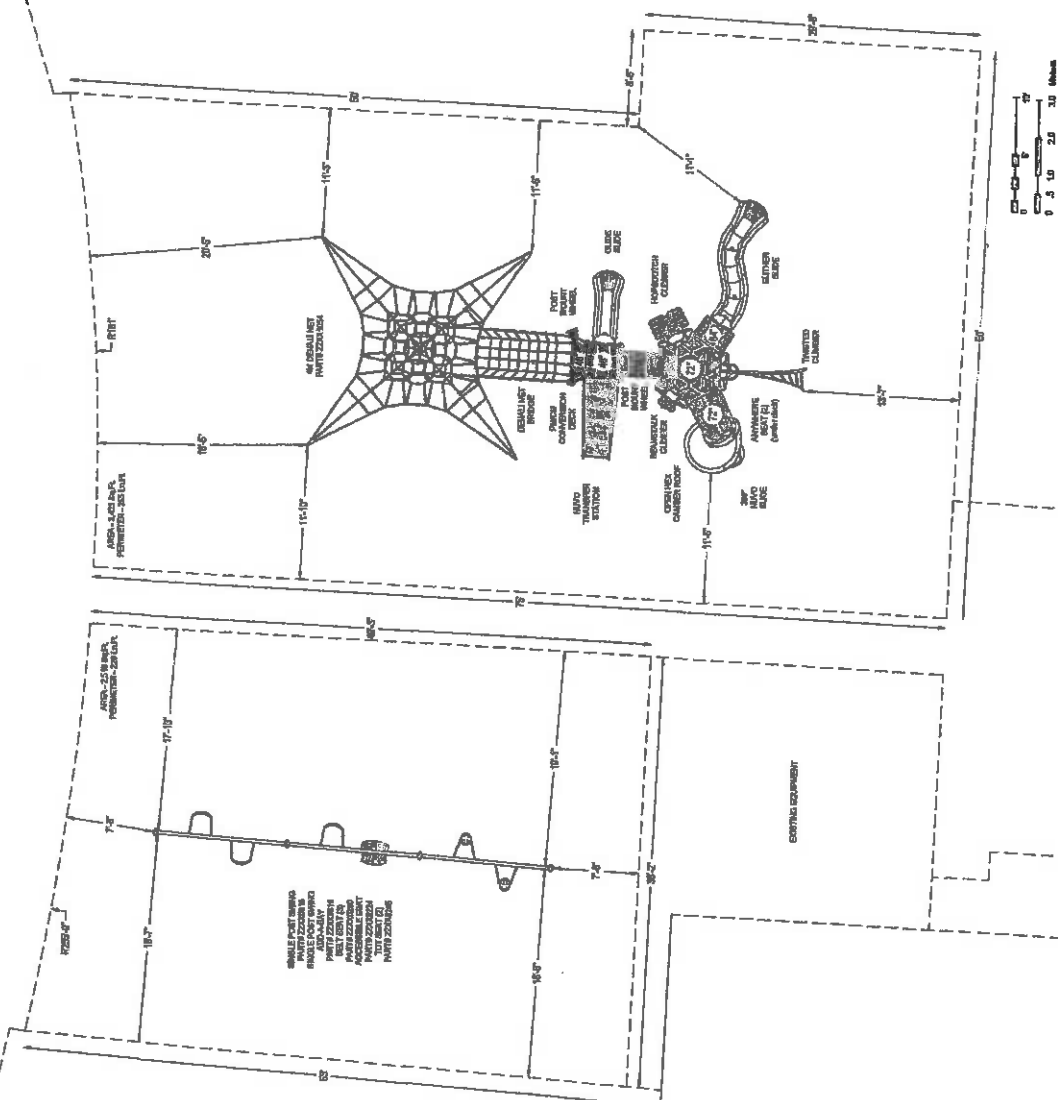
SCALE: 1/32"=1'-0"

PROJECT NO:  
20-4141A

<b>DRAWN BY:</b>	<b>Paper Size</b>
<b>SCALE:</b>	

20

DATE: 17-DEC-2020

**\*PLAYGROUND SUPERVISION REQUIRED**



TO: Parks and Recreation Commission Members

FROM: Tony Voigt, Public Service Director

DATE: August 17, 2021

RE: Replace Trees at Kehrer Park

---

Kehrer Park received extensive elevation and grade changes during the 2020 Hwy 212 project. One of the extensive changes was to the West side of the Park. Paul Lano at 324 Wilson St W had requested the contractor to use excess dirt from the project and build up his entire backyard. To complete this work, the contractor removed 2 trees from Kehrer park to maintain the proper slope from Paul's property into the Park property.

At that time Paul Lano and Administrator Helget had made an agreement to replace the trees when the project was complete. Paul has agreed to replace the 2 removed trees with 2"-3" caliper trees from Waconia Tree Farm.

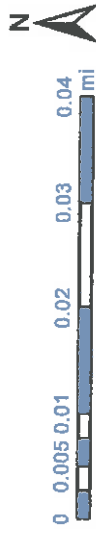
I have included a map with the highlighted area of which the elevation was raised and the trees removed. Please review the map and inspect the area for recommendations to place the new trees. We may pick the tree species of our choice that is available from Waconia Tree Farm. Paul had mentioned Waconia Tree Farm had recommended Maple trees if the City would like to see some fall colors in this Park.

**Suggested Motion: Make a motion to place " (what kind of tree's) " at " (which preferred location) " in Kehrer Park.**

*Norwood Young America*

---







Date: August 17, 2021

To: Members of the Parks and Recreation Commission  
Members of the Senior Advisory Commission

From: Carol Lagergren, Mayor

Re: Indoor Walking Track Partnership

Based on a recent discussion with Tim Schochenmaier, Central Schools Superintendent, the city has an opportunity to partner with the school in an upcoming facility expansion to add an indoor walking track to the project. The ground-level track would be a 150 meter, four lane track with a sports court surface (ideal for running and walking, and accessible to walkers and wheelchairs). The indoor walking track would be available before and after school through an outside entrance and would be free to all citizens. The total cost of the project would be approximately \$830,000 with the total cost paid by the city. Grant opportunities will be researched to fund a portion of the total cost.

Timeline for this project:

- September 2021 - school begins advertising for the bond referendum
- November 2, 2021 - special election to approve bond referendum
- January 2022 - final approval of building design

**Recommendation: Motion to recommend to the City Council to explore the option of partnering with Central Schools to add a walking track to the upcoming facility expansion.**



**Norwood Young America**

310 Elm Street West PO Box 59 - Norwood Young America MN 55368 - (952)467-1800 - [www.cityofnya.com](http://www.cityofnya.com)