

RETAIL / OFFICE FOR LEASE

522 FAXON RD N., NORWOOD YOUNG AMERICA



**BRING YOUR IDEAS!
C-2 ZONING MANY USES!**

Gross Lease Rates*

Building: \$14.00/SF/YR

***Plus Utilities per Meter**

BUILDING INFORMATION

- 3,474 SF Retail Building on Large 1.09 Ac. Lot
- Building Expansion Possible
- 36+ Parking Stalls & Large Monument Sign
- Divisible to 2,489 SF & 985 SF (Former Dental)
- 1980 Masonry Construction / New Roof 2002
- Central Air Conditioning
- Zoned C-2 General Commercial
- Improvement Allowance Available for Qualified Tenants
- **High Profile Location off Hwy 212 in Norwood Young America!**

Co-Agency Listing



Ted LaFave, President

(612) 875-3858

ted@ejlcommercial.com

Justin Stueve, Vice President

(612) 360-8104

justin@copperwoodmn.com

Ted LaFave
612-875-3858

Justin Stueve
612-360-8104

ShowcaseMyBuilding.com

SITE PLAN



Ted LaFave

612-875-3858


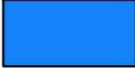


Justin Stueve

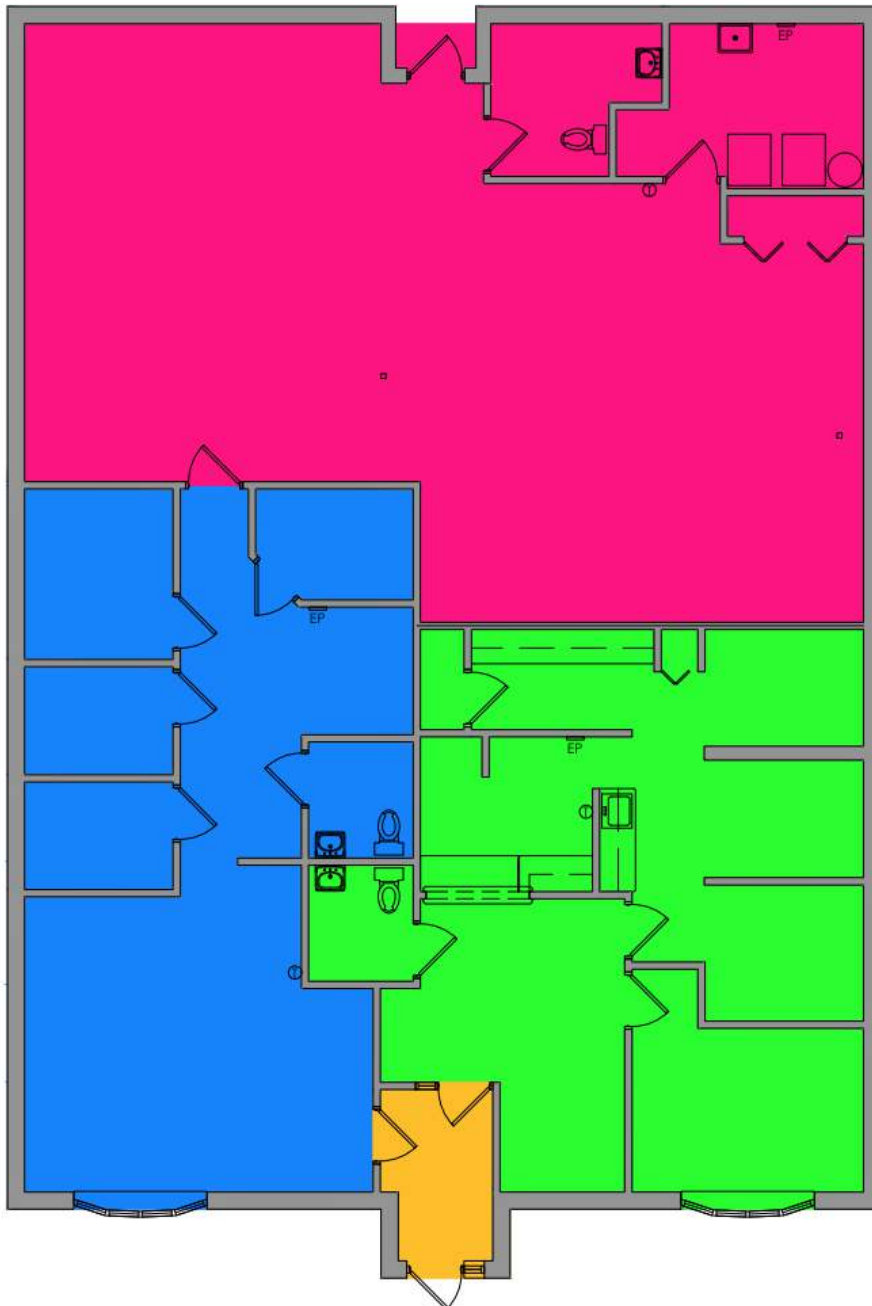
612-360-8104



ShowcaseMyBuilding.com

FLOOR PLANS

-  TENANT 01 (938 GSF / 985 RSF)
-  TENANT 02 (923 GSF / 969 RSF)
-  TENANT 03 (1,520 GSF/ RSF)
-  BUILDING COMMON (84 GSF)



Ted LaFave

 612-875-3858

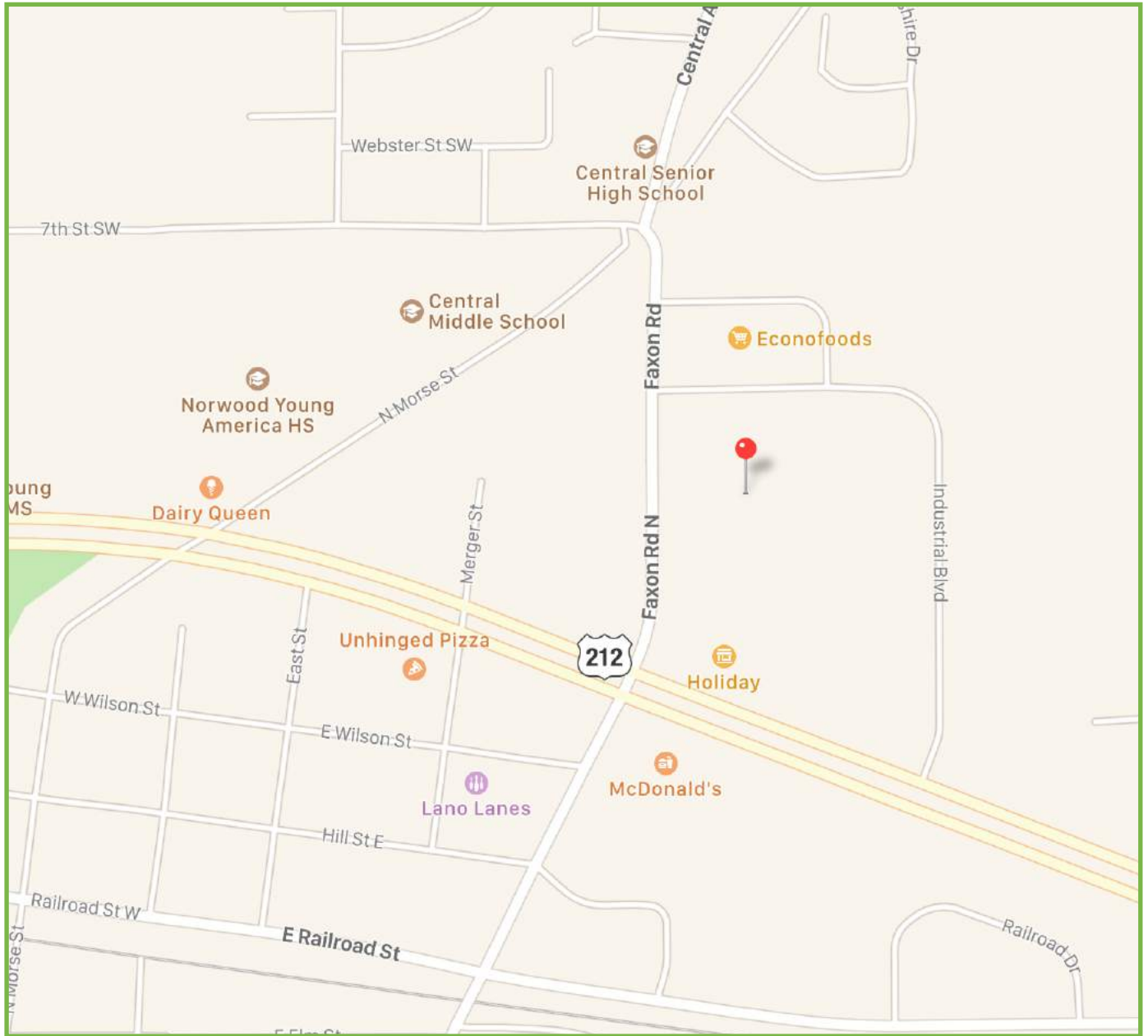
Justin Stueve

 612-360-8104



ShowcaseMyBuilding.com

522 FAXON RD N., NORWOOD YOUNG AMERICA, MINNESOTA



Ted LaFave
612-875-3858

Justin Stueve
612-360-8104

ShowcaseMyBuilding.com